



Junior Gardens  
2000 - 2001



SUNDAY ■ JANUARY 7, 2001

# Homeowner hopes to transform suite into cozy, one-room inn

■ She wants visitors to share her paradise, with its pasture, gazebo and goldfish pond. Hers would be at least the sixth such venture in Citrus.

By JIM ROSS  
Times Staff Writer

FLORAL CITY — Citrus County soon might become home to another bed-and-breakfast inn.

Cathy Foley wants to open a B&B, which she would call the Morning Glory Country Chalet, on a secluded, wooded tract south of County Road 480 near Floral City.

But before Foley can begin accepting guests, she first must obtain a conditional-use permit from the Planning and Development Review Board. The land is zoned rural residential, and the county's Land Development Code requires owners to obtain board permission before they begin such a business.

The board is scheduled to consider Foley's request at its Jan. 18 meeting, which begins at 9 a.m. at the Lecanto Government Building, 3600 W Sovereign Path. The meeting is open to the public.

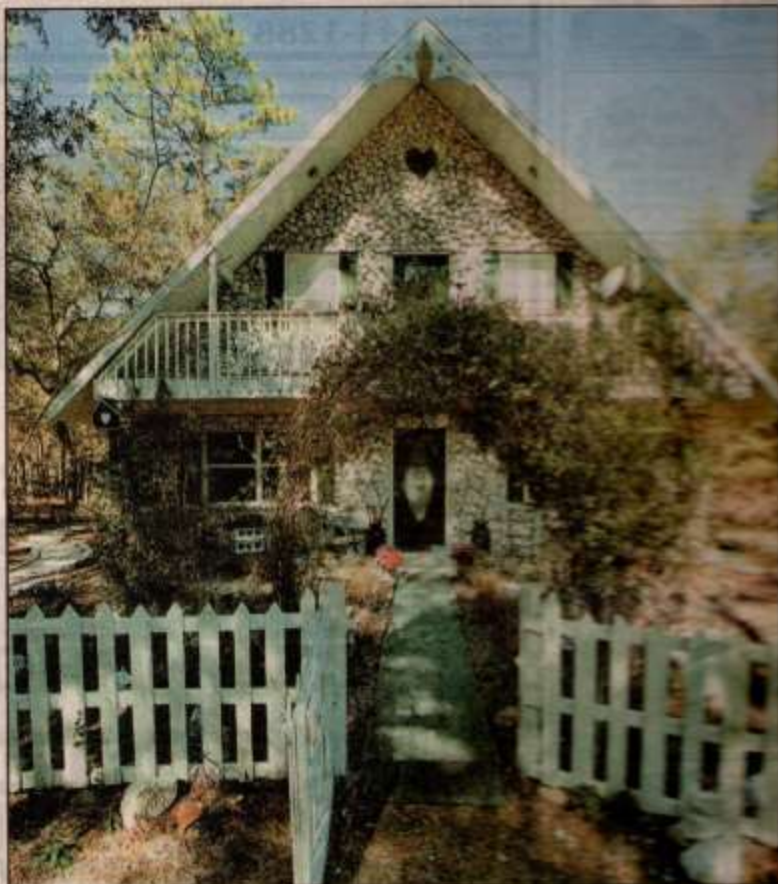
People who own land near Foley's property have been notified of the hearing and will have the opportunity to express their thoughts.

Foley and her husband built the two-story home four years ago. Included in the plans was a cozy, private bedroom and bath that has its own entrance.

This guest suite — the "flower garden room," as Foley calls it — would be the sole room for rent if the B&B comes to be.

"We just love to meet new people, and we wanted to share our surroundings," said Foley of why she wanted to become an innkeeper.

When marketing Citrus to prospective visitors, tourism experts in government and the private sector portray the county as a good place to get away from the big city and tourist traps, hence the



The guest suite, with a private entrance, is on a wooded tract of land south of County Road 480 near Floral City. The land is zoned rural residential, and Cathy Foley must obtain a conditional-use permit before she can accept guests.

slogan "Mother Nature's Theme Park."

Visitors can swim with the manatees during the cold months, of course. They also can bike or skate along the Withlacoochee State Trail, hike in the state forest, browse the antique shops in Inverness, Floral City and Crystal River or tour the old courthouse.

People who enjoy such activities — officially known as ecotourism and heritage tourism — might like the chance to

stay at a bed-and-breakfast inn as opposed to a chain motel.

At least that is what the private sector seems to think. Several years ago, Citrus had no B&Bs. If Morning Glory wins approval, it would become at least the sixth inn of its kind to open in Citrus.

Two of those properties are near Morning Glory: Running Deer Lodge, a

Please see **ENR** Page 17

## MORNING GLORY COUNTRY CHALET



Times photo — STEVE HASEL

Guests at Cathy Foley's Morning Glory Country Chalet bed and breakfast would stay in this guest suite, which includes a bedroom and bath. A bay window overlooks the grounds, complete with a bird sanctuary and butterfly garden.

### Inn from Page 1

B&B, is further west on CR 480; and the Cottage at Shadowbright, which is a single cottage somewhat similar to a B&B, is off Orange Avenue in Floral City.

Morning Glory is off Turner Avenue, south of CR 480.

Oak, pine and dogwood trees cover the property. A goldfish pond is surrounded by flowers during summer, and a gazebo overlooks a hilly pasture.

Foley's pet cow, named Miss Good Cow, stands silent sentry over the grounds, which guests can inspect while walking on stone paths.

The house, which Foley and her husband will continue to occu-

py, has a limestone front and heart shutters.

Antiques, including a 100-year-old cedar chest, adorn the rooms.

The guest suite features a bay window that overlooks the grounds, which also include a bird sanctuary and butterfly garden.

Foley's phone number is 341-0043. She can't open for business yet, but she is keeping her fingers crossed.

She wants her venture to work, of course, but she also wants to share her bit of paradise with visitors.

"It's kind of like a retreat for people," Foley said.

— Jim Ross writes about tourism in Citrus County. Reach him at 860-7302 or by e-mail at [jross@sptimes.com](mailto:jross@sptimes.com).



THURSDAY, JUNE 7, 2001

## Floral City Garden Club



Special to the Chronicle

LEFT: Frances Simpson (left), member of the Floral City Garden Club, was recently honored by the Club for her more than 20 of active service and support. Outgoing president Marie Jones (right) presented her with the coveted "Hall of Fame" pin. The "Hall of Fame" designation is a relatively recent honor established by the Florida Federation of Garden Clubs, Inc. to recognize outstanding contributions made by individual club members.

ABOVE: At the biannual installation of officers luncheon, outgoing president of the Floral City Garden Club, Marie Jones (left), presents a certificate to member Dorothy Clark (right) indicating that the Floral City Garden Club has honored Dorothy by having her name placed in "The Golden Book" at the Florida Federation of Garden Clubs, Inc. in Winter Park.

## Mary Pritchard, 78, Floral City

Mary L. Pritchard, 78, Floral City, died Sunday, Feb. 18, 2001, in Surrey Place of Lecanto.

Born in Smoaks, S.C., on Oct. 23, 1922, to Meric and Nivia Hiers, she came to Florida 22 years ago from Dunkirk, Md. She was a retired elementary school teacher and a member of the Floral City United Methodist Church. She was president of the Floral City Garden Club and was a nationally recognized flower judge.

Surviving are her husband of 57 years, Marion G. Pritchard; son, Marion G. Pritchard Jr., Galway, N.Y.; daughter, Linda P. Green, Edgewater, Md.; sister, Sara Senders, Lockport, N.Y.; three grandchildren, James, Brian and Joanna; and one great-grandchild, Abigail.

Chas E. Davis Funeral Home, Inverness.

SUNDAY  
APRIL 22, 2001

# Community

*Citrus County Chronicle*

## Garden Club gives dirt on fund-raiser

*Special to the Chronicle*

Annually, the Floral City Garden Club hosts a giant plant sale open to the public. This year's sale will be on Saturday morning only, April 28, in front of the Floral City Community Building on Orange Avenue/County Road 48, one block east of the traffic light on U.S. 41.

Club members will be offering a wide mix of homegrown plants and selected nursery-grown plants for landscaping, gardening, patio and indoor use.

The feature plant this year will be the daylily, and 13 different varieties of the daylily, including the Iditarod, Foxfire and Jock Randall, will be avail-

able. These lilies range in color from almost white through pale yellow, deep gold and rusty maroon. The lilies will be offered at \$5 per "fan."

Other specialty plants include a few gingers at \$12 per pot and the home-grown plant: Yesterday, Today and Tomorrow. In addition, a sampling of

the names of the many varieties available include blue hibiscus, dwarf bamboo flowering maple, Jacobenia, Lantana, Loropetalum (Chinese Fringe Flower), ornamental pepper, whirling butterflies and "Cracker" Roses.

For the first time, the club will have homegrown and packaged seed packets

of bloomers. These have been exchanged among members, this year the group offers them to the public.

In addition to the plant sale, the club is sponsoring popular lecturer and master gardener, Chet Olsbewsky from the University of Florida Extension Service. Attendees may view a slide program and hear his discussion of "Pitfalls of Landscaping in Citrus County." Olsbewsky has a wealth of knowledge about what works and does not work here in the county, and he willingly shares this with others.

Coffee, soft drinks and sweet rolls will be available inside the community building throughout the morning.

For more information, call 726-7740.

### SO YOU KNOW

**WHAT:** Floral City Garden Club plant sale.

**WHEN:** Morning of Saturday, April 28.

**WHERE:** In front of the Floral City Community Building, Orange Avenue/County Road 48, one block east of the traffic light on U.S. 41.



May 2001

# Club installs officers

MARCIA BEASLEY  
*Special to the Chronicle*

The 50 members of the Floral City Garden Club met for the last scheduled event of the season. The occasion was the biannual installation luncheon for the incoming president and her board. Installing the new officers was Polly Connell, president of the Crystal River Garden Club, master flower show judge and NCSGC landscape critic.

New officers are: Cathi Ayers, president; Jo Ann Quackenbush, first vice president; Sheila O'Dell, second vice president; Mary Lou Sloop, recording secretary and Kathy Hofmann, treasurer.

As outgoing president, Marie Jones had a few awards to present on behalf of the membership. For the first time in the club's history, two special honors were bestowed on members. Dorothy Clark received a framed certificate indicating that her name had been placed in the "Golden Book" and Frances Simpson received a special pin indicating that her name had been placed in the "Hall of Fame," at the headquarters of the Florida Federation of Garden Clubs Inc. in Winter Park.

A third recognition was made when Marie Jones presented Marcia Beasley with a life membership and Florida Federation of Garden Club life member pin. Only two other



Special to the Chronicle

The Floral City Garden Club recently installed new officers for the 2001-03 administrative period. Shown, from the left, are: Marie Jones, past president; Cathi Ayers, president; Jo Ann Quackenbush, first vice president; Sheila O'Dell, second vice president; Mary Lou Sloop, recording secretary; Kathy Hofmann, treasurer and Laura Hennings, chaplain.

club members have been given life memberships in the Florida Federation of Garden Clubs by the Floral City Garden Club.

These three members were honored by their club for the

more than 60 years (collectively) of continuous, enthusiastic, support to the Floral City Garden Club.

Nine members recently

Please see **FLORAL/Page 10D**

## FLORAL

Continued from **Page 1D**

attended the District V Garden Club meeting in Riverhaven, sponsored by the Riverhaven Garden Club. At that meeting,

the Floral City Garden Club was awarded a large cash prize for obtaining the largest increase in members during the past two-year period. Floral City Garden Club membership continued to grow when, during the installation luncheon a week later, yet

another new member joined. The club welcomes the latest member, Ellen McConnell.

Meetings and programs are on the second Friday of each month from September through May and the club usually meets at 1 p.m. in the Floral City Community Building unless otherwise

announced.

All persons are welcome to attend and to join the club. Call President Cathi Ayers, for more information at 637-6345.

Marcia Beasley reports on the activities of the Floral City Garden Club.











PLANT SALE  
2001  
BATSY NEEL  
PAM BELLMAN  
LYNN BASSETT  
DOROTHY CLARK  
BILLY PATILLO



CRYSTAL RIVER WOMAN'S CLUB  
LITERARY GROUP 2001







# Floral City gardeners get to know each other

**MARCIA BEASLEY**  
*Special to the Chronicle*

A new year, new officers and eight new members since the closing meeting in May are the changes in the Floral City Garden Club.

The new club year will start with the first meeting at 12:30 p.m. Friday in the newly renovated Floral City Community Building, next to the fire station on Orange Avenue/County Road 48.

The officers and committee chairmen met during the summer to plan the program, projects and activities for the year. President Cathi Ayers has a number of changes in store. One is a special way in which club members can get to know new members by providing a

"Big Sister" to each new member.

First Vice President Jo Ann Quackenbush has been typesetting the club's yearbook, and has added photos of each member to the book, again in the spirit of "getting to know you." The club has grown so rapidly in the past year that this addition to the yearbook should be helpful.

Second Vice President Sheila O'Dell has been carrying out the plans of the board by completing the details for all the meetings and programs. This includes many meetings at club members' homes to see firsthand what grows in this area of Florida and to learn how to grow and landscape here.

Mary Lou Sloop and Janis

Lehowitz will share the office of recording secretary, while Kathy Hofmann will make deposits, pay the bills and track the budget as treasurer of the club.

At this meeting, members and visitors will be greeted by Terry Newberry, Dorothy Sherman and immediate past president Marie Jones.

Refreshments will be provided by Terry Newberry and Carol Hart.

The focus will be "Getting to know you" — a chance for old members to get reacquainted and for new members to be introduced by their "Big Sisters."

Not only will the club be "getting to know each other," but they will be "getting to know the club" as committee

chairmen present an overview of the responsibilities of and the work planned for their committees.

In addition to presenting activity, the meeting will provide new members with information as they decide about the areas of club work in which they would like to be most actively involved.

It also will provide the new members with an overview of the mission of garden clubs affiliated with the Florida Federation of Garden Clubs and the National Council of Garden Clubs.

Nomination plans for the club's own "Yard of the Year Awards" will be made and a "Grow and Share" table will be available, where members and guests may bring cuttings,

seeds and bulbs of plants they have grown in their own gardens over the summer.

In three weeks, the club will begin its 13th year in the Citrus County Adopt-A-Highway Program. The Floral City Garden Club was the first garden club in the county to join the program when it was initiated in 1989 by Gerald Clark, then director of public works. Since then, the club has picked up trash on the roadside of a two-mile strip of County Road 48 four times a year. Volunteers (not limited to club members) will meet at 8 a.m. Thursday, Sept. 27 in front of the community building. Bags, vests, gloves and a limited number of picks will be provided.

Although old in organization — founded in 1956 — the club

■ **WHAT:** Floral City Garden Club meeting.

■ **WHEN:** 12:30 p.m. Friday.

■ **WHERE:** Floral City Community Building, next to the fire station on Orange Avenue/County Road 48.

■ **GET INFO:** Call President Cathi Ayers at 637-6345 or Membership Chairman Jo Ann Quackenbush at 344-4447.

is young in spirit and enthusiasm. The club welcomes others to visit and join at any of the meetings. For additional information, call President Cathi Ayers at 637-6345 or Membership Chairman Jo Ann Quackenbush at 344-4447.



FRIDAY  
SEPTEMBER 21, 2001  
[www.chronicleonline.com](http://www.chronicleonline.com)

## Gardeners meeting

MARCIA BEASLEY  
*Special to the Chronicle*

The Floral City Garden Club canceled its meeting of Sept. 14 in respect for the Day of Prayer.

The club will meet at 12:30 p.m. today in Hilton Hall at the Floral City United Methodist Church on Marvin Street, directly across from Floral City Elementary School. Park on the grass parking lot, east (left) of Hilton Fellowship Hall.

Club members will receive the new yearbook at this meeting. The membership directory has been updated with photographs, a birthday calendar, a library book list, monthly gardening guidelines and the monthly program schedule.

A "Grow and Share Table" will be available. It will be loaded with plenty of plants, seeds and cuttings from members' gardens. Members are asked to jot down a bit of information about how you grew the plants so that others, unfamiliar with the plant, can learn how to care for it. This will complete the growing and sharing of plants.

For further information, call President Cathi Ayers at 341-0546.

VISIT FRANCES SIMPSON  
55th of Sept 01  
NURSING HOME



# Floral City group maps action plan

MICHAEL TERRY  
Chronicle

In an attempt to preserve Floral City's historic appeal while continuing to improve the quality of life, community residents have developed an action plan they hope will be used to guide growth for years to come.

Marcia Beasley, chairwoman of the Floral City Heritage Council, said after a meeting with County Commissioner Jim Fowler in March, a group of citizens took his words to heart about developing a list of actions to guide Floral City into the future.

Beasley said the plan the group developed during the past three months includes things many people in the community have been talking about for years, but for one reason or another, consensus was never reached.

"Being able to put this down in a format helps us to solidify everything and move us onto the next stages," she said, noting many of the ideas came from the a "Under The Oaks ... People In Action" (UTOPIA) workshop conducted in 1999.

Beasley said she had written a letter to Fowler, who represents their district, informing him about the plans and ways of getting them accomplished.

Beasley said when Fowler approached residents and asked them to deliver a dream list for



Jim Fowler is credited by members of the Floral City Heritage Council for inspiring them to create a vision for their community.

Please see UTOPIA/Page 4A

## UTOPIA

Continued from Page 1A

Floral City they all saw it as a golden opportunity to get the county involved.

"It's an opportunity for us to approach the subject with the county so that we can work with the county on all these things," she said, noting that any grant applications or funding needed to make their dreams a reality would have to be done through the county

since Floral City is an unincorporated community.

Beasley said the next step is to take the list, which will be in survey form, around to every property owner in historic Floral City, seeking their input. She hopes to do that in the next few weeks.

"I think this is a real significant next step that we are going to be doing," she said. "This survey will allow us to see what things people like and don't like so we can come to a consensus, which is our goal."

### A partial list of aspirations members of UTOPIA have for Floral City:

- Convince officials at the Florida Department of Transportation to work with residents on an alternative to the design they've chosen for a four-lane highway with a median, turn-lane, sidewalks and bike path at the intersection of U.S. 41 and Orange Avenue.
  - Apply traffic slowing devices to reduce speed, with pavement width not to exceed two lanes with a turn lane at the intersection
  - Install antique-looking traffic control lights at the U.S. 41 and Orange Avenue intersection.
  - Restore and enhance Orange Avenue by establishing a linear park by ordinance from Bedford Road to the Duval Island Boat Ramp and the full length of Aroostook Way to the historic steamboat landing.
  - Restrict parking to two handicap-accessible parking spaces at the end of Aroostook Way and placing a sign directing additional traffic to a new parking lot for the Duval Island Boat Ramp.
  - Remove the boat dock access and rebuild the historic fishing pier at the end of Aroostook Way.
  - Replace missing oak trees between Bedford Road to the Duval Island Boat Ramp.
  - Install antique-looking lamps along both sides of Orange Avenue.
  - Place antique-looking benches in appropriate locations along the linear parkway.
  - Restrict the parking of semi-trucks and trailers within the area of the linear park and restricting the stopping or parking of any vehicles along the county right-of-way in the area.
  - Develop a local historic district by ordinance, which would extend from Washington Lane south to Walnut Lane and from Duval Island west to Bedford Road.
  - Work with property owners to evaluate and rehabilitate the vacant historic houses, building and other non-historic buildings, which can be rehabilitated in historic Floral City.
  - Develop funding sources for housing and building rehabilitation.
  - Establish a town center where all residents of Floral City could gather. Purchase the property south of the fire station, library and Masonic Hall for use as the community and public parking area and look into the addition of a pavilion or another recreation element for the area.
- Funding Sources:**
- Create a Municipal Service Benefit Unit (MSBU) for Historic Floral City for lighting, tree planting, signage, gateway, business facade and a parking lot. A MSBU is a specified amount of money annually assessed on property owners in a specific geographical area and paid to the county for use only in the MSBU area.
  - Explore the development of a Community Redevelopment agency for Historic Floral City.
  - Explore the establishment of Floral City as a Front Porch Florida community.
  - Explore the use of Community Facilities loans and grants through the Rural Housing Service, Department of Agriculture.
  - Explore the use of Florida Land Trust to purchase adjacent lands at the historic Steamboat landing and to reconstruct the old fishing pier at the end of Aroostook Way.

June 5, 2001

# Club 'goes out of its gourds' for Oct. 12

MARCIA BEASLEY  
*Special to the Chronicle*

**G**ourds and gourds and more gourds! Gourds for utilitarian use and gourds for decorating. Gourds for your garden and gourds for your birds.

"Gourds — Their Uses and Growing Habits" will be the program presented at this Friday's meeting of the Floral City Garden Club by Amanda Mullen. Mullen is a native of Floral City and now resides at the historic home where she was born. Following in her mother's footsteps, she has a love and aptitude for cultivat-

ing plants and flowers, which is evident by the old-fashioned flower gardens in her yard on Orange Avenue in Floral City. Mullen is, also, a Master Gardener.

Although modest about her work, Mullen is an accomplished artist who is well known for her decorative painting and gourds are one of many items on which she displays her talent. Examples of her work will be on display at the meeting along with a variety of gourds which can be grown locally.

The Friday meeting and program will be at the home of Eunice Duma, 9828 E. Tahoe

Drive, Inverness. Directions are in the Year Book. Members and guests will be welcomed at 12:30 p.m. by Terry Newberry, Cheri Boggs and Maureen Thieryung. Members, Lawana Bain and Jeanie Tripp will host the "welcome social" with refreshments before the meeting is called to order at 1 p.m.

The club continues to grow, and Frank and Phyllis Peters, new members since the September meeting, will be introduced. The club now has 61 members.

There will be a "Grow and Share" table at the meeting. Members are asked to furnish the name of the plant and its

growth habits for all the cuttings, bulbs, seeds or starts that they bring to share.

Interesting garden items will be given away at the monthly drawing and also at the meeting, a short skit pertaining to parliamentary procedures will be presented.

Visitors and potential members are always welcome. For more information about the club or this meeting, call President Cathi Ayers at 637-6345.

*Marcia Beasley reports news of interest for the Floral City Garden Club.*







OCT 2001 YARD OF YEAR SEARCH

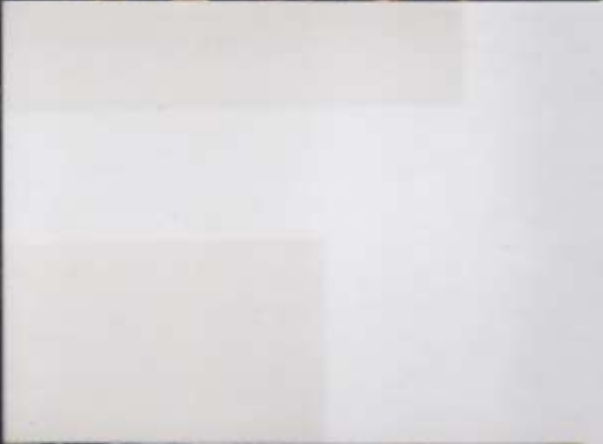




YOY  
AWARDS 2001













# Decorating For Christmas 2001

## Giant Christmas cards



Jan Witherspoon/Chronicle

Floral City's Heritage Day heralded the Christmas holiday season with giant, handpainted Christmas cards placed in Orange Avenue yards. Pictured are Cathi Ayers and Barry Pendry, owners of The Cottage at Shadowbright in Floral City. The postcard was painted by artist JoAnne Quackenbush and is displayed in the front yard of Barbara Milliken's home. The cards are sponsored by the Floral City Garden Club.











XMAS PARTY

President →



2001





Heritage  
Days  
2001



Crazy Hat Party



Cathy  
Foley's  
House



2001





## Floral City Garden Club hosts sale

Floral City Garden Club announces its 7th Annual Giant Plant Sale from 9 a.m. to 1 p.m. on Saturday, March 25, at the Floral City Community Building on County Road 48/Orange Avenue next to the fire station.

In addition to the wide selection of nursery-grown and home-grown landscape, patio and bedding plants, the garden club will offer two gardening programs without charge to the public.

Jim Smith of Old South Nursery in Weirsdale will present a program on the Camellia plants for which his nursery is well known.

Chet Oleshewsky of the Citrus County Extension Office, University of Florida, will present a slide program on Helpful Hints for New Florida Gardeners including pitfalls of Florida landscaping.

A continental breakfast and barbecue luncheon will be available. Also, the Floral City Beautification Committee will host a yard sale, with revenue going to enhance downtown Floral City.

For additional information, please call Lynn at 341-0064.

2001

# Gardeners digging into the holidays

## Floral City club sees busy month ahead

*Special to the Chronicle*

Maureen Thieryung will host the Friday meeting of the Floral City Garden Club at her home, 9300 E. Ferris Court on Duval Island in Floral City.

Car-pooling from the community building parking lot or from the Duval Island Boat Ramp new parking lot is suggested.

Thieryung, Terry Newberry and Barbara Milliken will greet members and visitors. A social gathering will begin at 12:30 p.m., sponsored by hostesses Debbie Barney and Joan Knippen. The business meeting will be called to order by President Cathi Ayers at 1 p.m.

After a brief recess, the program will

begin at 2 p.m. Marie Witt of the Crystal River Orchid Supply House, who many will remember from a presentation she gave at a previous annual plant Sale, will share her successes with growing orchids.

She will welcome members' questions about orchids.

The monthly Horticulture Question and Answer and Grow and Share will follow the program.

Members may bring cuttings, starts, seeds, tubers and bulbs to share free of charge with others.

They will provide information about the care and growth patterns of the plants they bring.

Other plans this month:

A spruce-up on the State Trail at the Jenrette Gazebo Site will start at 8:30 a.m. Saturday. Members attending will each weed and lay mulch around one tree or plant in preparation of Floral City Heritage Days, Nov. 30 and Dec. 1.

The Second Annual Boat Flotilla for viewing wildflowers along the Orange

State Canal, Withlacoochee River, Leslie Canal and across the Floral City Pool of the Tsala Apopka Lake will take place at 10:30 a.m. Friday, Nov. 16.

Assembly will take place at the Duval Island Boat Ramp new parking lot at 10 a.m. More than 54 people and seven boats have signed up. Each participant is asked to offer the captain \$3 and to bring their own bag lunch and drink. Ice and coolers will be furnished. Wearing sun block and a hat is highly advised.

Garden club members will decorate the downtown area, at the Jenrette Gazebo Site and the century old oak trees along Orange Avenue, for the holidays at 8:30 a.m. Nov. 26, if it is warm and at 9:30 a.m. if it is cold. Decorations have been made, but help is needed to place them.

The club will host an old-fashioned cakewalk in the Community Memorial Garden during Floral City Heritage Days on Saturday, Dec. 1.

A work session will take place at 9

■ **WHAT:** Floral City Garden Club meeting.

■ **WHEN:** 12:30 p.m. Friday.

■ **WHERE:** At the home of Maureen Thieryung, 9300 E. Ferris Court on Duval Island in Floral City.

■ **GET INFO:** Call President Cathi Ayers at 637-6345 or First Vice President and Membership Chairman Jo Ann Quackenbush at 344-4447.

a.m. Friday, Nov. 30, in the garden for the event. The garden is between the library and the Masonic Lodge at the corner of Orange Avenue/County Road 48 and Old Floral City Road.

New residents and visitors are welcome to all club meetings and activities.

For further information, call President Cathi Ayers at 637-6345 or First Vice President and Membership Chairman Jo Ann Quackenbush at 344-4447.

# Floral City Garden Club Officers

## Menu

[Welcome](#)

[Officers & Committees](#)

[Calendar](#)

[Goals](#)

[Projects](#)

[Photos](#)

[Wildflowers of Citrus County](#)

[Favorite Links](#)

[Contact Us](#)



the Installation Banquet, Past President Marie Jones passes the gavel to C

- **President.....Cathi Ayers**
- **1st Vice President.....Jo Ann Quacke**
- **2nd Vice President.....Sheila O'Dell**
- **Recording/Corresponding Secretary.....Mary Lu Sloop**
- **Treasurer.....Kathy Hofma**
- **Chaplain.....Larua Hennir**

## Committees:

	<b>Committee:</b>	<b>Chairman &amp; Co-Chair:</b>
	<b>Awards:</b>	<b>Patsy Neel</b>
	<b>Birds &amp; Butterfly Gardening</b>	<b>Barbara Milliken &amp; Cathy Foley</b>
	<b>Civic &amp; Community Development</b>	<b>Terry Newberry</b>
	<b>Historian</b>	<b>Lawana Bain</b>
	<b>Horticulture</b>	<b>Lynn Bassett &amp; Dorothy Clark</b>

April 2001 Meeting @ home of Joan Knippen



Members enjoyed meeting at the home of Joan Knippen for the April 2001 Meeting.  
Top: Janis Lehowicz, Alice Reed, Betty Sumner and Peggy Patillo  
Bottom: Jo Ann Quackenbush, Janis Lehowicz, Pres. Marie Jones and Cathi Ayers.



jo  
To: Cathi Ayers  
Subject: December Meeting Topics



### Pontoon Flotilla

We finally made it ... the Pontoon Flotilla, now dubbed "Pontilla" by Lynn Bassett, was a huge success despite the fact that there weren't nearly as many flowers blooming as the last time. We had 21 members and 21 guests for a total of 42. We had a little notoriety in the Chronicle ... luckily Terry Witt called me to find out if we were really going to have the locks opened in opposition to the Withlapopka Civic Association. Some of them were planning to stage a protest demonstration. We decided to maintain our friendly associations in the neighborhood and stay in the lakes and canal up to the lock. I'm routing some of the pictures taken by Wayne Duma and H.D. Bassett along with the newspaper article. They did a great job, but unfortunately I had to crop them down to fit on the paper and on the website. Next year, if the water cooperates, we would like to tour the river.

FIELD TRIPS included a pontoon boat flotilla on the Lake and canals of Tsala Apopka

## PONTOON BOAT RIDE 2001

# Club scuttles plan to control structure

TERRY WITT  
terrywitt@chronicleonline.com  
*Chronicle*

Floral City Garden Club members have cancelled plans for a wildflower expedition on the Withlacoochee River on Friday to avoid angering their neighbors.

The club had received permission from the Southwest Florida Water Management District, or Swiftmud, to

take a flotilla of boats through a gate separating the lake from the Tsala Apopka Inland Waterway from the river.

Opening the floodgate, even for a short period, would have allowed water to flow through the system, an idea that was opposed by residents of Withlapopka.

Withlapopka residents expressed any objections with Swiftmud in response, club members

Joann Quackenbush. "We may make the river tour next year."

The Floral City pool was largely depleted of water until rain from Tropical Storm Gabrielle flooded the Withlacoochee River in mid-September.

Swiftmud diverted excess water from the river into the Floral City pool. The lake and adjoining man-

Please see TOUR/Page 5A

## TOUR

Continued from Page 1A

made canals in Withlapopka Isles quickly filled with water.

However, dry weather conditions in late October and early November have dropped that lake by a foot since it peaked at 40.89 feet on Oct. 1.

The Inverness pool water level rose somewhat from the September storm. The Hernando pool, however, saw only marginal improvement in the water level.

After three years of drought,

the idea of losing some of their water to a wildflower expedition hit a nerve with Marcia Gallagher, president of the Withlapopka Isles Association, and others in her neighborhood.

"I had one lady say she was going to stand on the bridge when they came through with their boats, and I said, 'No, no, don't do that,'" Gallagher said.

Quackenbush said the club never thought about Friday's expedition as being controversial, nor did Dale Ravencraft, operations director for Swiftmud.

Ravencraft agreed to open

the flood control structure for the club.

He said the floodgate would have been closed as soon as the boats passed through, and reopened again when the flotilla headed back home from the wildflower expedition.

"It would have been a couple hundred thousand gallons at most that would have flowed out, as opposed to billions of gallons in the lake, but that's great news if they've decided not to do it," he said.


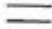
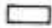

"They're responding to the concerns of neighbors."

# FLORAL CITY POOL

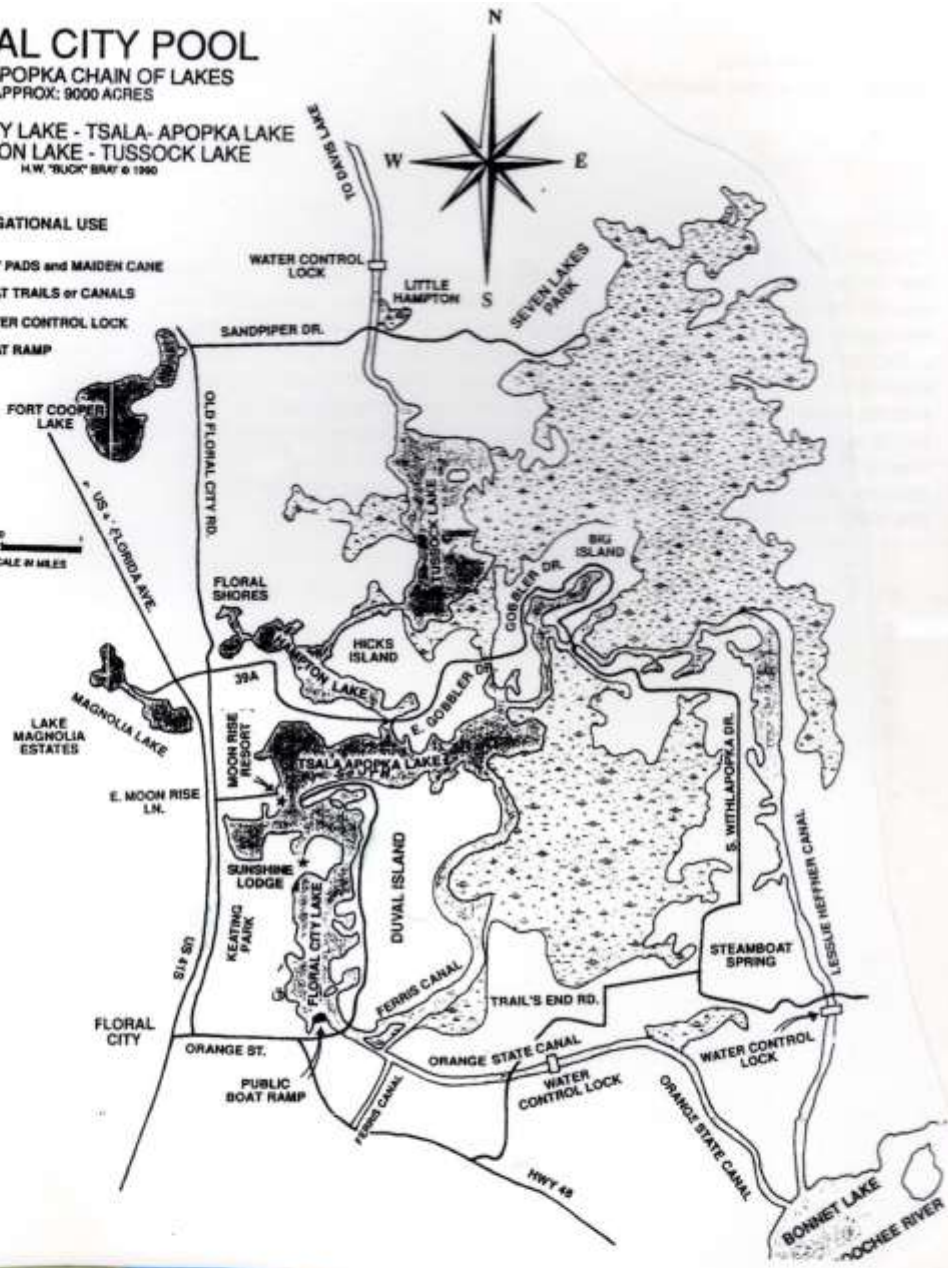
TSALA - APOPKA CHAIN OF LAKES  
APPROX: 9000 ACRES

FLORAL CITY LAKE - TSALA - APOPKA LAKE  
HAMPTON LAKE - TUSSOCK LAKE  
H.W. "BUCK" BRW © 1990

NOT FOR NAVIGATIONAL USE

-  LILY PADS and MAIDEN CANE
-  BOAT TRAILS or CANALS
-  WATER CONTROL LOCK
-  BOAT RAMP

12 6 0  
APPROX. SCALE IN MILES









**From:** Andrea Fuller [andreamiraclelady@earthlink.net]  
**Sent:** Saturday, November 17, 2001 6:00 PM  
**To:** jo  
**Subject:** Floatilla

Dear JoAnn, Fabulous, Great, Fun, Wonderful. Thank you so much for taking us on such a neat outing. It was really a treat. Everyone thought it was such an enjoyable time. I owe you one. Hugs, Andrea

<http://www.fleppc.org/01list.htm>

--- Andrea Fuller  
--- [andreamiraclelady@earthlink.net](mailto:andreamiraclelady@earthlink.net)  
--- EarthLink: It's your Internet.

Dec 2001  
Christmas  
party











*Business Meeting  
March 2002*



Some meetings were held at the home of members. Here members meet at the rural home of member Cathy Foley to hear a program presented by Sue Ellen, President of Inverness Garden Club.





Trail Work





Cleaning up the Trail  
in preparation for the  
dedication of the kiosk:  
an interpretive history  
"Floral City's Travelers  
and Their Trails".





The Junior Gardeners Program continued this year with fourth graders at the Floral City Elementary School. Chairman, Dorothy Clark was assisted by Cathi Ayers and Kathy Hofmann, top left photo.

One of the program involved Certified Arborslist, Michael Harnden, demonstrating the proper tree planting methods as a Crepe Myrtle is planted on school property.

*Junior  
Gardeners*

# Hometown Citrus

NEWS BY AND ABOUT YOU ♦ PUBLISHED EVERY SUNDAY & WEDNESDAY

Field trips were part of the program during 2002. Here members visit the Hillsborough State Park where member Laura Hennings is a ranger.



Special to the Times

## Garden club on the go

On April 12, 37 members of the Floral City Garden Club and eight guests visited a native plant nursery and the Hillsborough State Park for a field trip on native plants. A few of the participants are shown with Park Ranger Laura Hennings. Shown left to right are Alice Reed, Millie Lyons, Betty Welte, Doreen Noon, Betty Summer, Cathy Foley, Janis Lehowicz, Cathi Ayers, Marcia Beasley, Mary Lu Sloop, Minnie Minnis, Jo Ann Quackenbush, Barbara Milliken, and Park Ranger Hennings.



## Butterfly Garden

Butterfly Chairman, Cathy Foley initiated a Butterfly/Wildflower Garden on the Withlacoochee Trail State Park, South side of Orange Avenue. The bird feeder placed at the site was made by Bernie Hofmann member and treasurer Kathy Hofmann's husband and one of our many "Gardening Angels."



*Scholarship  
Award*



Scholarships of \$500.00 each were initiated in Sept. 2001. First award was presented to John Korycji, Jr. by Pres. Cathi Ayers. Also, present in bottom photo left to right are Dorothy Sherman and right Marie Jones, Members of the Community Garden Committee on which John maintained for four years. In 2002 an award was presented to Sara Lee by Pres. Cathi Ayers and far right, Treas. Kathy Hofmann.



*Bus Trip*  
*2002*



# MEMORIAL GARDEN 2002







# Certificate of Appreciation

*This Award is Presented to*

*Floral City Garden Club*

*In Appreciation of Service*

*for Membership Increase*

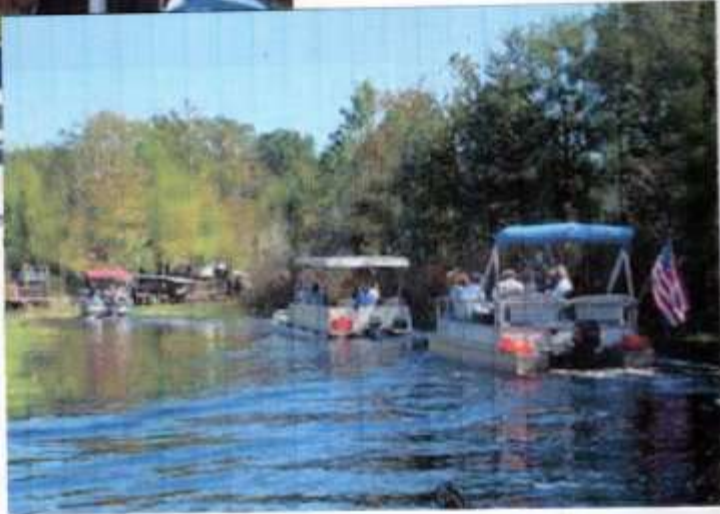
*from 1999-2001*

*Given at District Spring this 10<sup>th</sup> day of May*  
*in the year 2001.*

*Andrea Fuller*  
Secretary

## **Floral City Garden Club to meet Sept. 8**

The first meeting in the fall of the Floral City Garden Club will take place on Friday, Sept. 8. The club will meet at the Floral City Community Building parking lot at 9 a.m. and then car pool to Pine Ridge. There, they will visit the home of Lenny Altavilla to see and hear about his ginger gardens. From there they will go to lunch, Dutch treat. There will not be a regular business meeting.





March 1, 2001

Dear Fellow Garden Clubbers -

*The Floral City Garden Club is hard at work preparing for our Standard Home Flower Show with Afternoon Tea, Garden Fair and music. We expect this to be a fun and festive show and hope that some of you will travel to Floral City to join us.*

*A tour of the historic Jont Knight home is a treat in itself and our club members are having a grand time planning their designs to reflect the ambiance and history of the home. In addition, a variety of nature-related arts and crafts vendors, as well as some antique dealers, have committed for the Garden Fair. Tea and home-made pastries are included for the \$5 admission. If the weather cooperates for us, it should be a delightful week-end outing.*

*Please share the enclosed flyer information with your club members. If there are questions about the show or how to find it, please feel free to call me.*

*Sincerely,*

*Cathi Ayers  
1st Vice-President and  
Flower Show Co-Chair  
352-341-0546*

## Peeking at teapots



*Special to the Chronicle*

Committee members for the Floral City Garden Club's Standard Historic Home Flower Show, Garden Fair and Afternoon Tea with Music look over a selection of teapots for the event, "A Peek at Floral City's Past" that will take place from 1 to 4 p.m. on March 24 and 25 at the Historic Jont Knight House. Members, from the left, are: Patty Barber, clerks chairman; Cathi Ayers, show co-chairman; Lynn Bassett, horticulture consultant; Patsy Neel, show co-chairman; Dorothy Sherman, design entries chairman; and Dorothy Clark, horticulture entries chairman.

National Council of State Garden Clubs, Inc.

"A Peek at our Past" FLOWER SHOW

Date March 24, 2001

DIVISION II SECTION ---

CLASS No. I ENTRY No. #12

"Cooking up a taste of our Past"  
BOTANICAL OR DESIGN CLASS NAME

EXHIBITOR Cathi Ayers

CLUB Floral City Garden Club

1st 2nd 3rd Honorable  
Mention

## Cooking Up a Taste of Our Past

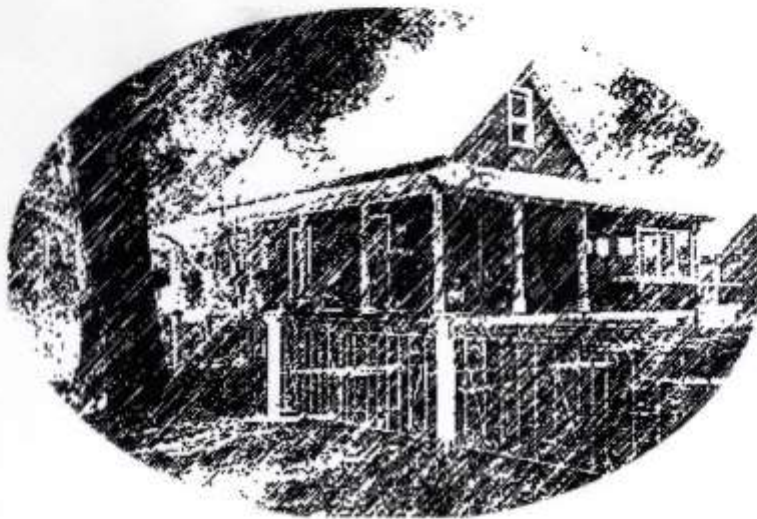
Plant Material: Sweet Potato Vine, Sword Fern, Fig Vine, Daisies, Carnations, Mums

In the turn-of-the-century kitchen, canning jars served many purposes - from "putting up" the garden harvest to starting a sweet potato vine; from holding cooking utensils to providing a vase for a bouquet of freshly cut flowers.

# "A PEEK AT OUR PAST"



## A Standard Home Flower Show



With Garden Fair, Music & Afternoon Tea

{Featuring the work of local artists and craftsmen}

March 24 = 25 {Sat & Sun}

1:00 PM = 4:00 PM

At the Historic Jont Knight Home

Admission \$5.00

8219 E Orange Avenue

Floral City, Florida

US 41



by the Floral City Garden Club

# Craft Persons - Garden Fair

March 24 & 25



1. Joanne Quackenbush: slate painting
2. Dollie Bair: clay pot figurines 727-857-0705
3. George Bair: bird & squirrel feeders
4. Laura Hennings: nature rubbings 637-4203
5. Janet Thompson: quilted pillows 527-9141
6. Bertie Eickler: flower crafts, stepping stones 344-8487
7. Joan Whitacker: pine needle weaving 344-1854
8. Swede Swenson: bird feeder houses, donkey carts 726-7957
9. Jeff Hayes: wooden trellis 344-3794
10. Polly Bernard: primitive oils 726-4230
11. Amanda Mullins: gourds 726-2249
12. Joan Knippen: painted glass & pots, pillows, dishes 637-2975
13. Floral City Heritage Council
14. Floral City Garden Club: plants & related garden articles
15. ~~Annie's Attie: Doris DeSylva 341-1060~~
16. Southern Charm: Ninnah Soladean 637-4191
17. Floral City Station: Ellen Schneider
18. Cabin Clutter: Karen Johnson 341-0440
15. Gordon Kalbleisch 352-596-4167 3-D Acrylics
19. Glynn Brown 637-0592 - metal sculpture



"A Peek at Our Past"

A Standard Home Flower Show



March 24-25 1:00 - 4:00 p.m.

8219 E. Orange Avenue - Floral City, Florida

sponsored by The Floral City Garden Club

Ticket Number \_\_\_\_\_

"A PEEK AT  
FLORAL CITY'S PAST"

A  
STANDARD HOME FLOWER SHOW



WITH  
GARDEN FAIR, MUSIC  
& AFTERNOON TEA

MARCH 24 & 25  
1:00 P.M. TO 4:00 P.M.

Admission \$5.00  
Presented by the Floral City Garden Club



*The presentation of this Standard Home Flower Show  
is dedicated  
to the memory of  
Master Flower Show Judge  
and  
Floral City Garden Club past President*

*Mary L. Pritchard (Mrs. Marion G. Pritchard)  
October 23, 1922 to February 18, 2001*

*Mary's first love, after her family, was Garden Club work  
and she was the guiding light and inspiration for this Show.  
As a tribute to Mary, her husband, Marion Pritchard, an  
accomplished poet, chose one of his poems in her memory.*

### ***"TO MARY"***

*I talk to my Lord every morning  
The moment I step outside  
And see the beauty of His handiwork  
Across the countryside.*

*I talk to my Lord at the noon time  
Whether cloudy or rain or sun  
And tell Him just how marvelous  
Are all the things He's done.*

*I talk to my Lord in the evening  
Just after the sun has set  
And ask Him, Lord, please wait for me  
I've not done talking yet.*

*I'll talk again at my bedside  
Before I try to sleep  
To ask You to abide with me  
And pray my soul You'll keep.*

# ***“A Peek at Floral City’s Past”***

## ***A Standard Home Flower Show***

*sponsored by*

***The Floral City Garden Club***

*a member of*

*the National Council of State Garden Clubs  
and  
Florida Federation of Garden Clubs*

***Saturday & Sunday, March 24 & 25, 2001  
1:00 to 4:00 p.m.***

***The Historic Jont Knight House  
8219 E. Orange Avenue  
Floral City, Florida  
(352) 860-2953***

*Admission: \$5.00 per person over 12 years*

***Floral City...Where History Comes to Life***

# ***“A Peek at Floral City’s Past”***

## **A Standard Home Flower Show**

### **The Committee**

**Co-Chairmen**.....Patricia Neel & Cathi Ayers

**Consultant**.....Mary Pritchard

**Schedule**.....Marcia Beasley

**Staging**.....Pamela Bellman

#### **Horticulture:**

Entries/Classification...Dorothy Clark

Consultant..... Lynn Bassett

Placement.....Jo Ann Quackenbush & Minnie Minnis

#### **Design:**

Entries/Classification...Dorothy Sherman

Consultant.....Frances Simpson & Marcia Beasley

**Awards Chairman**.....Jeanne Henson.

**Judges Chairman**..... Marcia Beasley & Frances Simpson

**Clerks Chairman**.....Pattie Barber

**Hostesses Chairman**.....Cheri Boggs & Cathy Foley

**Garden Tea Chairman**.....Marie Jones

**Garden Fair Chairman**.....Joan Knippen

**Grounds** ..... Wayne Duma, John Korycki & George Sudheimer

## **GENERAL RULES**

**1.** In every respect, this show will comply with the objectives and requirements for a Standard Home Flower Show as established by the National Council of State Garden Clubs, Inc. The 1999 edition of the HANDBOOK FOR STANDARD FLOWER SHOWS with revisions will be used as authority. The Standard System of judging will be used and the judges' decisions are final. This Flower Show Schedule is the law of the Show and infraction of the rules may mean disqualification.

**2.** Plant materials on the Florida Conservation List which have been grown by the exhibitor or legally obtained and which have been labeled with botanical and common names (where known), may be used in all Divisions.

**3.** Entries for the Horticulture and Design Divisions are open only for members of the Floral City Garden Club and advanced registration is required for all entries in all Divisions. Register with the Horticulture Entries Chairman, Dorothy Clark (344-2339) and the Design Entries Chairman, Dorothy Sherman at (726-4582) by Monday, March 19, 2001.

**4.** Entries must be in place and all exhibitors out of the Flower Show area by 9:00 a.m. Saturday, March 24, 2001. "Additional Rules" specify entry times.

**5.** All entries must be verified to meet the Schedule requirements by the Classification Chairmen of the respective Divisions before the Exhibitor may place a design or leave a horticulture specimen in the Flower Show area. The Classification Committees are the final authority in disqualifying entries not conforming to this Flower Show Schedule.

### **Continue General Rules**

6. Judging will begin at 10:00 a.m. on Saturday, March 24, 2001. Only the required personnel will be allowed in the Flower Show Home and Horticulture staging area during the judging.
7. This Standard Home Show will be open to the public from 1:00 to 4:00 p.m. on both Saturday and Sunday, March 24 and 25, 2001. A five dollar admission fee will be charged to all visitors over 12 years of age. Children under 12 must be accompanied by an adult.
8. The Show will be dismantled immediately after 4:00 p.m. on Sunday, March 25th and all entries will be removed from the Home Show area by 6:00 p.m.
9. All care will be taken to safeguard exhibits. All properties must be **inconspicuously** marked with the name of the exhibitor.

NEITHER THE FLORAL CITY GARDEN CLUB, ITS MEMBERS, THE FLOWER SHOW JUDGES, THE HOME-OWNERS NOR ANY PARTICIPANT IN THE GARDEN FAIR AND MUSIC, WILL ASSUME LIABILITY FOR DAMAGE OR LOSS TO ANY ENTRY NOR TO THE PERSONAL INJURY OF ANY PARTICIPANT OR VISITOR.

## AWARDS

1. If merited, two (2) **BEST-IN-SHOW AWARDS** (rosette of three blue ribbons) may be awarded one (1) each in both Horticulture and Design Divisions; each must score 90 or more (decision is by the judges.) All classes in each Division are eligible.
2. Two (2) **SWEEPSTEAKS AWARDS** (rosette of green and white ribbons) shall be awarded one each in both Horticulture and Design Divisions to the Exhibitors winning the largest number of awards (most blue ribbons.) In the case of a tie, red ribbons will be counted, also. (The Committee tabulates the number to determine winners.)
3. An **AWARD OF APPRECIATION** will be presented to the Historic Home Owners, Dave and Pamela Bellman by the Floral City Garden Club.
4. A **TRI-COLOR AWARD** (rosette of blue, red and yellow ribbons) may be awarded a blue ribbon winner scoring 95 or more, selected from Design Classes 3, 4 and 5 (decision is by the Judges.)
5. **AWARDS OF MERIT** (rosette of orange ribbons) may be awarded to a blue ribbon winner, scoring 95 or above, in any Section of Horticulture. No more than five (5) may be offered and awarded (decision is by the Judges.)
6. One (1) **ARBOREAL AWARD** (rosette of two values of green ribbons) may be awarded from Horticulture Section G, Classes 27, 28 and 29 (decision is by the Judges.)

**STANDARD SYSTEM OF JUDGING AND AWARDING** will be used for this Standard Home Flower Show. The Standard System allows only one (1) first blue, must score 90 or above; one (1) second red, must score 85 or above, and one (1) third yellow ribbon, must score 80 or above, to be awarded in each class or each sub-class, if merited. One (1) honorable mention white ribbon, must score 75 or above, may be given in a class or sub-class, when merited.

## **HORTICULTURE**

### **Additional Rules**

1. All specimens, whether cut, hanging, mounted or container grown, **MUST** have been **grown by the exhibitor** and must have been in the possession of the exhibitor for not less than three (3) months.
2. All specimens must be **labeled** with the correct botanical name (genus and species), variety or cultivar, when possible and the entry tag shall include the exhibitor's name.
3. All horticulture classes shall be open to **amateur growers** within the Floral City Garden Club. Members may enter more than one (1) exhibit per Class provided **each** exhibit is of a different variety, cultivar, type or color which may be sub-divided by the Classification Committee.
4. **Double potting** (placing one container inside another) is permitted, provided the exterior container is appropriate for the theme of the Show and is approved in advance by the Horticulture Committee.
5. **For cut specimens**, containers, appropriate to the theme of the Show, and wedging material, if needed, shall be provided by the committee. Foliage naturally grown on the specimen is permitted but not below the water line.
6. More than one plant of the **same** variety, cultivar, type or color is permitted in a container.

**continue Horticulture Rules**

**7.** Only clear water may be used **to clean** the foliage of specimens. Horticulture must be show worthy, well groomed, free from disease and insect damage.

**8.** Horticulture entries in containers, hanging or mounted may be **entered on** Friday, March 23, 2001 between 2:00 and 6:00 p.m. and on Saturday, March 24, 2001, before 9:00 a.m.

**9.** The Placement Committee shall place all entries in the proper class location in the Flower Show.

**10.** Horticulture will be judged in accordance to the Horticulture Scale of Points, Section VI, *Handbook for Flower Shows*.



## HORTICULTURE CLASSES

### Division I

#### *"Trails and Commerce of our Past"*

W.H. Havron who in 1883 surveyed the town of Floral City had this to say: *"FLORAL CITY, a newly laid out town, is located on a high elevation on a peninsula between Chalo (Tsala) Apopka Lake and Lake Consuelo, nestling among the hills, its sandy beach skirted with mammoth live oaks. Chalo Apopka Lake is eighteen miles long and has a lake shore of seventy-five miles; it is situated in the great orange belt, in a climate entirely free from damaging frosts, where all kinds of vegetation and semi-tropical fruits flourish to perfection."*

#### SECTION A

##### *"Ancient Indian Trails Extended Through our Past"*

*"There was a well-developed Indian trail noted by colonial explorers that linked Tampa Bay to the Indian Village of Alachua.*

**Container plants grown for their foliage. Container not to exceed 8" in diameter.**

#### CLASSES:

1. African Violet
2. Bromeliads.
3. Spathiphyllum
4. Other

#### SECTION B

##### *"In our Past the Toscaste Village Existed Here for More Than 800 Years"*

*An Indian village named Toscaste existed for more than 800 years at the site of the present day Floral City and was located along the very important trail noted above.*

**Continue Horticulture Division I Section B**

**Container plants grow for their foliage. Container more than 8" but less than 12" in diameter.**

CLASSES:

5. Bromeliads
6. Dracena
7. Ferns
8. Other

**SECTION C**

***"The Old Military Trail Was Significant to our Past"***

*This same trail was used by Spanish Conquistadors Panfilo de Narvaez and Hernando de Sota in the early 16th century during their explorations of Florida in search of gold and conquest.*

**Container plants grown for their foliage. Container 12" in diameter more.**

CLASSES:

9. Ficus
10. Schefflera
11. Hibiscus
12. Other

**SECTION D**

***"Steamboats served the lakes, canals and rivers in our past."***

*In 1884, the Florida Orange Canal and Transit Company constructed the five mile-long Orange State Canal in order to link Floral City farmers with the railhead at Lake Panasoffkee. There were four small paddle wheel steamboats working this transit line carrying citrus, lumber, turpentine, produce and passengers.*

**Hanging or mounted plants grown for their foliage.**

CLASSES:

## **Continue Horticulture Division I Section D**

13. Ferns
14. Bromeliads
15. Hoya
16. Other

## **SECTION E**

### ***“Phosphate made Floral City a boom town in our past.”***

*Hard-rock phosphate deposits were discovered in the Floral City area just before the Big Freeze of 1894/95 devastated the citrus economy. By the beginning of the 20th century, the phosphate boom was in full swing and the city boasted an impressive collection of phosphate companies. A ceaseless flow of phosphate as being sent by railway to the gulf port and from there it was shipped out to Europe, until the WW I brought a halt to the European phosphate market.*

### **Hanging and mounted plants grown for their bloom.**

#### **CLASSES:**

17. Bromeliads
18. Begonia
19. Orchids
20. Other

## **SECTION F**

### ***“The Railroad was a Critical Part of our Past”***

*The iron rails were laid through Floral City in 1893 and as new mines opened, the population soared to more than 10,000. South Florida Railroad was initially part of the Henry B. Plant System, but over the decades that followed, ownership changed several times. Trains no longer stopped in Floral City after WWII and the charming old depot fell into disuse and was torn down in 1949. The track was dismantled and removed in 1987/89.*

**Continue Horticulture Division I Section F**

**Container plants grown for their bloom. Container not to exceed 12" diameter.**

**CLASSES:**

21. Begonia
22. Orchid
23. Impatiens
24. Other

**SECTION G**

***"Graceful Two-story Hotels and Homes were a Part of our Past"***

*The historic buildings of Floral City represent an important cluster of cultural resources. The structures were constructed by master carpenters or lay builders who drew on traditional building techniques and personal preferences for their building inspiration. The result was a rich variety of styles, materials and features. Many of these have been lost, but there are eighteen properties with historic buildings that comprise a National Historic District.*

**Cut specimens**

**CLASSES:**

25. Blooming bulbs, tubers, rhizome---not to exceed 15" height
26. Blooming annuals or perennial---not to exceed 12" height
27. Arboreal grown for foliage---not to exceed 24" height
28. Arboreal grown for flower or fruit---not to exceed 24" height
29. Arboreal needled evergreen---not to exceed 24" height
30. Other foliage not grown for its bloom---not to exceed 24 " height.
31. Display exhibited for artistic effect as well as cultural perfection and consists of at least five different cut specimens  
---none to exceed 24" height

# DESIGN CLASSES

## Division II

### Additional Rules

1. Each design entry must be the sole work of the exhibitor, however, plant material may be obtained from any source. The exhibitor will visit the home to obtain color and dimensions of the area in which the design will be placed. An exhibitor who is unable to participate after making advanced registration must provide a substitute.
2. The use of fresh plant material is encouraged throughout the Show and some fresh plant material must be used in ALL classes. **ALL FRESH PLANT MATERIAL** must be used in Classes 3, 4 and 5, which are eligible for the Tricolor Award.
3. Accessories, features, bases, and underlays are permitted in all classes as appropriate. Backgrounds are permitted in Class 1, 2 and 3 as appropriate.
4. **The use of artificial plant material and the embellishment or treating of fresh plant material is prohibited.**
5. Neither the use of prepared food, cut fruit, birds and bird nest, religious symbols nor the American flag may be used in these Design Classes, nor are Landscapes and Scenes permitted in this Design Division.
6. Dried plant material may be treated in any manner. Contrived flowers may be used if contrived from real plant material, fresh or dried. Container grown plants may be used in Class 5 and living plants with roots attached are permitted in all classes as appropriate.

## **Continue Design Rules**

7. The Floral Designers must keep their exhibits in good condition for the duration of the Show. (Note: special attention shall be paid to Class 3.)

8. Initial placement of design entries for Class 1, 2, 4 and 5 may be made on Friday, March 23, 2001, between 2:00 and 6:00 p.m. and placement of entries for all classes may be made on Saturday, March 24, 2001 between 8:00 and 9:00 a.m.

9. Entries in the Design Classes shall be placed by the Exhibitor, unless otherwise specified by the exhibitor.

10. Designs will be judged in accordance to the Design Scale of Points, Section VI, *Handbook for Flower Shows*

**DESIGN CLASSES**  
**Division II**

***"THE CULTURE OF OUR PAST"***

**Continuing the description of Floral City by surveyor, W.H. Havron:** *"The hotel at Floral City, seventy feet above the lake, gives excellent fare to all who wish to visit the Venice of the lakes in the Italy of America. There is no place in Florida where the sportsman can gratify his taste more fully than here. The lake is full of fish, while the woods are teeming with deer, turkey and small game of all kinds."*

**CLASS I**

***"Cooking up a Taste of our Past"***

*Pan fried bass from the lake or catfish from the river, swamp cabbage from the woods, cracklin' corn- bread and sweet potato pie made a fine and dandy meal on any table in Floral City.*

Reproductions and/or antique cooking utensil(s), equipment, and/or linen(s) are used in a **STILL LIFE DESIGN**. Fresh, dried and/or treated plant materials including fresh fruit(s) and/or vegetable(s) are permitted. Staged in the kitchen.

1. Corner counter top in the southeast area
2. Kitchen table on the north side of the area
3. Butcher block top in the center of the area
4. Counter top of the west wall area

## Continue Design Division II

### CLASS 2

#### ***"Dreaming of our Past"***

*Fine crocheted linens, delicate jewelry, and feathered hats could be found in the bedrooms of the fashionable ladies of Floral City.*

A **TRANSPARENCY DESIGN**, which incorporates antique or antique-like item(s) into a Creative Design. Added lighting may be used. Staged in the two Bedrooms.

1. First bedroom on top of dresser on west wall
2. First bedroom on top of dresser on south wall
3. Second bedroom on bedside stand on east wall
4. Second bedroom on chest next to south doorway

### CLASS 3

#### ***"Bathing in Memories of our Past"***

*On Saturday nights the wash tub was filled for the weekly bath, but many a dip for pure enjoyment was taken in the Tsala Apopka Lake especially by the children of the village.*

Antique or antique-like office or toilet item(s) of cloth, wood, china and/or metal may be used in an **UNDERWATER DESIGN**, of all fresh plant material. Staged in the office area and adjoining bathroom.

1. On the desk in office
2. On the square table in office
3. On the round table by stairs in office
4. On the sewing machine in bathroom



## Continue Design Division II

### CLASS 4

#### ***"Serving up Tid-bits of our Past"***

*During the phosphate boom period of Floral City's history, elegant little dinners and teas were often held in the private homes of the mine superintendents and business men.*

Antique or antique-like food service item(s) of cloth, glass, china and/or metal may be used with all fresh plant material in a **HOGARTH CURVE DESIGN**. Staged in the Dining Room.

1. On pedestal right side of south window, plain wall
2. On a chest left side of south window, plain wall background
3. On a pedestal at the east side and in front of white door
4. On a pedestal in corner next to east doorway

### CLASS 5

#### ***"Reflecting in our Past"***

*By 1900 when Floral City boasted a population of 10,000 people, parlors reflected the affluence of the period.*

A **VIGNETTE DESIGN** includes a floral design with all fresh plant material and design of exhibitors choice, which may include container, grown plant(s) growing in soil and/or living plant(s) with roots attached. Staged in the Living Room.

1. North mantel with picture, vases, light fixtures & fireplace
2. South side by door with table, mirror, chair & lamp
3. North side west of fireplace with table, telephone & lamp
4. East side on low chest with picture and lace curtains

**SPECIAL EXHIBITS**  
**Division IV**

***“The Flora and Fauna of our Past”***

**Continuing the description of Floral City by surveyor, W.H.**

**Havron:** *“There is no place in Florida where the sportsman can gratify his taste more fully than here. The lake is full of fish, while the woods are teeming with deer, turkey and small game of all kinds.”*

**Class 1.**

***“Farm lands of our past”***

*The Armed Occupation Act of 1842, Florida statehood in 1845 and the removal of the Seminole Indian majority to the west, promoted the arrival of settlers eager to take advantage of the generous land deal in this area which contained abundant timber and suitable farm land, plus a water way for transporting the produce.*

A fenced garden with raised vegetable beds demonstrates a method of gardening which has proven successful to this historic home owner.

**Class 2.**

***“Propagating our Past”***

*Floral City is fortunate to have descendants from the early settlers who have shared the history of Floral City and assured that it is passed on to each generation.*

A greenhouse provides examples of propagation methods for a wide variety of plants. It also provides a safe harbor for container and hanging plants during the chilly days of Floral City winters such as the most recent one.

**Continue Special Exhibits Division VI**

**Class 3.**

***"The Chalo Apopka Lake of our Past"***

*Although it is called Tsala Apopka Lake today, the lake, the Orange State Canal and the Withlacoochee River were teeming with fish and wildlife.*

A garden pond contains appropriate plants and fish while serving as a watering hole for wildlife.

**Class 4.**

***"Baking from the gardens of our Past"***

*Vegetable gardens in the past provided a bounty of stores for the daily meals which invariably included a special dessert.*

A afternoon tea table is laden with cakes and pastries made with a variety of vegetables.

- A. Country Cauliflower Cake
- B. Can't Be Beet Cake
- C. Pork and Bess Cake
- D. Cagey Kraut Cake
- E. Egg-Plant Cake
- F. Sweet 'N' Spicy Squash Cake
- G. Zucchini Zenith Brownies
- H. Perky Pumpkin Crunch

# DESIGN

## DEFINITIONS/DESCRIPTIONS

### **STILL LIFE DESIGN:**

Grouping of plant materials and other components by which a story is told or a theme interpreted. Any combination of flowers, foliage, fruit or vegetables is placed where needed for rhythm and color throughout design, instead of using a flower arrangement in a container.

### **TRANSPARENCY DESIGN:**

Creative Design including see-through element/s which permit some components to be viewed through others. Planes and forms are juxtaposed by overlapping, giving a three-dimensional effect to depth and space. Added lighting, e.g. under-lighting, may give a more transparent effect.

### **UNDERWATER:**

A Creative design with part/s placed underwater to create interest and surprise. Scale must be given consideration when selecting plant materials. The forms of material/s placed underwater show more clearly in clear or transparent containers. Plant materials having hard surface qualities should be used as these will not deteriorate rapidly when submerged (evergreens, tropical flowers and foliages are suggestions.) Materials and mechanics should be checked for lasting qualities before using them in the flower show. Underwater designs are not to be confused with the old-fashioned, clear glass ball holding a single bloom underwater.

### **VIGNETTE:**

In flower shows a Vignette is a small functional section of a room (floor space to be stated in the schedule) which may include furniture, draperies, floor covering, paintings, etc. A Vignette must include a floral design or other decorations using plant materials, such as Christmas trees, wreaths, etc. All components used must relate to one another, in some way, through style, color, texture, etc.

Flower Show Prep  
2001













# Garden club plans show, fair

*Special to the Chronicle*

Floral City Garden Club announces a change to the pre-scheduled monthly meeting. The meeting will be at 10 a.m. today at the historic property of member Pamela Bellman on Orange Avenue, the second house west of the traffic light on U.S. 41 in Floral City.

This will be a meeting in her yard and members and guests are asked to bring a lawn chair and a bag lunch.

The club will present a Standard Home Flower Show with Garden Fair, Afternoon Tea and Music from 1 to 4 p.m. on March 24 and 25 at this historic home. Therefore, the club will review the committee reports for the event.

In addition, the club will hear from the nominating committee who will present the 2001 to 2003 slate of officers. Officers will be elected and installed at the May luncheon.

A floral design is placed in the Floral City Public Library monthly by the club and the design for March has been prepared by Patsy Neel.

Visitors are welcome and can obtain information by calling the president, Marie Jones, at 344-0880 or the First Vice President and Membership Chairman Cathi Ayers at 341-0546.



# Flowers, crafts to highlight town's history

Special to the Chronicle

Vignettes: "reflecting our past," still lifes: "cooking up a taste of our past" and transparencies: "dreaming of our past" are a few of the floral design class titles that visitors will view at the coming Standard Historic Home Flower Show presented by the Floral City Garden Club.

Titled "A Peek at Floral City's Past," this flower show will take place from 1 to 4 p.m. Saturday and Sunday, March 24 and 25, in the Historic Jont Knight House on Orange Avenue in Floral City.

Activities for the event are not limited to the flower show, but will include a garden fair and afternoon tea with music, all of which are offered to the public for a \$5 ticket that may be purchased in advance but will be available at the gate on Saturday and Sunday.

The flower show schedule booklet, given to each attendee, sets the stage for the event with statements of history for each section and class. Flower show schedule chairman Marcia Beasley says, "The text of an 1884 photographic slide for a stereopticon was chosen as the basis for the theme." The slide was published by W.H. Havron who surveyed Floral City in 1883.

Co-chairmen of staging are Pam Bellman and Joan Quackenbush. Bellman explains: "Horticulture, floral designs and special exhibits will be placed throughout my home and in the yard." This historic property is owned by Dave

and Pamela Bellman and known locally as the Historic Jont Knight House, built circa 1880-1905.

Garden fair chairman Joan Knippen has announced that an array of gardening and nature-related artisans will constitute the garden fair, encircling the yard at the rear of the property. At present, 13 booths

will have hand-made and/or nature-related products for sale. These include painted gourds, slate and bottles; crafted pillows, clay pot figurines and fish prints; hand-made squirrel and bird feeders and tin roofed bird-houses; a variety of wreaths

and pine needle-woven items and antiques selected for their appropriateness to the theme.

"From 1 to 4 p.m. each day, the garden club will serve tea in the garden," states afternoon tea chairman Marie Jones. She further describes the event: "pots of hot teas and plates of delicate homemade tea pastries will be served on china from the lace covered tables." Visitors to this unique event may choose an interesting seating location from which they may listen to the music of the day.

Proceeds from the event will be used in the beautification of Floral City, the Memorial Garden and other club projects. For further information about the Standard Historic Home Flower Show with Garden Fair, Afternoon Tea and music, call the co-chairmen: Patsy Neel 860-1531 or Cathi Ayers 341-0546.

*Proceeds from the event will be used in the beautification of Floral City, the Memorial Garden and other club projects.*

National Council of State Garden Clubs, Inc.

A Peek At Our Past FLOWER SHOW

Date 3/24/2001

DIVISION I SECTION A

CLASS No. 7 ENTRY No. 12

LILIACEAE: PIEDMONT  
BOTANICAL OR DESIGN CLASS NAME  
REFLEXA 'SONG OF INDIA'

EXHIBITOR C. AYERS

CLUB Floral City

1st 2nd 3rd Honorable Mention

Exhibitor C. AYERS

Address \_\_\_\_\_

Club \_\_\_\_\_

Division \_\_\_\_\_

Class No. \_\_\_\_\_



FLOWER  
SHOW  
AWARD



FIRST  
PLACE

# Digging for success



Photo: Wayne J. Parsons for  
Cathy Foley and Sheila O'Dell work on weeding some plants that will be for sale during the Floral City Garden Club's Historical Home and Garden show and sale. The event will be March 24 and 25. Tea and pastries will be served as a part of the tour.

**“BAKING FROM  
THE GARDEN OF  
OUR PAST”**

**A DESERT RECIPE BOOK**

Put out by the

**FLORAL CITY GARDEN  
CLUB**

From the recipe's used at the  
**Garden Tea**

**ON SALE HERE**

**\$1.50**



# Know threat of freezing, drought

By Cheri Harris  
Staff writer

**A**S THE WARM weather and sunshine banish the winter chill, many Citrus County residents are heeding the almost instinctual urge to dig in their flower beds and gardens and get ready for summer.

But no matter how green your thumb, there are two threats to gardening bliss that shouldn't be ignored.

The first is planting tender plants that might not stand up to a frost if Citrus County has another cold snap.

The other is the ugly specter of the worst drought in many years — a drought that makes the idea of planting a lavish garden full of thirsty flowers imprudent.

## What to plant

Floral City Garden Club member Pam Bellman shared some hints on what plants can be safely planted now.

Hardy flowers, such as pansies, petunias and snapdragons can withstand the cold, but Bellman noted that they can't take the heat.

"Once the summer sun gets here, they do not like it, and they will die," Bellman said.

"January and February is a good time to plant your bulbs, like your irises, cannas, day lilies, gladiolus, amaryllis, agapanthus and walking irises," she said.

Bellman recommended following package instructions when planting bulbs. She said plants in cartons should be planted so that the soil in the carton is even with the soil in the surrounding flower bed.

It's also a good time to plant trees, because they are still dormant and won't be affected by another frost, Bellman explained.

Azaleas and camellias are also freeze-resistant, and they are already in bloom, so they can provide an instant spot of color in a winter-browned lawn.

"Azaleas are very good for planting now. They're real hardy," Bellman said.

Lantana, a flowering shrub, is a native Florida plant that can withstand Florida weather — and requires very little water, Bellman said. Bellman recommends waiting until mid-March to plant anything that won't withstand a frost.

It's not too early to start a vegetable garden. Citrus County Extension Service Master Gardener Chet Olszewsky said he likes to start many of the seeds for his vegetable garden in containers, such as old egg cartons.

Container gardening allows him to move the plants in and out-of-doors, protecting them from a frost or hungry noc-

turnal creatures such as insects or mice.

The advantage of starting a vegetable garden now is that crops can be harvested "before the worms and the bugs harvest them for you," Olszewsky said.

Olszewsky noted that insects will be a problem as soon as the summer warmth sets in. "In Florida, you just cannot eliminate bugs. There's no way you can eliminate bugs, but you can control them," he said. He noted that the insecticide diazinon is the only product approved for use in a garden where edible foods are grown.

Bellman listed a number of garden vegetables safe to plant now, including broccoli, cauliflower, Brussels sprouts, eggplant, onions, green beans, parsley, peas, bell peppers, spinach, collard greens, mustard greens, squash, tomatoes, potatoes, carrots, radishes, cucumbers, sweet corn, turnips, carrots and other root vegetables.

#### **Water shortage looms**

Southwest Florida Water Management District Community Affairs Coordinator Jimmy Brooks warned that saving water is important. "We're really reaching a critical time of the year when it comes to water conservation because we're typically in our driest season. We've gone awhile without rainfall, beyond the fact that we're in the worst drought we've ever seen," Brooks said.

Brooks noted that besides lawn irrigation straining water supplies, natural

spring plant growth and water loss from evaporation add to the shortage. "It just really compounds on us all during the spring months. And throw on top of that the fact we're in a two-year rainfall deficit. This is the worst on record," he said.

Art Evans of Beverly Hills said he and his wife, Vera, usually add new plants to their flower gardens. But this year, they have scaled back, preferring instead to transplant and divide plants from their yard, such as amaryllis and cannas.

To further conserve, Evans said he uses grass clippings and other mulch around their plants and orange trees. Bellman recommends watering before 9 a.m. or after 5 p.m. "When you water during the day, you're throwing water away," she said. At her house, she irrigates with rainwater caught in the gutters and collected in an underground cistern.

Brooks explained that in Citrus County, watering restrictions are different for flower and vegetable gardens and other non-lawn areas than they are for lawns.

Flower beds, vegetable gardens and other non-lawn areas may be irrigated as needed using a hand-held watering device with a shut-off valve or micro-irrigation or other low-volume watering methods, he explained.

But lawns can only be watered once a week before 9 a.m. or after 5 p.m. in unincorporated parts of Citrus County.



*Dave Siger/Chronicle*

**Pam Bellman plants broccoli in the garden at her Floral City home. Broccoli grows better when planted while the temperature is a bit cooler. Summer heat is too much for the plant to grow.**

Watering days are based on the last digit in a residential address.

*For more information on residential watering rules, see page 2A of today's Chronicle.*

Contact Cheri Harris at 563-5660 or [jalw2@yahoo.com](mailto:jalw2@yahoo.com).







"A Peek at Our Past"

A Standard Home Flower Show

with Garden Fair (Featuring the work of Local Artists & Craftsmen)

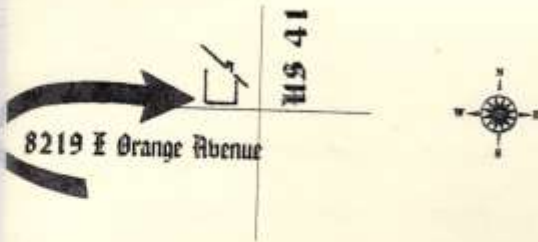
Afternoon Tea & Music

Sat. March 24 & Sun. March 25 / 1:00 PM - 4:00 PM



At the Historic Jont Knight Home  
8219 E Orange Avenue, Floral City, Florida

Admission is \$5.00 per person



by The Floral City Garden Club

JUDGE

CLERK

HOMES



# Floral City Garden Club

## Giant Annual Plant Sale & Gourmet Sweet Boutique

Saturday ~ April 27

9:00 AM ~ Until

Floral City Community Building

*Free Presentation!!!*

9:30AM Michael Harnden, Certified Tree Arborist,  
"Problems Weed Killers Make for Trees"

10:30 AM Chet Olshewski, Master Gardener,  
"Do's & Don'ts of Florida Gardening"

All sales benefit the beautification  
of Floral City

# Get wise to

*Free program to tell  
what attracts them*

*Special to the Chronicle*

The Floral City Garden Club's next meeting will be hosted by Cathy Foley at 1 p.m. Friday at her home on Turner Avenue in Floral City.

Weather permitting, the club will meet outdoors among Foley's many wildflower gardens, azaleas and dogwood trees. Members and visitors are asked to bring a lawn chair and to car-pool at 12:15 p.m. from the community building.

Terry Newman, Patricia Neel and Dottie Sherman will greet members and visitors while Cheri Boggs and

Marcia Beasley serve light refreshments during the social period. The business meeting will be called to order by President Cathi Ayers.

Reports will be given about the following: the progress of the Floral City Historic Tree Evaluation Project, co-financed with the Floral City Heritage Council; the County Tree Ordinance, first public hearing Thursday; the annual giant plant sale April 27; and the club's new scholarship program.

## **Plants for butterflies**

The program, plants and flowers that attract butterflies, will be presented at 2 p.m. by Master Gardener Joellen Allen.

The public is invited to attend.

Call Shelia O'Dell, program chairman, at 344-3379 for more information and directions.

# butterflies

## **ON THE NET**

■ **Floral City Garden Club:**  
[www.nccentral.com/fcgc](http://www.nccentral.com/fcgc)

The monthly "Grow And Share Table" will be set up by member Peggy Pattillo and all members are encouraged to bring any bulbs, cuttings, starts or plants that they wish to share.

## **Adopt-a-highway**

Members and friends will meet at 9 a.m. March 28 at the community building to begin the club's 15th year in the Citrus County Adopt-A-Highway Program. Roadside trash will be picked up on County Road 48 from U.S. 41 to Trails End Road.

Trash bags, gloves, and safety vests will be provided. Anyone who would like to join is welcome.

## **Scholarships**

The Club is sending applications for scholarships, upon request, to Citrus County high school sophomores, juniors, seniors and students attending a Florida college or university. Students must be majoring in ecology, horticulture, landscape design, landscape architecture, conservation, botany, forestry, marine biology, city planning or allied subjects. Applicants must have a "B" average or above, show a financial need for aid and enrolled full time. Applications must be received by May 1. To receive an application, call Cathi Ayers, president, 637-6345 or e-mail her at [cabp@tampabay.rr.com](mailto:cabp@tampabay.rr.com).

For more information about the club and its programs, visit its Web site at [www.nccentral.com/fcgc](http://www.nccentral.com/fcgc).

Jo Ann Quackenbush, membership chairman, can be called at 344-4447.





# Gardeners gather to sow ideas

*Summer has been  
a time to socialize*

MARCIA BEASLEY  
Special to the Chronicle

Even though the Floral City Garden Club hosted its last formal meeting weeks ago, club members continue to work and socialize during the summer. The board has met to plan the program and year book for next season and to plan a summer workshop and gathering.

All members who have taken photographs and collected news articles dur-

ing the past two years will meet to compile a history book for President Cathi Ayers' administration.

This workshop will convene at 10 a.m. Thursday in the Floral City Community Building. All members are invited.

Because club members want to get together to see each other, a "Summer Gathering" has been organized at 11:30 a.m. Friday, Aug. 16. Members and their spouses will gather for a social and potluck luncheon at the Floral City Community Building to welcome all new members and their spouses at the get-acquainted mixers. For the meal, members are asked to bring a luncheon salad or dessert. Table settings, plates and beverages will be provided.

The club's watering can logos has been developed into transfers to be placed on T-shirts. Some members will bring the T-shirts they have made as examples. Members will be able to purchase the transfer to put on a shirt of their choice or, if they prefer, they may request that a transfer be placed on a single type of shirt for them. Information will be available at the Summer Gathering and transfers will be available throughout the year.

A tour of the Community Memorial Garden may be given for those who have not yet visited the area. It has become an ideal site for weddings.

For more information about the history book workshop or about the

- **WHAT:** Floral City Garden Club history book workshop.
- **WHEN:** 10 a.m. Thursday.
- **WHERE:** Floral City Community Building.
- **WHAT:** Floral City Garden Club "Summer Gathering."
- **WHEN:** 11:30 a.m. Friday, Aug. 16.
- **WHERE:** Floral City Community Building.
- **GET INFO:** Call President Cathi Ayers at 637-6345.

Summer Gathering, call President Cathi Ayers at 637-6345.



"A Gathering in  
The Kingdom of the Sun"



*Original Artwork by Lib Reeves, Pioneer Garden Club*

FLORIDA FEDERATION OF GARDEN CLUBS  
**DISTRICT V FALL MEETING**

October 22, 2002  
Pioneer Garden Club  
Ocala, Florida

# "A Gathering in The

This music was composed in 1925 by Brownè Grealon Cole, g  
Mrs. Cole organized the first band in Marion County v

The Kingdom of the Sun

BROWNÈ GREALON COLE

Tempo di waltz

Way down in the  
Where the tall pal-

birds are - sing - along  
from - the - sky -

Where Stand the wind - are like state - ly  
balm - ti - nels to watch a - world pass  
set - tles grow by

Copyright MCMXXV by Brownè Grealon Cole  
Registered in the U. S. A.

Florida Federation of  
Garden Clubs, Inc.

# District V

Fall Meeting

October 22, 2002

Pioneer Garden Club  
Ocala, Florida

*"A Gathering Under  
the Kingdom of the  
Sun"*

Hosted by

Pioneer Garden Club  
Eileen Ferguson, President  
Joan McGuigan, Chairman

# PROGRAM

9:00 – 10:00      **Registration and Hospitality**

\*\*Please turn in any announcements  
In writing to the Assistant Director  
*Thank you*

## CALL TO ORDER

Invocation      **Russel Hines**

**Pledge of Allegiance to the Flag of the  
United States of America**

Led by: **Charles Seckinger**  
*Pioneer Garden Club*

Welcome      **The Honorable Gerald Egle,  
Mayor, Ocala, FL**

Greetings      **Eileen Ferguson, *President***  
*Pioneer Garden Club*

Response      **Ethel Rice, *President***  
*Garden Club of Crystal River*

Appointments      **Claudia Bates, *Director***  
*District V*

Introductions      **Claudia Bates**

Financial Report      **Terry Morrissey, *Treasurer***  
*Pioneer Garden Club*

**Presentation of State Officers**

**CREDENTIALS REPORT**  
**Velicia Deas, *Registrar***

---

**Elections**      **Andrea Fuller**, Chairman  
Nominating Committee  
*Inverness Garden Club*

## District Chairmen Reports

Reva Pachevsky – *District V Awards*  
Dottie Bishop - *District V Ways & Means*  
Carol Brown - *2004 Convention Committee*

## Introduction & Reports of District V

**Garden Club Presidents\*\*** *Reports are optional-*

✓ Belleview	✓ Four Seasons
✓ Brick City	✓ Gainesville
✓ Beverly Hills	High Springs
✓ Cedar Key	✓ Homosassa River
✓ Citrus	✓ Inverness
✓ Crystal River	✓ Lake City
✓ Dunnellon	✓ Newberry
✓ Floral City	✓ Pioneer
	Seedlings

**Blessing**      **Dottie Bishop**,  
*Pioneer Garden Club*

**Recess Luncheon**

**Program**      **Rita Hilton**, *Master Judge &*  
*FFGC Treasurer*

**New Business**

**Announcements**      **Carol Brown**, *Assistant Director*  
*Garden Club of Crystal River*

**Door Prizes**      *Pioneer Garden Club Members*

-Special thanks to **Hatchet Creek Nursery** for the donation of the beautiful plants for our District V Ways & Means

*-The Director wishes to thank all those who so graciously agreed to serve when asked.*

**-A most hearty and heartfelt thanks to the Officers and members of *Pioneer Garden Club* who worked enthusiastically and diligently to ensure a great District V Fall Meeting in their beautiful clubhouse. It is always a pleasure to be in Ocala at the Pioneer Garden Center!!**

**-Drive carefully and have a safe trip home.**

**NOTES** Springtime April 12  
\_\_\_\_\_  
\_\_\_\_\_  
\_\_\_\_\_  
\_\_\_\_\_  
\_\_\_\_\_  
\_\_\_\_\_  
\_\_\_\_\_  
\_\_\_\_\_

# Kingdom of the Sun"

ndmother of Pioneer Garden Club Treasurer Carolyn Hightower.  
hile teaching music at Ocala High School in the 1920's.

## THE KINGDOM OF THE SUN

Way down in the Southland far away from ice and snow;  
Where the winds are balmy and the poinsettias grow  
There my heart is turning, all the long day thro.  
Yearning for the sunshine of Ocala.

Way down in the Kingdom of the Sun,  
There's where my heart is down among the roses,  
Down among the posies,  
Where the mocking birds sing to the moon.  
There we play about in Silver Springs all through the winter,  
Oh, you may roam the wide world o'er,  
you'll never find but one Ocala, in the Kingdom of the Sun.

Where the tall palmettoes, silhouettes against the sky,  
Stand like stately sentinels to watch a world pass by  
All along the highway, they watch and wait for me.  
Dreaming of the sunshine and Ocala.

Way down in the Kingdom of the Sun  
There's where my heart is down among the roses,  
Down among the posies,  
Where the mocking birds sing to the moon.  
There we play about in Silver Springs all through the winter,  
Oh, you may roam the wide world o'er  
you'll never find but one Ocala, in the Kingdom of the Sun.

# "A Gathering in The Kingdom of the Sun"

Florida from its beginnings has been a land populated by immigrants, from the first paleo-indians to the current residents of today. It was the Indian custom to gather at harvest time, to exchange commodities and ideas. Cultivation of corn appeared among the Deptford cultures around 800 A.D.

Alachua people migrated from the river valleys of Southern Georgia into Central Florida. Alachua tribes, the Potano Indians, also a Timucuan speaking people were the descendants of the Alachua culture that European explorers first encountered in what would become Marion County.

The county got its name at a meeting held at Fort King in early-1844. The name honored the memory of General Francis Marion, the revolutionary war hero from South Carolina known as the *Swamp Fox*. Many of the first settlers hailed from the Palmetto state.

Today, people continue to migrate to the Kingdom of the Sun from all parts of the globe.

We are all privileged to live in a "kingdom" so rich in history and culture.

Welcome to our "gathering".



# Floral City gardeners get

**MARCIA BEASLEY**  
*Special to the Chronicle*

A new year, new officers and eight new members since the closing meeting in May are the changes in the Floral City Garden Club.

The new club year will start with the first meeting at 12:30 p.m. Friday in the newly renovated Floral City Community Building, next to the fire station on Orange Avenue/County Road 48.

The officers and committee chairmen met during the summer to plan the program, projects and activities for the year. President Cathi Ayers has a number of changes in store. One is a special way in which club members can get to know new members by providing a

"Big Sister" to each new member.

First Vice President Jo Ann Quackenbush has been typesetting the club's yearbook, and has added photos of each member to the book, again in the spirit of "getting to know you." The club has grown so rapidly in the past year that this addition to the yearbook should be helpful.

Second Vice President Sheila O'Dell has been carrying out the plans of the board by completing the details for all the meetings and programs. This includes many meetings at club members' homes to see firsthand what grows in this area of Florida and to learn how to grow and landscape here.

Mary Lou Sloop and Janis

Lehowitz will share the office of recording secretary, while Kathy Hofmann will make deposits, pay the bills and track the budget as treasurer of the club.

At this meeting, members and visitors will be greeted by Terry Newberry, Dorothy Sherman and immediate past president Marie Jones.

Refreshments will be provided by Terry Newberry and Carol Hart.

The focus will be "Getting to know you" — a chance for old members to get reacquainted and for new members to be introduced by their "Big Sisters."

Not only will the club be "getting to know each other," but they will be "getting to know the club" as committee

chairmen present an overview of the responsibilities of and the work planned for their committees.

In addition to presenting activity, the meeting will provide new members with information as they decide about the areas of club work in which they would like to be most actively involved.

It also will provide the new members with an overview of the mission of garden clubs affiliated with the Florida Federation of Garden Clubs and the National Council of Garden Clubs.

Nomination plans for the club's own "Yard of the Year Awards" will be made and a "Grow and Share" table will be available, where members and guests may bring cuttings,

seeds and bulbs of plants they have grown in their own gardens over the summer.

In three weeks, the club will begin its 13th year in the Citrus County Adopt-A-Highway Program. The Floral City Garden Club was the first garden club in the county to join the program when it was initiated in 1989 by Gerald Clark, then director of public works. Since then, the club has picked up trash on the roadside of a two-mile strip of County Road 48 four times a year. Volunteers (not limited to club members) will meet at 8 a.m. Thursday, Sept. 27 in front of the community building. Bags, vests, gloves and a limited number of picks will be provided.

Although old in organization — founded in 1956 — the club

- **WHAT:** Floral City Garden Club meeting.
- **WHEN:** 12:30 p.m., Friday.
- **WHERE:** Floral City Community Building, next to the fire station on Orange Avenue/County Road 48.
- **GET INFO:** Call President Cathi Ayers at 637-6345 or Membership Chairman Jo Ann Quackenbush at 344-4447.

is young in spirit and enthusiasm. The club welcomes others to visit and join at any of the meetings. For additional information, call President Cathi Ayers at 637-6345 or Membership Chairman Jo Ann Quackenbush at 344-4447.

WEDNESDAY, SEPTEMBER 12, 2001

to know each other

# SUMMER SOCIAL

Floral City Garden Club

invites YOU! Come one come all -- get to know each other --  
we'll have a ball !!!

Date : August 16, 2002

Time : 11:30 AM

Place : Floral City Community Building

Please bring a covered dish of your choice.

Please RSVP to Maureen 341-1068 by 8/9/2002



# What's New in Old Floral City



## FC Garden Club's 'Yard of the Year' Awards



Homeowner Pam Bellman shows off her "Best Maintained & Specialty for Variety" award.

The 'Annual Yard of the Year Awards' were recently presented by the Floral City Garden Club to property owners in the community.

The awards program was initiated in the late 1980s and has continued with only a brief interruption ever since.

Photos By Marcia Beasley  
*Special to The Gallop Press*



Chairwoman Cathy Foley, left, presents the "Best Sustained Yard" award to Amanda Mullin.



Carol Hart holds the "Conservascape" award received from left, Bobbie Schoss, Carol Foley and Debbie Barney.



Chairwoman Cathy Foley presents Faith and Barry Coleman the "Specialty Garden" award.



# Circle *of* Life



# CIRCLE

Continued from Page 1D

The club also serves the community by extending financial aid to children.

"We give a scholarship to a high-school senior who is going to major in horticulture, agriculture, botany, landscape design — one of those related fields," said Ayers. "Also, every year we send two children to camp, which is run by the garden clubs for the whole state of Florida. It's called Camp Wekiva."

Ayers said that both the novice and the expert are wel-

come to join.

"Our garden club is a great mix of avid gardeners who know how to garden and love to share that information," she said. "There are those who know nothing about gardening and join because they want to learn."

Despite the dirt, dust and creepy-crawly critters that lurk underground, Ayers looks at gardening philosophically.

"You get to see the cycles of life, and you learn patience watching things grow," she said. "You learn to let go, because things die. It's also meditative when you're digging or weeding; it's a time that you can be reflective. Also, it's mental stimula-

“ You get to see the cycles of life, and you learn the patience watching things grow. ”

**Cathi Ayers**  
president, Floral City Garden Club

tion because it's not just hands in the dirt; it's really learning about plants."



ABOVE: At a recent meeting of the Junior Gardeners after-school club, fourth-grade students from Floral City Elementary School planted carrots, learned about growing beans and made compost with the help of volunteers from the Floral City Garden Club. From the left: Kristina Clutz, Kirby Wilburn, Caroline Christiansen and Jennifer Himes inspect the contents of a compost container.

TOP: Master Gardener and Floral City Garden Club member Gloria Uhl holds up a plant in progress. One of the goals of the Junior Gardeners program is for children to understand the process of the food they eat, from seed to table.

## Garden club cares for it sprouts by passing knowledge, wisdom to younger generation

DEBORAH BRADBURY  
For the Chronicle

**S**pring has sprung in the middle of autumn, thanks to a balmy climate and organizations such as the Floral City Garden Club, who keep Citrus County inundated with lush foliage and flowers all year long.

And much like a seed that is planted, blossoms and ultimately makes way for a new generation of flora, members of the 50-year-old club are passing on their expertise to the Junior Gardeners, a group of children from Floral City Elementary School.

The children's garden group was formed in 1998 by Dorothy Clark of Inverness and the late Mary Pritchard of Floral City. Since the Junior Gardeners is limited to fourth-graders, there is a new group each fall.

"Knowing how much we like flowers ourselves, we wanted to teach it," said Clark. "We sent out a letter to the class telling about the garden club — that we wish to instill in children a love of gardening that will stay with them the rest of their lives. It's something you do until you're old. I have a friend who's 88, and I'll go by (her house) and she's sitting down on the ground taking care of her rose bushes."

Club president Cathi Ayers of Floral City said



One of the surprising lessons for the Junior Gardeners was learning that plants can sprout in compost.

the children meet once a month at the school to study gardening and do what kids do best — dig in the dirt.

"We had a topic about birds and did picture identification," said Ayers. "We talked about how gardening and birds relate to each other, and why it's important to the birds that we maintain our gardens. At Christmas each year, we do floral designs so they have something to take home for their table. Last month, an adult helper brought

peanuts. Most of the kids didn't know that peanuts grow on plants, so they shelled peanuts and we made peanut butter."

This month the children watched beans grow in a glass jar using a wet paper towel for moisture, then each took one home so they can look each day and see the bean sprout.

They also talked about composting and showed how to make your soil rich, said Ayers.

Part of the curriculum involves bringing the children up to speed on environmental issues.

"Mostly we talk about general things they can do," said Ayers. "We ask them, 'What can you do to help the environment?' Most of them have already been exposed to this, but we try to develop it, such as recycling, composting, not littering."

Because of their many civic projects, the Floral City Garden Club continually entices new members, who range in age from 30-something to more than 90.

"We established and maintain a memorial garden to (honor) past members," said Ayers. "We also have a butterfly garden on the bicycle trail in Floral City. The butterfly garden (is comprised of) native plants that attract butterflies, and we've also got a bird feeder and bird bath there. It's part of the goal of the garden club — encouraging education and fun and helping the environment."

Please see CIRCLE/Page 10D





