

Floral City Garden Club

1998-2000 Year Book

Lake Life, Tuesday, June 17, 1997, Page 7

Flowery ceremony

Special to the Chronicle
New officers for the Floral City Garden Club were installed recently by Inverness Mayor Joyce Rogers, left. Officers for the 1997-99 administration period are, from left: Peggy Pattillo, president; Carol Hart, first vice president; Jeanno Henson, second vice president; Frances Simpson, recording secretary and Dorothy Colarusso, treasurer. Club meetings will resume the first Friday in September at 1 p.m. at the Floral City Community Building.







Frances Simpson,
Dorothy Clark,
Jeanne Henson





Sept. 14, 1998 Meeting
Butterflies +
Their Habitat





Visitor to
Memory Gardens
Heritage Days 1998





Marie Jones, Dave
Pattillo, Trudi Edwards



Peggy Pattillo



Terry Newberry

Beatification Committee
Work - Corner of Orange Ave
+ Old Floral City Rd.
Oct. + Nov. 1998



Marie Jones









Lynn Bassett
Adds Finishing Touch!



Crystal River Womens Club
Oct 28th tour of Historic District
Dinner arranged by
Ways + Means Committee F.C.B.C.





Junior Gardeners Dec. 1998
Garden Club Helpers
Kathy Myers
Dorothy Clarke
Patti Barber





Carols 'n Candles
1998





Jean Henson



Mildred Lyons
+
Dorothy Clark



Heritage Days - Dec. 1998

Sean Henson, Alice Reed
+ Elizabeth Sumner





John Korycki



Trudy Edwards



Christmas - 1998

Peay Pattillo & Husband
Sean Henson



Terry Newberry
& husband



Carol Hart,
Cathy Foley,
Pam Bellman

Marie Jones





The following men were called up front: Ozzie Beasley, Ed Clark (Not present), Craig Henson, John Korycki, Harry Newberry, Dick Sherman, Ron Barber and Dave Pattillo. They were presented Honorary Wings of the Floral City Garden Club and named the "Gardening Angles". This presentation was in recognition of the cooperation and assistance given the Club the past year. The presentation added alacrity to the meeting.



Entertainment-
"Floraletts" of
Floral City





Marcia Beasley -
Gift Table

Dorothy Clark
Mary Pritchard
John Andrew
+ John Korycki



Terry Newberry
+ husband



Glenys Phillips
+ husband



Elaine Reynolds, Dorothy
Sherman

FLORAL CITY GARDEN CLUB

Holidays are over, but not before memories are made from them

By Dorothy Clark

The holidays are over now. The holiday meeting at the Singing Forest Recreation building was very nice with a delicious potluck luncheon.

The four very talented Floralettes from the Sweet Adelines entertained us beforehand with their barbershop style of melodies.

Mary Pritchard, Alice Reed, Janis Lehowicz and Elizabeth Sumner were the hostesses.

President **Peggy Pattillo** recognized **Ozzie Beasley, Ed Clark, Carl Henson, Clyde Edwards, Harry Newberry, Dave Pattillo and Dick Sherman**, calling them "Gardening Angels." She presented them with their "wings." These husbands of garden club members have been available often to help with garden club projects. After a short meeting, members exchanged gift plants.

There is not too much to do in the garden in January.

It is the last chance to plant carrots, onions, turnips, cabbage and lettuce. They all like cool weather. Some annuals that are the most cold-hardy are pansies, petunias, snapdragons, calendulas and verbenas.

It is not too late to plant them. Fertilize them regularly and keep the dead flowers picked off for continuous blooms. January is also the best month to transplant oak trees.

I planted two Mexican sunflowers this past summer. They grew to be about 10 feet tall and took up a lot of room, but they have been spectacular these past two months and still have a few blooms yet in January. They will root from cuttings. My *Cassia bicapsularis* are also still blooming later than other years.

The next meeting will be at **Jeanne Henson's** on Friday, Jan. 8 at 1 pm. Hostesses will be **Jeanne and Carol Hart**. January is the club's Birthday Tea when members put a penny in the pot for each year of their life. The program of the day will be a walking tour of several gardens in the immediate neighborhood. Quite a few members live in the same area.

Jeanne will have a grow and share table set up so, members, bring your extra plants, seeds, cuttings and bulbs to share. Guests are always welcome. Call 344-2339 for information. Remember — "Strangers are just friends that you haven't met yet."

Jan. 99

FLORAL CITY GARDEN CLUB

By Dorothy Clark

The January meeting at **Jeanne Henson's** house was very well attended. Twenty-eight members were there. Mother Nature did not cooperate, though. It was right after the freeze, leaving all of our yards looking desolate. Jeanne had set up a "grow and share" table in the back yard where everyone could take bulbs, cuttings and some plants. So all was not lost.

Jeanne is to be commended for her monthly Newsletter that she

sends out to all the members. Also, we appreciate **Jo Ann Quackenbush's** monthly horticulture letter with her DO's and DON'Ts of the month, like: "Don't cry, the January 6 freeze was the worst in over 3 years. You may lose some plants but many will come back from the roots. Hope you took some cuttings to replace the plants that you do lose. DO recycle Christmas trees and foliage for good mulch, small limbs for plant-stakes and newspaper (only black and white) can be shredded and

composted. Trunks and long branches for tent frames for tender plants to protect them from frost."

Our Jr. Gardener program with 12 Floral City School fourth-graders is well under way with the direction of **Mary Pritchard**. This month, they will be planting seeds for their Butterfly Garden that is to be planted at the school. **Patti Barber** is working on that.

Later this month, we may be able to prune back the plants that were

Please see **CLARK**, Page 60

CLARK

continued from Page 5D

freeze-damaged. It all depends on the weather. Dead annuals and dead chrysanthemum stalks can be removed now. The new little mum plants can be separated at this time and shared with other gardeners.

In March, we will be having a field trip to Kanapaha Botanical Gardens in Gainesville. We will be stopping on-route for lunch at the Ivy House. Guests are welcome. Mark your calendar now for Friday, March 12.

The February meeting will be interesting too. On Friday, Feb. 12 at 1 p.m. we will meet at **Cathi Ayre's** "Shadowbirth." They have turned the cottage into a "Bed and Breakfast." Hostesses besides Cathi will be **Cathi Foley** and **Lynn Bassett**. The program will be a tour of "Shadowbright" with a question-and-answer period.

There will be a "Grow and Share" table at this meeting. If interested in attending this meeting, please call Cathi at 341-0546 for directions. Hope to see all of you there.



Caryl Hart, Alice
Reed + Betty Summer

Celebrating Arbor Day



Dorothy Sherman, Marie Jones, Glennys Phillips,
Elaine Reynolds, Peggy Pattillo, Terry Newberry,
Frances Simpson, Dorothy Clark & Carol Hart



Jan. 15th, 1999

CITRUS TIMES

FRIDAY ■ JANUARY 22, 1999

Floral City seeks vision for future

■ Citrus 20/20 offers to help the Floral City Heritage Council prepare a spring visioning workshop.

By BARBARA BEHRENDT
Times Staff Writer

LECANTO — As Floral City residents fought the state last year to keep their historic neighborhood from being split by a four-lane highway, they found that individual voices had little impact on the bureaucracy.

They also discovered differing views among their neighbors that fur-

ther diluted their efforts.

The road project is on hold now, but the experience has convinced some that Floral City needs a single vision of what the community should be.

They also think Floral City needs to act with one voice backing up that vision not just to fight the next threat to the community, but to take positive

steps to move Floral City toward the direction the community wants.

Late Wednesday, Marcia Beasley of the Floral City Heritage Council appeared before the board of directors of Citrus 20/20, the group formed after a countywide visioning effort in 1995. She was seeking help to organize a visioning meeting for Floral City sometime this spring.

"We think that Floral City is certainly ready to have a Vision 20/20

Please see **FLORAL CITY** Page 8

Floral City

from Page 1

workshop," Beasley told the group, recounting portions of the difficult fight with the state Department of Transportation over widening U.S. 41 through the commercial district.

"Floral City is a unique little town," Beasley said. "We have no large developments in Floral City at all. We're not incorporated, we have no civic association, we have no individual Chamber of Commerce or a large commercial area like, say Homosassa. . .

"What we do have is a real sense of history and nature there, and we certainly want to preserve that," Beasley said.

Through the Heritage Council, which is affiliated with the Citrus County Historical Society, Beasley and others have already begun initial planning for a vision workshop at the fellowship hall of the Floral City Methodist Church.

The plan is to involve as many different groups in Floral City in the discussion as possible although the Heritage Council has been the most active in the historic preservation aspect, she ex-

plained.

Citrus 20/20 officials offered their help to Beasley and her group and warned her that her task would be a large one.

Citrus 20/20 board member Avis Craig, who was a chief organizer of the county's visioning effort, told Beasley that she had much to do to get the Floral City group ready for a workshop by spring. She also noted that the county visioning process included some keynote speakers who provided good information for the participants.

Beasley noted that her group has also already begun thinking about speakers. One is set to speak on the importance of creating a sense of place at the Floral City Community Building at 7 p.m. Tuesday.

James Moore of the Florida Humanities Council speakers bureau will set the stage for the upcoming visioning process by speaking about "Architecture and its Effects on Community." The program, which is open to the public, is sponsored by the Heritage Council.

Moore is an associate professor in the School of Architecture and Community Design at the

University of South Florida.

Beasley said Moore has spoken to the Historical Society before.

"His emphasis is on developing the sense of place and how the design of a community affects the way we live," Beasley said.

Many county and community officials have been invited to the meeting since it is really the first detailed account the council will give to the community about the visioning effort.

On Thursday, Beasley said she is looking forward to seeing all the good things a cohesive community vision could bring to Floral City.

The main roadway through Floral City was designated a historic district and was placed on the National Registry of Historic Places in December 1993. It remains the only registered historic district in the county.

But simply recognizing the historic significance isn't enough, Beasley noted. She said she hopes the unified voice also provides an additional push for protection.

"This is really another step in that process," she said. "That is the whole basic purpose of the visioning in Floral City for 20/20 . . . so that everyone has a say in what this community should look like."



Meeting at Shadowbright
Feb. 12, 1999





Dorothy Colarusso,
Frances Simpson



Cathi Ayres



Gathering for trip to
Kanapaha Botanical Gardens
in Gainesville



Pond at
Knapaha Botanical
Gardens



Frances Simpson
+ Pattie Barber



Janis
Lehowicz
+ Carol Hart

Dinner at
Ivy House



JoAnn Quackenbush
Cathi Ayers
Pam Bellman



Cathy Foley



Pam Bellman
+
Mother



Cathy Foley,
Barbara Milliken



Glenys Phillips
Dorothy Clark



Pattie Barber



JoAnn Quackenbush
Cathi Ayers
Pam Bellman



Cathy Foley



Pam Bellman
+
Mother



Marcia Beasley



Janis Kowicz
Alice Reed
Betty Sumner (Sisters)

Annual Plant
Sale Mar. 27, 1999



Terry
Newberry





Putting in the
walkway in
Men's Garden







April 9, 1999
Dorothy Clark's House





Blossoming effort

May 4, 1999



Special to the Chronicle
The green-fly orchids cover the big live oaks that arch over the road at the historic Yulee Sugarmill site in Old Homosassa. But that's not the only place to find them. There are green-fly orchids in about 90 percent of the old live oak trees in Citrus County.



Special to the Chronicle
The showy red flowers of the scarlet ladies tresses make them one of the most popular native orchids in Citrus County.



Matthew Beck/Chronicle photo
Ocala botanist Paul Martin Brown has identified 36 species of orchids in Citrus County.

Botanist finds 36 kinds of orchids in Citrus County

ORCHIDS

Looking for a new reason to explore Citrus County?

Ocala botanist Paul Martin Brown has 36 of them.

According to Brown, Citrus County is home to 36 species of orchids, only one of which is non-native.

Florida is home to about 110 species of native orchids.

Since Brown started studying Florida's orchids almost two years ago, his research has brought him to the backroads and backwaters of Citrus County. But not all the wild orchids in this area are inaccessible, and many will soon be in bloom.

Brown and botanical artist Stan Folsom are currently working in conjunction with the University of Florida to create the first field guide to the wild orchids of Florida. Brown said this should be

available in two to three years.

Brown and Folsom have already written an illustrated field guide to the wild orchids of the Northeastern United States.

For flower enthusiasts who don't want to wait for the book, Brown shared some of his favorite spots to find orchids in Citrus County.

According to Brown, the green-fly orchids, *Epidendrum conopseum* var. *conopseum*, are epiphytic, or tree-growing. Brown said they cover the big live oaks that arch over the road at the historic Yulee Sugarmill site in old Homosassa. But that's not the only place to find them. Brown said there are green-fly orchids

in about 90 percent of the old live oak trees in Citrus County. He said they should start blooming around the first of June. The flowers will just be hanging off those tree limbs, he added.

Brown said the damp meadows along U.S. 19 are home to several species of ladies tresses. Brown said two species of ladies tresses occupy the same habitat. When they're in bloom, they look like little white twisted spikes on the roadside. Brown said they bloom in the spring and fall.

Lecanto is an orchid hot spot, especially in the Withlacoochee State Forest. Brown said.

There will be other species

"They're very elusive, they're very tiny, and they're very beautiful."

Brown said although he has begun searching for these orchids in the Pineola Grotto area southeast of Floral City, he hasn't been able to photograph any of them in bloom yet.

The best way to explore this area is on the Rails to Trails of the Withlacoochee. Brown said the bike trail goes through the Pineola Grotto area.

Fort Cooper State Park is another good place for orchids, especially around the phosphate pit where the soils very rich. Its such a pleasant and accessible area. I wouldn't be surprised if two very rare *Triphoris* show up there. The habitat is excellent for them, Brown said.

The park should also be a good place for the summer-blooming rein orchids. But those who aren't afraid to hoof it a little might want to explore the Flying Eagle Ranch near Lake Tsala Apopka owned by the Southwest Florida Water Management District.

Brown said this land is open to foot traffic only.

It's a huge piece of land and the potential is phenomenal. It has in it two real specialties, the Florida butterfly orchid *Encyelia tampensis*, blooming in June, and the jingle bell orchid *Harrisella porrecta*.

Brown explained that the plant has tiny, orange flowers that hang from the plant like little jingle bells.

The jingle bell orchid usually grows in southern Florida. Brown said the protected cove area keeps this orchid from being killed off by winter frosts.

According to Brown, orchids are different from all other plants because the shape of the flower is different. An orchid has three sepals and two petals. The lip of the orchid is the big, showy part of the flower. This is the landing platform for pollinators.

Brown said that all other flowering plants also have separate male and female structures, stamens and pistils. But orchids have the male and female structures together in one column.

The orchid family is the largest plant family in the world, with 30,000 species. It's a family that's still evolving. New species are being selected every day, primarily in the tropics where life moves very fast. But it's still happening here. We're still finding new things in temperate North America, Brown added.

According to Brown, there are currently at least three totally new, undescribed species of orchids growing in Florida.

A warning to native orchid enthusiasts: Collecting or picking most species of native orchids is prohibited.

CHECKLIST OF CITRUS COUNTY ORCHIDS

1. *Calopogon barbatus* — bearded grass pink
2. *Calopogon multiflorus* — many-flowered grass pink
3. *Calopogon pallidus* — pale grass pink
4. *Calopogon tuberosus* — common grass pink
5. *Corallorhiza wisteriana* — Wister's coralroot
6. *Encyclia tampensis* — Florida butterfly orchid
8. *Epidendrum conopseum* var. *conopseum* — green-fly orchid
- 8a. *Epidendrum conopseum* var. *mexicanum* — bronze green-fly orchid
9. *Habenaria odontopetala* — tooth-petalled rein orchis
10. *Habenaria quinqueseta* — Michaux's orchid
11. *Habenaria macroceratitis* — long-horned rein orchis
12. *Habenaria repens* — water spider
13. *Harrisella porrecta* — jingle bell orchid
14. *Hexaletris spicata* — crested coralroot
15. *Malaxis spicata* — Florida adder's-mouth
16. *Mesadenus polyanthus* — many-flowered ladies'-tresses
17. *Platanthera cristata* — orange crested orchid
18. *Platanthera flava* var. *flava* — tubercled orchid
19. *Platytheles querceticola* — low ground orchid
20. *Pogonia ophioglossoides* — rose pogonia
21. *Ponthieva racemosa* — shadow-witch
22. *Pteroglossaspis acristata* — crestless plume orchid
23. *Sacoila lanceolata* var. *lanceolata* — scarlet ladies'-tresses
24. *Spiranthes brevibras* — short-lipped ladies'-tresses
25. *Spiranthes eatonii* — Eaton's ladies'-tresses
26. *Spiranthes floridana* — Florida ladies'-tresses
27. *Spiranthes laciniata* — lace-lipped ladies'-tresses
28. *Spiranthes longibras* — long-lipped ladies'-tresses
29. *Spiranthes odorata* — fragrant ladies'-tresses
30. *Spiranthes praecox* — spring ladies'-tresses
31. *Spiranthes tuberosa* — little ladies'-tresses
32. *Spiranthes vernalis* — grass-leaved ladies'-tresses
33. *Triphora craigheadii* — Craighead's nodding pogonia
34. *Triphora rickettii* — Rickett's nodding pogonia
35. *Triphora trianthophora* — three birds orchid
36. *Zeuxine strateumatica* — lawn orchid*

Exceptions are sometimes made if the plant is about to be destroyed by construction, but permits from the state and permission from the landowner must be obtained. In Brown's extensive field research, he said he always obtains permission from landowners before searching private land for native orchids. Before Brown sets off on his plant-hunting excursions, he said he also always wears

of ladies tresses there and the genus *Triphora*, which is the nodding pogonia, he explained.

The ladies tresses should be in bloom now, and the nodding pogonias should bloom in late June. Brown suggested that wild orchid enthusiasts start by hiking along the Withlacoochee State Trail because there are orchids that should be in bloom almost year-round.

The wet areas of the forest and damp roadsides create perfect habitats for grass pinks and rose pogonias *Pogonia ophioglossoides*. Most people have seen them and not realized they were orchids, Brown said.

But the most highly sought-after orchids in Citrus County, Brown said, are the big scarlet ladies tresses *Sacoila lanceolata* var. *lanceolata*, also known as the leafless beaked orchid.

That is big and that is showy and that's hard to find. Brown said many of these native orchids have been transplanted by over-zealous gardeners.

Scarlet ladies tresses grow well in open pine flat wood areas, as do some of the fringed and crested orchids, especially the orange crested orchid *Platanthera cristata*. This orchid begins blooming in June.

Brown said he looks for these kinds of orchids along U.S. 19 and on vacant lots.

One of the rarest orchids in Citrus County is the three birds orchid *Triphora*. Brown said these flowers are very hard to find because they bloom for only a few days every year.

a low Wellington boot and carries a walking stick in case he encounters any problematic reptiles.

For more information about native Florida orchids, contact Paul Martin Brown at (352) 861-

2565, or e-mail him at nsorchid@aol.com.

For more information on state regulations about native plants, call Florida's Division of Plant Industry at 726-5578.



Installation
of
Officers
at T.J. Michaels

Peg Pattillo, Jo Ann
Quackenbush, Marie
Jones, Marcia Beasley



Kathi Ayers
Jo Ann Quackenbush
Marie Jones, Peg Pattillo

FLORAL CITY GARDEN CLUB

Butterflies were the theme
for new installation lunch

By Dorothy Clark

TWENTY MEMBERS ATTENDED the May 14 installation luncheon meeting at T.J. Michael's restaurant. **Marcia Beasley**, a past president, was the installing officer, using a butterfly theme. She presented each nominee a picture of a different butterfly, applying the characteristics of that butterfly to the duties of a particular office.

New officers installed for the next two years were: President **Marie Jones**, First Vice President **Cathi Ayres**, Second Vice President **JoAnn Quackenbush**, Secretary **Janis Lehowicz** (with **Dorothy Clark** alternating for September and October), and Treasurer **Patsy Neel**, who was voted in at this meeting instead of **Dorothy Colarusso**, who declined the office for health reasons.

Yard of the year co-chairmen **Pam Bellman**, **Cathy Foley** and **Cathi Ayres** announced the winners for this year. There was a presentation at 8:30 a.m. at the Community Building on Friday, May 20. Top award was given to **JoAnn Quackenbush**. This year two other awards were given — to **Cathy Foley**, for creative design and sustained yard of the year to **Cathi Ayres** for Shadow bright. Five Ferris Court homeowners were each given a framed certificate of a Neighborhood Enhancement Award in recognition for each one of them planting a section of the flower bed on the island of the cul-de-sac. Certificates for landscaping improvement were also presented to **Mr. and Mrs. Sudheiner** and **Mr.**

and **Mrs. Herzog**.

Lynn Bassett attended her first District meeting on April 27 in Newberry. She took my place with the exhibit I'd prepared on Amaryllis as the new District Horticulture chairman, when I was unable to go. **Mary Pritchard** was there also with her exhibit on World Gardening, of which she is the new District chairman. **Lynn** gave a very good report of the District meeting. She was most impressed with it and with our new District chairman, **Andrea Fuller**, from Inverness Garden Club.

Marcia Beasley thanked outgoing President **Peggy Pattillo** for the good job she has done these past two years as she presented her with the Petal Power Award for this month. She also gave her her past President's pin.

Plant of the month was an orchid, which was won by **Cathi Ayres**. How to foil the bunnies: Before this, as soon as the beans came up, the bunnies got them. So, this spring, I planted six pole beans around the dormant crepe myrtle in the front flower bed. We've had four meals of beans so far and many more coming. Also, in the back yard, in a large pot, I planted four more and trained them up on long branches. They are also doing well. Now, the bunnies are eating the lettuce.

This is my last column. I can't remember how long I've been writing this, but it has been quite a few years. Thank you to all of you who have told me that you enjoy it. I'm sure that you will enjoy **Peggy Pattillo**, too. She will be taking over in the fall.



Pres. Marie Jones
1st Vice Pres. Cathi Ayres
2nd Vice Pres. JoAnn Quackenbush
Secretary Janis Lehowicz
Treasurer Patsy Neel



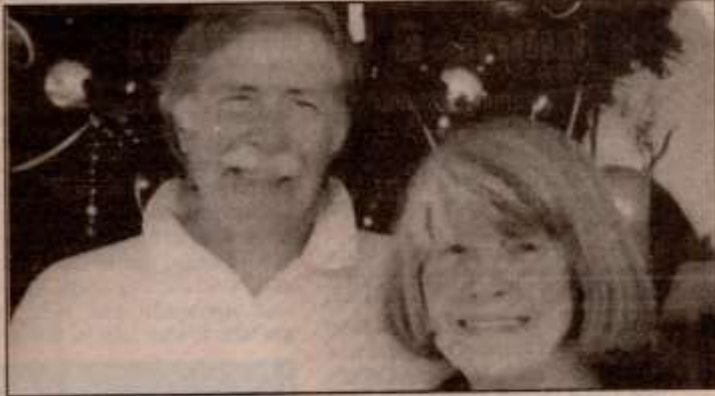


Installation Banquet
Mar 14, 99 at T.S. Michaels



ANNIVERSARY

THE PATTILLOS



The Pattillos

David and Peggy Pattillo of Inverness recently celebrated their 50th wedding anniversary at Winter Park.

Married in December 1949, the Southern California college students planned a large formal wedding for Christmas Eve, but surprised everyone by eloping to Yuma, Ariz.

Mr. Pattillo is a former vice-president of Lennen and Newell, a Madison Avenue, New York marketing and advertising agency, and manager of their Seattle/Tacoma office. He was CEO of Interact Inc., a marketing and design firm in Palm Beach, specializing in architectural product development.

Mrs. Pattillo was a management executive with Saks Fifth Avenue in Palm Beach. She was a fashion designer and owned the Ampersand Boutique and Gallery in Hobe Sound, and was an account executive with Creative Partners Inc., a West Palm Beach advertising agency.

Both Mr. Pattillo and Mrs. Pattillo have volunteered many

hours in community service in both Florida and Washington State. They have lived in Florida for 30 years, of which 10 years have been in Inverness. In 1994, they were selected Citizens of the Year by the Citrus County Chronicle and the Citrus County Chamber of Commerce, for their work with the Inverness Community Redevelopment Agency, and the Taste of Citrus fund-raiser for the Central Florida Community College. Mrs. Pattillo recently completed a two-year term as president of the Floral City Garden Club, and continues in her volunteer activities. Mr. Pattillo is now involved in historical research and exploration of early Spanish Florida, and has recently completed a book on that subject.

The couple has three children, Melissa Chaple of Lake Worth, Suzanne Barcza of Palm Harbor, David Patrick Pattillo of New York City, N.Y., and two grandchildren, Graeme Chaple of Minneapolis, Minn., and Alexandria Chaple of Lake Worth.

Retiring President
and Husband
Celebrate 50th
Wedding Anniversary



MEMBERS GATHER FOR YEAR BOOK PLANNING

Top: Cathy Ayers, Patsy Neel, Dorothy Clark and Jo Ann Quachenbush
Middle: Jo Ann Quackenbush, Terry Newberry and Barbara Milligan
Bottom: Marcia Beasley, Lynn Bassett and Cathi Ayers



Best for the year

July 6, 1999



Special to the Chronicle

Floral City Garden Club members recently presented the club's "Best Yard of the Year" award for outstanding garden design and presentation. From left, are: club president Peggy Pattillo; award winners Don and JoAnn Quackenbush; Terri Newberry; Patricia Neel; event chairman Pamela Bellman; and club members Jeanne Henson and Dorothy Sherman.



Outstanding gardening

Special to the Chronicle

Floral City Garden Club's "Outstanding Sustained Gardening" Award has been presented to Cathy Ayers, owner of "Shadowbright," a bed and breakfast in Floral City. Members of the club are, from left: Jeanne Henson; Terri Newberry; event chairman Pamela Bellman; Patsy Neel; award recipient Ayers; club president Peggy Pattillo; Blaine Parlaman; JoAnn Quackenbush and Dorothy Sherman.

Yard design

July 4, 1999



Special to the Chronicle
Floral City Garden Club's "Best Creative Yard Design" has been awarded to Cathy Foley for her landscaping efforts at her Swiss chalet in Floral City. Pictured, from left, are: JoAnn Quackenbush, Dorothy Sherman, Pamela Bellman, Terri Newberry, Carol Hart, Peggy Pattillo, Patricia Neel and Jeanne Henson.









Jo Ann Quackenbush has a huge variety of plants in her Floral City yard. She was recently named to have the best yard in 1999 by the Floral City Garden Club.

Blossoming effort earns award

By Erin Rogers
Staff writer

Floral City resident Jo Ann Quackenbush considers gardening therapeutic, a hobby that gets people close to God.

"I think everyone has a desire to return to Eden," she said.

Quackenbush's Eden is her back yard, a garden full of wild and domestic plants.

The garden earned Floral City Garden Club's best yard of the year award in June. Quackenbush is the club's second vice president and wildflowers/native plants chairwoman.

Since she was a child, Quackenbush has loved gardening. "I used to pick flowers from

“I think everyone has a desire to return to Eden.”

Jo Ann Quackenbush

my grandmother's garden and put them in my sandbox," she said.

She and her husband, Don, moved to Floral City from Clearwater five years ago.

Now retired after working for GTE for 27 years, Quackenbush can spend as much time she wants in her garden — usually a good eight hours a day, according to her husband.

"It's nice that she doesn't have to work and has time to do this,"

Don Quackenbush said. "She deserves this."

Quackenbush calls her garden half wild and half tailored. She tries to incorporate all she can into it, even plants that grow from seeds dropped by birds.

"I really like native plants and wildflowers," she said.

Some plants she includes in her garden are scarlet milkweed, lantana, goldenrod, blue iris, tropical sage, dotted horsemint and elephant ears. The number of species she grows is more than she can say.

Quackenbush wakes up early so she can work in her yard before the temperature is unbearable

Please see **GARDEN**, Page 4D

GARDEN

continued from Page 1D

outside. She likes to garden by the inch, gradually expanding her garden, yet always keeping tabs on the original plants.

When the Quackenbushes first moved into their home, their yard was bare except for grass. Now greenery, flowers and a vegetable garden fill the space.

"I figure in a couple of years we'll be able to cut the grass with scissors because she keeps expanding," her husband said.

"She'd love to sell this place and have 10 acres for a botanical garden."

Quackenbush does a lot for the Floral City Garden Club while she is not working in the yard. She intends to design a Web page for the club soon, which would enable people to find out about plants that grow in the area.

The site would contain links to the University of Florida and the University of South Florida, where plant encyclopedias are available online.

Floral arrangements are another hobby Quackenbush enjoys.

She makes them out of silk and dried flowers, and even prepared the arrangements for her sister's wedding.

One of Jo Ann Quackenbush's favorite plants is cat's whiskers, which blooms in late spring through late fall. When she and her husband, Don, first moved into their home, their yard was bare except for grass. Now greenery, flowers and a vegetable garden fill the space.



TRIBUTE TO DOROTHY COLARUSSO

DIED JULY 17 1999

WE FIRST MET DOROTHY WHEN SHE JOINED THE FLORAL CITY GARDEN CLUB
IN 1982. SHE BECAME AN ACTIVE MEMBER SOON AFTER, SERVING 2YRS.
AS VICE PRESIDENT AND THEN WAS ELECTED AND SERVED AS TREASURER FOR
THE NEXT 14 YEARS. WHEN HER HEALTH DECLINED SHE RESIGNED BECAUSE SHE
COULD NO LONGER FULFILL HER DUTIES TO HER SATISFACTION, WHICH WAS
THAT OF PERFECTION.

SHE WAS MANY THINGS TO FAMILY AND FRIENDS, BUT FOR ALL THE BEGINNINGS,
THERE MUST BE ENDS.

HER STAR ROSE HIGH, LIKE THE SUN AT NOON, AND LIKE LOVELY SUNSETS ENDED
TOO SOON.

SHE WAS DIVERSIFIED IN THOUGHT AND DEED. WORKING OUTDOORS, INDOORS,
WHEREVER, THERE WAS NEED. AND THEN ONE DAY IN JULY LEFT FOR A BETTER
WORLD WITH A LAST GOOD-BY.

SHE WOULD NOT WANT US TO SIT AND MOURN BUT TRY TO REMEMBER WHY SHE
BORN. TO BE A "DO-ER" AND BRING SOME DELIGHT TO THOSE FOR WHOM SHE
MADE THIS WORLD SO BRIGHT. AND SO WE THE MEMBERS OF THE FLORAL CITY
GARDEN CLUB SAY GOOD-BY TO OUR DEAR FRIEND DOROTHY IN THE KNOWLEDGE
THAT SHE IS NOW ONE OF THE BLOOMS IN GODS HEAVENLY GARDEN

County submits programs for awards

The National Association of Counties (NACo) is sponsoring Acts of Caring Awards that honor programs in which volunteers work together with county government for the benefit of the community.

The Citrus County Division of Extension Service, Library Service, Parks and Recreation, and Solid Waste Management have submitted programs to the National Association of Counties for consideration.

The Division of Extension Services has submitted the Master Gardener Program as its Acts of Caring Award nomination. The Master Gardener Program utilizes individuals who have completed an intensive, research-based 55-hour horticulture course taught by the Citrus County Extension Office. In exchange for the training, the volunteers pledge 50 hours of work within a year's time. Over the course of a year, 40,385 volunteer hours have been contributed.

The Floral City Garden Club has provided all plants, ground cover, hardware, benches, labyrinth bricks and other items needed to create a unique addition to the library.

The Memorial Garden and labyrinth at the Floral City Public Library is the program submitted by Library Services. In the early 1990s a garden area was created adjacent to the library. The Floral City Garden Club has provided all plants, ground cover, hardware, benches, labyrinth bricks and other items needed to create a unique addition to the library. Patrons may wander through the garden, enjoy a book or indulge in bird watching.

The Division of Parks and Recreation has named the Central Ridge District Park Development Partnership as its application for an Acts of Caring

Award. This partnership has joined together the Central Citrus Little League and the County in planning four ball fields within the 133-acre park. The County purchased the land, and is responsible for the basic infrastructure. The league cleared the site, completed the four ball fields, and is constructing the restroom/concession/storage building. To accomplish this feat, the Central Citrus Little League raised money and donations of labor and materials from area businesses and residents. Once complete, the Central Ridge District park will be the home to more than 500 children ready and willing to "Play

Ball!"

Solid Waste Management has submitted the Residential Recycling Drop-off Program as its entry for an Acts of Caring Award. This program combines 13 volunteer organizations, approximately 200 individuals, and county staff to set up and monitor 14 drop-off centers throughout the county. This program provides an easy way for residents to recycle their plastic, glass, aluminum, steel and newspapers. Each volunteer organization is responsible for a certain site. They provide daily monitoring and clean up of illegal dumping and make arrangements for county staff to come out and empty the bins. The organization receives 80 percent of the revenue from the recycling.

The goal of the NACo Acts of Caring Award is to enhance the community through partnerships between volunteers and county government staff. Citrus County is accomplishing this through the programs described above.

OBITUARIES

Dorothy Colarusso, 89, of Floral City

Dorothy A. Colarusso, 89, of Floral City, died Saturday, July 17, 1999, at her home under the loving care of her family and Hospice of Citrus County. She was born in Ashland, Ohio, on May 13, 1910, to the late Nicholas and Mary Schuster Diederick and moved here from Orlando in 1981. Mrs. Colarusso retired as manager of the Colonial Plaza Shipping Center of Orlando with 15 years of service. She was a member of the Floral City Garden Club, where she served as treasurer. She belonged to Our Lady of Fatima Parish. Mrs. Colarusso was preceded in death by her husband, Patrick J. Colarusso, who died May 9, 1987.

Surviving are her brother and sister-in-law, Oliver H. and Leona Diederick of Floral City and several nieces and nephews.

Chas. E. Davis Funeral Home, Inverness.



In Loving Memory of

DOROTHY A. COLARUSSO
1910 - 1999

RESURRECTION PRAYER

MOST merciful Father, we commend our departed into your hands. We are filled with the sure hope that our departed will rise again on the Last Day with all who have died in Christ. We thank you for all the good things you have given during our departed's earthly life.

O Father, in your great mercy, accept our prayer that the Gates of Paradise may be opened for your servant. In our turn, may we too be comforted by the words of faith until we greet Christ in glory and are united with you and our departed.

Through Christ our Lord. Amen.

CHAS. E. DAVIS FUNERAL HOME
With Crematory
Inverness, Fla. 726-8323

Olin Simpson, 97, of Floral City

Olin Leonard Simpson, 97, of Floral City died at home on Dec. 27, 1999, under the loving care of his family and Hospice. Born in Quitman, Ga., on Sept. 17, 1902, to the late Sherrod and Georgia Simpson, he came to Citrus County 26 years ago from Miami where he owned and operated Simpson's Auto Service in Allapatta. He was an active member of the Church of Christ and a charter member of the Allapatta Lions Club.

He is survived by his wife of 60 years, Frances Webb Simpson of Floral City; two sons, Wells Leonard Simpson of Eufaula, Ala.,

and Ronald Olin Simpson of Charlotte, N.C.; one daughter, Iyra Carson of Marietta, Ga.; one sister, Lena Welliever of Rocksville; seven grandchildren and four great-grandchildren.

Chas. E. Davis Funeral Home, Inverness.

Friday
August 27, 1999

Garden club buds with plans

The Floral City Garden Club will conduct the first meeting of the year on Friday, Sept. 10, at the Floral City Community Center, according to the club President, Marie Jones.

The meeting will consist of the announcement of committee appointments, workshops, programs, trips, projects, other events planned for the year and distribution of the club year books for 1998-2000.

The Hospitality Committee, headed up by First Vice President, Cathi Ayers, will be on hand to welcome members and guests as they arrive.

Members of this committee are Peggy Pattillo, Terri Newberry, Frances Simpson and Suzanne Hennessy.

This month's hostesses who provide refreshments for the 1 p.m. social hour are Glenys Phillips and Terri Newberry and the fund-

raising raffle will be handled by Cathy Foley.

Other meetings will take place in members' homes, except for the annual Christmas potluck luncheon and party that is traditionally at the Singing Forest Clubhouse.

The focus of the club this year will be education with participation. Visitors are always welcome. For further information, contact Marie Jones at 344-0860.

District V Meeting Oct 20, 1999
at Andre's



2nd Row standing → Patsy Noel, Pam Bellman,
Glenys Phillips, Marie Jones
1st Row seated → JoAnn Quackenbush,
Dorothy Clark, Patti Barber, Peggy
Pattillo, Mary Pritchard



Sa Ann Quack and us,
Dorothy Clark,
Patty Barber



Dorothy Clark
(middle background)
& display as
horticulture chairman Dist II



Glenys Phillips
& Marie Jones

Oct. Meeting at
Patsy Neels
Making small
wreaths to sell in Dec.

Dorothy Clark
Cathy Foley



Peggy Patti Ho
Pam Bellman



Denise Gustafson,
Sue Hennesy



Clockwise - Patty Barber
Glynis Phillips
Denise Gustafson



JoAnn Quackenbush



Joan Knippen

Make a Difference Day



To Ann Quackenbush



Ozzie Beasley,
Ron Barber



Replanting corner of City
Orange Ave, Old Floral City





Patty Neal, Ron Baker, Ozzie Beasley



Pontoon Flotilla Tour of Gardens is Nov. 12

By Peggy Pattillo

THE FLORAL CITY Garden Club will hold its November meeting at the home of **JoAnn Quackenbush**, winner of this year's "Best Yard of The Year" award, which will be presented by the club, Nov. 12 at 10 a.m.

This represents a change of meeting time for the group.

Hostesses for the day will be **Ms. Quackenbush** and **Peggy Pattillo**, working with club greeters **Cathi Ayers** and **Frances Simpson**. Members and guests are asked to bring a bag lunch. Coffee, tea and dessert will be served.

The day's activities will include a Pontoon Flotilla tour of wild flowers in bloom along the banks of the lakes and a guided tour of the Quackenbush award-winning gardens.

A Grow and Share table will be presented and members are encouraged to bring cuttings from the garden for propagation.

Nov. 30 is the date for work on

the downtown Floral City Christmas decorations, a Civic Development project under the direction of **Terri Newberry**, club chairman. Further information will be available at the meeting.

There will be no board meeting in December but the annual Christmas potluck luncheon will take place as usual at the Singing Forest Community Building.

November tips for gardeners are as follows: It is time to divide your day lilies, plant Easter (yes, Easter lilies, onion sets or onion seeds fertilize your vegetables and give your poinsettias a light shot for the coming Christmas season.

Happy Thanksgiving! (And where did summer go?)

Please call **JoAnn Quackenbush** at 344-9146 for directions to her home. Guests are invited, as always.

Peggy Pattillo regularly provides news of interest from the Floral City Garden Club for the Chronicle.









Cathi Ayers, Lynn
Bassett, Andrea
Fuller, Barbara
Milliken

11/12/99







Cathy Foley

+
50 Ann Quackenkush
start a
Butterfly Gardens



Decorate
the
Town



Glenys Phillips, Pam
Bellman, Terry Newbery
Lynn Bassett, Dorothy
Johnson, John Quackebush,
Dorothy Sherman



FLORAL CITY GARDEN CLUB

Annual potluck meeting scheduled for Dec. 10

By Peggy Pattillo

THE FLORAL CITY Garden Club will hold its annual Christmas Pot Luck meeting at the Singing Forest Recreational Building in Floral City at noon Friday, Dec. 10.

Hostesses for the event will be Garden Club members who reside at Singing Forest, chaired by **Mary Pritchard**. Each member is asked to bring a covered dish and a plant for the gift exchange.

Entertainment for the day will include Christmas songs by Floral City entertainer **Bob Figley** and a group sing-along.

Members are reminded that

Heritage Day volunteers acting as greeters and hostesses must wear suitable costumes. Cookie sellers must also dress of the period. Homemade cookies are to be delivered the day before to **Barbara Milliken's** home, three dozen per member. For directions to the Millikens', call 860-2722.

The Jan. 10 board meeting will take place as usual at the home of President **Mario Jones**. All members are invited to the open meeting. For information, call **Cathi Ayers** at 341-0546.

Peggy Pattillo writes news of interest of the Floral City Garden Club for the Chronicle.



Barbara Milliken,
Cathy Foley
Carol Hart



Alice Reed
Betty Sumner



+ Jani Stehowski



Marcia Beasley
+ husband



Cathi
Ayers

Dorothy Clark
+ husband



Entertainer
Bob Figley



Elaine
Reynolds



Terry
Newberry



Arbor Day
Tree Planting
Jan. 21, 2000





WEDNESDAY
FEBRUARY 9, 2000

Club designs with frost-proof foliage

Trimmed pittosporum, sago palm fronds or split-leaf philodendron can make good "line material" for a floral design, and these should have survived the recent freezes. Interested persons and Floral City Garden Club members are encouraged to bring their own fresh plant material to the floral design workshop.

The workshop is scheduled at 9 a.m. on Friday, Feb. 11, at the Floral City Community Building. Fresh flower material will be furnished and additional fresh plant materials will be available for those who do not have their own.

Everyone who plans to attend the workshop should bring a needle point holder, a shallow container not to exceed two inches deep, clippers, scissors and floral clay.

The monthly program presented by the club will follow the workshop at 12:45 p.m. Therefore, a bag

*Fresh flower material will be furnished
and additional materials will be available.*

lunch is appropriate if one plans to stay.

"Specialty Gardens" is the topic of the program to be presented by Larry Alta Villa, Florida Cooperative Extension Service. This is an opportunity to increase one's knowledge about bird and butterfly gardens, growing herbs for show and cooking and hydroponic gardening. Tired of covering tender landscape plants when temperatures dip to freezing? There is an alternative and Larry Alta Villa will give an overview of Xeriscape landscaping, grouping like-care plants together to conserve water. Also to be discussed will be plantings for the shade and how to develop a

water garden.

The afternoon program will provide visitors and members with an opportunity to win a potted plant. Refreshments will be provided by Dorothy Sherman and Carol Hart for the club's Annual Birthday Party. Members donate a penny for each year of their age.

Donations are always welcome for the Floral City Beautification Committee and memorials may be made to the club for the Community Memorial Garden.

Specific plant orders are now being taken for the Floral City Garden Club Annual Giant Plant Sale. This plant sale will take place on Saturday, March 24, at the Floral City Community Building. All residents are invited to place orders with Lynn at 341-0064.

For additional information about the club or club activities, please call President Marie Jones at 344-0860.



Flower
Show
Workshop

Marcia Beasley,



Dorothy Clark,
Mary Pritchard

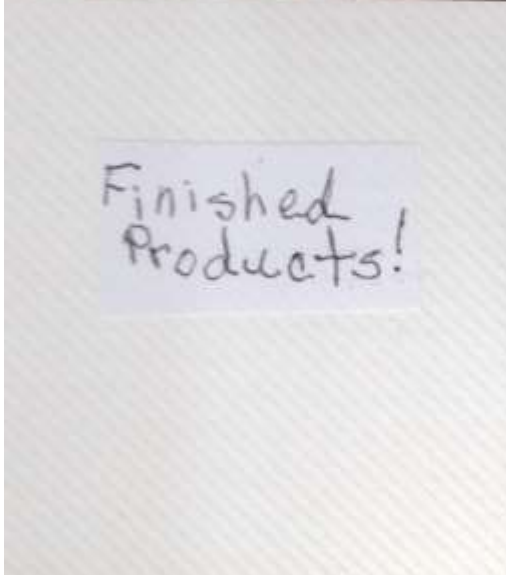


Marie Jones,
Jo Ann Quackenbush



Penise Gustafson,





The Simple Language Of Orchids

Native Orchids Of Florida

by Dr. Faye L. Granberry



The pronounced interest in native orchids of Florida was apparent when Paul Martin Brown and Stan Folsom spoke at the Sanibel-Captiva Orchid Society Holiday Gathering on December 20. Presenting their program before a standing room only the audience was spell-bound

for two hours.

Mr. Brown led the group through a botanical field trip, by slides, of one hundred wild orchids of Florida.

Each slide was greeted with more applause for the unusual beauty of our own native orchids. Brown's presentation spiced with humorous stories left the group of orchid lovers wanting to know more. He spoke fondly of the



Snowy orchid - *Platanthera nivea*

Fakahatchee Strand State Preserve of Florida as an absolute paradise with an unending number of exciting and beautiful species. Brown stated, "You may get a little hot or wet but that is no price to pay for the result of a day in the one of the most famous swamps." This is quite a contrast to the description of Susan Orlean of the swamp as a "green hell" in her famous book *The Orchid Thief*. The Three Birds Orchid, *Triphora trianthophora* brought the most response. This is a threatened wild orchid found in Florida and several

Paul Martin Brown, is currently a Research Associate at the University of Florida Herbarium and is conducting a 3-5 year study of the native orchids of Florida. One of the results of the study will be a field guide the orchids of Florida. He will be present a program on many of the 114 species native to Florida and will include information about recent taxonomic changes as well as a new species that will be published in the March issue of the North American Native Orchid Journal. Paul is the founder of the North American Native Orchid Alliance, editor of its Journal and, with his partner Stan Folsom, recently (1997), published *The Wild Orchids of the Northeastern United States* from Cornell University Press. He is also the author of numerous articles in a variety of publications, and often leads extended field trip to many of the worlds most interesting temperate orchid habitats. A native of New England, Paul now lives in Ocala, Florida.



Many-flowered grass pink -
Calopogon multiflorus

other states. Paul Martin Brown believes this is the most elusive orchid in the North East. In 1992 Philip Keenan described an albino form, which is pure white and has the green on the lip replaced by a pale golden yellow. The variety Mexican does not occur in the United States, unless Brown's endless research discovers one.

The word trianthophora, is a classic term meaning "bearing three blossoms" referring to the number of flowers borne by this species. It has a habit of being common in a locality one year and then rare the next year. The superficial stem, leaves and flowers are a brief stage in the development history of the Three Bird Orchid. This wild



Florida's dancing lady - *Tolumnia bahamense*

orchid can be found on logs rich in humus and leaf mold, of low hammocks, edge of swamps, near sea level to 10,000 feet in Guatemala. My favorite was the *Calopogon multiflorus*, "many-flowered" grass pink that was once widespread throughout Florida. They are a brilliant pink bloom in July. In the burned-over flat pinelands it is often the only evident herbaceous plant as it can send spikes of lovely flowers up through the fire-blackened earth with vigor. From an ecological viewpoint this species is of

interest as it will survive surface fires.

Stan Folsom, formerly of Boston, is retired after thirty-eight years of teaching art. He paints the wild orchids that he and Paul Martin Brown find and record. Their work together shows enthusiasm, and the need to record on the spot a history of each orchid.

The lecture ended with several breath taking pictures of the Ghost Orchid. I was pleased to hear him say he had never in his travels in Florida encountered a water moccasin.

For the person who seeks to find these regal flowers in their native haunts, refreshing adventures wait in Florida in the swamps, along our highways, grave-yards, flatlands; pine barrens, among Saw Palmettos and maybe in our own backyards.☘

Dr. Granberry is President of the Sanibel-Captiva Orchid Society. She is a well-known Orchid hobbyist lecturer, writer, and a Master Gardener. She holds a B.S. degree in Horticulture and graduate degrees in Psychology.

Club to meet in 'Best Creative Yard'

By Marie Jones
Special to the Chronicle

Down a country roadway and up a wooded lane sits a Swiss chalet with a goldfish pond nearby.

This is the residence of Floral City Garden Club member, Cathy Foley.

It will be the setting for the club's meeting at 12:45 p.m. today.

Members and guests will be greeted by Sue Hennessy and Cathi Ayers. Refreshments will be served by Cathy Foley, assisted by Barbara Milliken.

Following the roll call, Larry Alta Villa of the University of Florida Cooperative Extension Service will present a program concerning "Pest Management and Fungus Control."

He will be joined by Thomas Hewlett discussing biological control of nematodes.

A monthly fund-raiser will be conducted by Patsy Neel and Pattie Barber.

Members are encouraged to bring their cuttings, seeds and bulbs for the Grow and Share Table.

After a brief business meeting, members and visitors will be invited to tour Foley's yard. It was named the Best Creative Yard of the Year for 1999.

Weather permitting, the program will be held outdoors, so everyone should bring a lawn chair.

The following week, the quarterly Adopt-A-Highway cleanup will take place. Helpers will meet at 9 a.m. on Friday, March 17, at the community building for bags, vests and gloves.

Members are eager to share the news of their Seventh Annual Giant Plant Sale, Public Gardening Program and Barbecue Luncheon, which will take place from 9 a.m. to 1 p.m. on Saturday, March 25, at the Floral City Community Building on County Road 48/Orange Avenue in Floral City.

Club meetings are open to the public and visitors are welcome. The March 10 meeting will take place at 12296 S. Turner Ave., off County Road 480, or call President Marie Jones at 344-0860.

IF YOU GO

WHAT: Floral City Garden Club's Seventh Annual Giant Plant Sale.

WHEN: 9 a.m. to 1 p.m. on Saturday, March 25.

WHERE: Floral City Community Building on County Road 48/Orange Avenue in Floral City.

Adult World exhibits from

Citrus County Fair awarded ribbons



Here is a list of the winners in the Adult World exhibits from the 2000 Citrus County Fair. Congratulations to all the participants.

KEY: TOD=Top of Division; BOS=Best of Show; B=1st; R=2nd; W=3rd; P=Honorable Mention

NAME	TOWN	RIBBONS WON
Atlee, Ron	Inv	1R
Allen, JoEllen	Inv	1BOS,1B,1R
Alessandra, Debbie	BH	1B
Anderson, Wilma	FC	1B
Atkins, Barbara	Inv	4B
Baker, Ellen	Inv	2B,1W
Balfour, Kay	Inv	2R
Barry, Janet	Lec	2B,1R,1P
Bassett, Lynn	FC	1B
Beckingham, Kathy	Dunn	1TOD,1BOS,1B
Beatty, Marcia	FC	5B
Becker, Paul	CR	1R
Becker, John	Inv	1B,1R,1W
Becker, T	Inv	1B
Berlin, Pam	Inv	2R
Bigelow, Barbara	Inv	1B
Bolton, Julie	CS	1R
Bradley, Curtis	Inv	1B,5R,1W
Breese, Virginia	FC	5R
Brittner, Jan	Lec	1B
Brown, Ella	Inv	1B
Brown, Glynn	FC	1B,1R
Bruno, James	CR	1BOS,11B
Bruno, Marcie	CR	1TOD,1BOS,4B
Bryant, Fred	Lec	1B
Calahan, Shirley	Inv	1R
Calders, Dante	Inv	1R,1W
Canterbury, Diane	Inv	1TOD,1BOS,1B,2R
Camaher, Evelyn	Inv	3B,3W
Cason, Betty	Lec	2B,1R
Casutt von Saterberg, Ursula	FC	1W
Caswell, Gordon & Lorna	Homo	1B
Chappelaine, Roxanne	FC	2B
Childs, Lisa	Inv	1R,2W
Clepy, Joan	BH	1R
Clegg, Louise	Inv	2B
Clements, Rose	Inv	1B,3R
Cordell, Sylvia	Inv	2B
Cronk, Beverly	Inv	2B,2R,2W
Cuny, Paul	Inv	1R
Dallara, Diane	Inv	1B
Dallner, Marian	Her	1R
D'Amico, Chris	Her	1P
Dehnel, Carolyn	Inv	1R
Delacruz, Barb	Her	2W
Dennis, Margie	Homo	1B,2R
DePina, Elizabeth	FC	1TOD,1BOS,4B
Dilger, Barbara	FC	1B
DiLorenzo, Henry	BH	1BOS,1B,1W
DiMock, Nancy	Inv	1B
DiMona, Nicholas	Homo	1BOS,1B
DiRaffaele, Roy, Jr.	Inv	1B
Dirks, Bonnie	FC	1R,2W
Ditchfield, Kathy	Inv	1B,1W
Ditchfield, Michael	Inv	1R,1W
Dobbs, Annabele	Dunn	1OB,5R
Dobbs, Janet	Inv	1B
Dodd, Doug	Inv	1B
Dodd, Stephanie	Inv	1B
Dougherty, Patrick	Dunn	1R,1W
Downs, George	BH	1P
Dudlos, Margie	CR	1TOD,1BOS,1B,1R
Dus, Terry	Her	1B
Durr, Agnes	BH	2BOS,2B
Edmondsten, Thelma	Her	1B
Ellis, Michelle	Inv	1B
Enriquez, Ben	Inv	2R,1W
Farr, Ellen	Her	1B,1R
Feld, Carol	Her	1B,1P
Feldman, Lily	BH	1P
Fierke, Randy	Inv	1W
Fisher, Betty	CR	1R,1W
Foley, Steve	Inv	1B,2R,1W
Folly, Farmer	FC	2B,3R
Fox, Dorothy	Inv	1B,1R
Fredrick, James & Debra	Inv	1BOS,1B
Freeman, Katie	Lec	2B
Gabus, Jessie	BH	1R
Garcia, Nancy	Dunn	3B
Gardner, Barbara	CR	1R,1P
Gates, Barbara	Homo	1R
George, Joyce	Her	1P
Gillespie, Debbie	Her	1BOS,1B
Gompers, Kevin	Inv	1R
Gorsucit, Shirley	Inv	1R
Grau, Teresa	Her	1B
Grudowski, Sandy	BH	8B
Gullo, Jeanne	Homo	1B,2R
Gutman, Jerry	Her	1TOD,1BOS,4B
Hamber, Harold	Inv	1B
Hamilton, Mildred	Her	
Haney, Dwight	Inv	
Haney, Edith	Inv	
Harper, Clarice	Inv	
Harris, Sharon	BH	
Harrison, Carol	Homo	
Harrison, Ginger	Her	
Hendrix, Louise	Inv	
Heys, John	Lec	
Hoyt, Johanna	Inv	
Irvin, Jeannine	Inv	
James, Ernest	Inv	
Jarosik, Susan	Inv	
Jarvis, Doris	Inv	
Johnson, Cathy	Dunn	
Johnson, Donna	Inv	
Jory, Laura	Inv	
Kauffman, Lisa	Homo	
Kehoe, Catherine	BH	
Kelly, Bill	Inv	
Kelly, Lori	FC	
Kendrick, Sarah	Inv	
Kerr, Barbara	Inv	
King, Helen	CR	
King, Mary	Her	
Klug, Dawn	FC	
Krull, Irene	Inv	
Krull, Jerry	Inv	
Kurt, Carol	Inv	
Kushner, Barbara	Inv	
Lamont, Nancy	Inv	
Landers, Bill	CR	
Lane, Nancy	Inv	
Lang, Delois	Lec	
Lawrence, Shirley	Lec	
Lee, Tina	Her	
Lento, Peggy	Inv	
Logan, Shirley	Inv	
Long, Josephine	Inv	
Long, May	Inv	
Luster, Joyce	Inv	
Lynch, Mary	Homo	
Maltman, Peggy	BH	
Marsh, Darlene	Homo	
Martin, Cal	BH	
Masi, Romano	Her	
McDavid, J D	Inv	
McGrath, Terry	FC	
McIntosh, FC		
McIntosh, Jeanne	Lec	

SUNDAY
MARCH 12, 2000

Floral City Garden Club hosts sale

Floral City Garden Club announces its 7th Annual Giant Plant Sale from 9 a.m. to 1 p.m. on Saturday, March 25, at the Floral City Community Building on County Road 48/Orange Avenue next to the fire station.

In addition to the wide selection of nursery-grown and home-grown landscape, patio and bedding plants, the garden club will offer two gardening programs without charge to the public.

Jim Smith of Old South Nursery in Weirsdale will present a program on the Camellia plants for which his nursery is well known.

Chet Oleshewsky of the Citrus County Extension Office, University of Florida, will present a slide program on Helpful Hints for New Florida Gardeners including pitfalls of Florida landscaping.

A continental breakfast and barbecue luncheon will be available. Also, the Floral City Beautification Committee will host a yard sale, with revenue going to enhance downtown Floral City.

For additional information, please call Lynn at 341-0064.

Citrus County (FL) Chronicle Friday, March 24, 2000

Floral City Garden Club hosts plant sale

By Marie Jones

Special to the Chronicle

Ten or more trucks and trailers are all loaded and ready to deliver the quality landscape and patio plants for the 7th Annual Floral City Garden Club Plant Sale from 9 a.m. to 1 p.m. on Saturday, March 25, at the Floral City community building.

Trucks and trailers will arrive Saturday morning for off-loading and setup. Sales will begin promptly at 9 a.m. Home-grown plants by members will be accepted for inspection between 3 and 4 p.m. on Friday, March 24, and the inspection will be accomplished at 4 p.m. by Robert Dudley, plant inspector for the Plant Industry Division of Florida Department of Agriculture and Consumer Services.

Muffins and cakes are baking and barbecue is roasting for the continental breakfast and traditional barbecue luncheon to be served during the plant sale.

Program speakers are sorting their slides and polishing their presentations for the free public programs, also, offered during the plant sale. Chet Oleshewsky of the Citrus County Extension Office, University of Florida will present a lively slide program on helpful hints for new Florida gardeners.

Jim Smith of Old South Nursery was scheduled to talk about Camellias but has had to cancel. In his place, the garden club is pleased to have Evelyn Hallowell discuss the care and propagation of Camellias. Hallowell is a Florida Master Gardener, a member of the Inverness Garden Club and a former member of the Floral City Garden Club. She has an extensive collection of Camellia plants at her property off Old Floral City Road and has shared her knowledge about growing Camellias with numerous groups.

The boxes are loaded and all the previously owned "treasures" are reasonably priced to sell. Members of the Floral City Beautification Committee will be offering "gently used" items at a mini flea market outside the community building and in connection with the Garden Club Plant Sale. All funds are used to "Put the Floral Back into Floral City" as these energetic ladies and their helpers have placed and maintained the planters and benches in the downtown area. A purchase from them puts a bloom in Floral City.

There is something at this annual event for everyone. Don't miss it! Call Lynn for more information, 341-0064.

Floral City club hopes to grow funds

Floral City Garden Club announces its seventh annual Giant Plant Sale from 9 a.m. to 1 p.m. on Saturday, March 25, at the Floral City Community Building on County Road 48/Orange Avenue next to the fire station.

In addition to the wide selection of nursery-grown and home-grown landscape, patio and bedding plants, the garden club will offer two gardening programs without charge to the public. Jim Smith of Old South Nursery in Weirsdale will present a program on the Camellia plants for which his nursery is well known. Chet Oleshewsky of the Citrus County Extension Office, University of Florida, will present a slide program on Helpful Hints for New Florida Gardeners, including pitfalls of Florida landscaping.

A continental breakfast and barbecue luncheon will be available. Also, the Floral City Beautification Committee will be having a yard sale with revenue going to enhance downtown Floral City.

For additional information, call Lynn at 341-0064. **March 23, 2000**

Garden club sprouts interest in camellias

Special to the Chronicle

Large, shiny, dark green, toothed leaves create an interesting contrast to the brown twigs from which they sprout on camellia bushes.

During the winter and spring they make beautiful framing or accent plants in north and central Florida. Camellias thrive in an acid soil and prefer partial shade during part of the day.

If interest has been aroused concerning the cultivation of this plant, then the Floral City Garden Club has a solution.

Jim Smith, owner of Old South Nursery in Weirsdale, will be one of two guest speakers at the club's Annual Giant Plant Sale from 9 a.m. to 1 p.m. on Saturday, March 25, at the Floral City community building.

Smith will return to familiar

territory, since he has deep family roots in the soil of Citrus and Sumter counties. His Old South Nursery is well known for the magnificent camellia bushes grown under the spreading oak trees in Weirsdale.

Visitors to the annual plant sale will be able to learn the how, when and where of growing camellias in this part of Florida.

Some camellias will be available for purchase, although potential buyers are advised that the blooming season is coming to an end and bushes may be without bloom on March 25.

Not only will one learn about camellias, but the club also will offer a program titled "Helpful Hints for New Florida Gardeners." Returning for the third year is Chet Oleshewsky.

A lively and informative speaker, Oleshewsky shares years of experience with the Citrus County Cooperative Extension Office of the University of Florida Extension Service.

This slide show program will include some of the pitfalls of landscaping in this area of Florida. New ideas and safeguards are always picked up from his presentations.

Specific times for each of the programs will be announced closer to the sale date.

These presentations will be inside the community building (next to the fire station) with a continental breakfast and lunch served there, also.

The club's Giant Plant Sale will take place outside the building and it will be joined by a yard sale conducted by

IF YOU GO

WHAT: Floral City Garden Club's Annual Giant Plant Sale.

WHEN: 9 a.m. to 1 p.m. on Saturday, March 25.

WHERE: Floral City community building.

TELEPHONE: 341-0064.

the Beautification Committee, whose revenue is used to enhance Floral City.

The morning programs are provided as a public service at no charge.

Everyone is invited.

For further information, please call Lynn at 341-0064.

Floral City to blossom

SATURDAY
MARCH 18, 2000

with color

Special to the Chronicle

Reds of azaleas, geraniums and bleeding hearts, pinks of begonia and "cracker" roses and the white of the fragrant tea olive shrub will combine with the hundreds of other blooming and non-blooming plants selected for the Floral City Garden Club's 7th Annual Giant Plant Sale, public gardening program and barbecue luncheon.

Invading the Floral City Community Building and grounds on Saturday, March 25, the event will begin at 9 a.m. and run until 1 p.m.

Quality landscape and patio plants have been selected from prime nurseries and a variety of interesting plants have been home-grown by club members. Red and pink Florida landscape roses, pine mountain rose, tea olive shrub, whirling butterfly (gaura) in several colors and buddleia (butterfly bush), loripetalum (Chinese fringe bush), blue daze, azalea, blueberry bushes, yesterday-today-tomorrow, impatience, sago palm, spider plants, a variety of

IF YOU GO

WHAT: Floral City Garden Club's 7th Annual Giant Plant Sale.

WHEN: 9 a.m. until 1 p.m. on Saturday, March 25.

WHERE: Floral City Community Building.

PHONE: Lynn at 341-0064.

ferns and the native-large-blue morning glory are but a few of the plants available for purchase on March 25.

A nice selection of nursery and home grown herbs will be for sale to include borage, lavender (English and French), oregano, pineapple sage, cilantro and basil. Show-stoppers each year have been the baskets

of begonias and geraniums and they will be available again this year at reasonable prices.

All plants will be located outside the community building, while inside a continental breakfast will be served and a traditional barbecue luncheon. The lunch menu will include barbecue, baked beans, cole slaw, cake, muffins and drinks.

Also, inside will be the annual gardening programs that are without charge to the public. Jim Smith of Old South Nursery in Weirsdale will present a program on the Camellia plants for which his nursery is well known. Chet Oleshewsky of the Citrus County Extension Office, University of Florida, will present a slide program on helpful hints for new Florida gardeners, including some pitfalls of Florida landscaping.

Again this year the Floral City beautification committee will host a yard sale at the community building grounds, with revenue going to enhance downtown Floral City.

For additional information, call Lynn at 341-0064.

Gardening club puts spring focus on propagation

Lynn Bassett will host the monthly meeting of the Floral City Garden Club at 12:45 p.m. today at 7188 S. Duval Island Road: Heading east under the oaks on County Road 48, turn left onto Duval Island and drive for about 1½ miles.

Appropriate for spring, propagation will be the theme. Lenry Altavilla, a master gardener with the Citrus County Cooperative Extension Service, University of Florida, will speak. The method of choice for propagating various plants is the topic he will discuss.

Cathi Ayers and Sue Hennessy will be greeters. Pam Bellman and Sue Hennessy will present the monthly fund-raiser, while Lynn Bassett will preside over the "Grow and Share" table.

Members are encouraged to bring cuttings, seeds, bulbs and small plants to share.

Members are reminded to pay dues at this meeting.

Also, members will be paying for their registration to the District V meeting to take place at 9 a.m. on May 5 in the First Presbyterian Church of Inverness. The sponsor will be the Inverness Garden Club.

Be sure to bring a lawn chair for the meeting. Call Lynn at 341-0064 for more information.

April 14, 2000



"A Gathering at the Gazebo"
Especially for the entire
Floral City Community

A night of food, music and sing-along
With an unveiling of the
"Floral City Travelers and Their Trails"
An interpretive history exhibit
At the
Emma Love Jenrette Gazebo Site
Withlacoochee State Trail

Friday, April 28, 2000

Food and music begin at 6:00 p.m.

Dedication at 7:00 p.m.

Presented by the Floral City Heritage Council
Of the Citrus County Historical Society, Inc.

(Bring your own lawn chair ~ Overflow parking
At the Floral City United Methodist Church)



1995
DISTRICT
MEETING





CERTIFICATE OF RECOGNITION



PRESENTED TO

FLORAL CITY GARDEN CLUB

THIS 6th DAY OF December, 1997
IN RECOGNITION OF DEDICATED

VOLUNTEER SERVICE

IN SUPPORT OF FLORIDA'S STATE PARKS

A handwritten signature in cursive script that reads "Robert J. Smith".

Manager, Withlacoochee State Trail

FLORAL CITY GARDEN CLUB

October is busy gardening time

by **Dorothy Clark**

Six new members were introduced at the September meeting by our new president, **Peggy Pattillo**. They are **Pamela Bellman, Audra White, Barbara Monahan, Dora Mitchell**, and **John and Marlene Korycki**.

John and his young son, **Gene**, have been hired to take care of the Memorial Garden and the Community Building Garden, weeding, mowing and mulching as needed.

The ladies of the club used to do this but it got to be too much for them.

We had the pleasure of meeting and hearing our newly elected **State Rep. Nancy Argenziano** tell us about the "Save Our Waters" Week.

She told about the many outings and forums that took place all week from Sept. 20-27. She certainly came across as an asset to our state government. She stressed keeping our waters local.

Marcia Beasley, legislative chairman, told of the plans for highway beautification that come under the 10 programs that comprise the ICED Tea money fund.

Here it is, October. According to Horticulture Chairman **Dottie Sherman**, it's time to set out fall

annuals.

Those that will do well during the winter are petunias, pansies, snapdragons and nasturtiums. The latter will germinate better if they are soaked beforehand. Caladiums may be dug now and stored in peat moss or left in the ground.

Poinsettias should have already been pruned for the last time so that they will bloom for Christmas. They should not be planted where a light hits them at night as they need 14 hours of darkness to bloom.

October is also the time to over-plant your lawn with rye grass seed - if that is what you want to do - to keep your lawn green all winter.

This month is also a good time to divide day lilies and other lilies. If you have more than you need, bring some to share with your fellow gardeners. If larger shrubs are not doing well where they are, this is a good time to move them.

Dottie suggests a teaspoon of ammonia to a quart of water to perk up your geraniums.

Marie Jones used pine-cone ginger as her focal point in her floral design of sanisviera and cedar. **Marcia Beasley** presented the Petal Power Award for the month

to **Jeanne Henson**. This was in recognition of her wonderful work of putting out the yearbook this summer.

There were two plants of the month: a cracker-rose won by **Jeanne Henson**, and a white durante won by **Elaine Reynolds**.

The next meeting will be at the community Building at 1 p.m. Friday, Oct. 10.

Plants of the month will be brought in by **Juanita Cole** and **Denise Gustavson**. Floral design will be by **Marcia Beasley**. **Terry Newberry** will be refreshment chairman with **Marlene Willard** and **Lorraine McManon** assisting. There will again this month be a "Grow and share" table with **Minnie Minnis** in charge.

For those interested, there will be a workshop starting at 10 a.m. learning to make either a wreath or a door swag. You will need to bring your own materials and wire cutters and scissors. To make a 12-inch eucalyptus wreath, you will need two packages of eucalyptus, one package of dried flowers, ribbon, and a spool of 22-gauge wire. You can find these at Wal-Mart.

Bring your glue gun if you have one. Also, bring a bag lunch. Hope to see you all there with a guest.

FLORAL CITY GARDEN CLUB

First club meeting of the season is scheduled Sept. 12

By Dorothy Clark

Floral City Garden Club will open the season with their first meeting on Friday, Sept. 12. The new group of officers installed at the May meeting are: **Peggy Pattillo**, president; **Carol Hart**, first vice president; **Jeanne Henson**, second vice president; **Frances Simpson**, secretary; and **Dorothy Colarusso**, treasurer. The meeting will be at the Floral City Community Building at 1 p.m.

We are pleased to announce that we will have state **Rep. Nancy Argenziano** as our guest speaker. She will tell us about SWFMD's "Save Our Waterworks" program. We hope that everyone will be able to attend this meeting.

Immediate Past President **Marcia Beasley** will tell us about the Florida Scenic Highway.

Floral City Garden Club has as its objective the personal enjoyment and cultural advancement in

floral arrangement, home gardening and protection and conservation of natural resources.

Meetings take place the second Friday of each month except June, July and August. All regular meetings are at the Community Building in Floral City unless otherwise stated in the program.

Several times during the year, we usually go on a field trip or visit a member's garden for a potluck lun-

cheon meeting. Guests interested in gardening are always welcome to attend a meeting.

At four meetings a year, we have a "Grow and Share" table, where members bring cuttings, plants, bulbs and seeds to share with others. Quite a few of the shrubs in my yard were started from cuttings that I got at Garden Club meetings.

There will be no "Grow and Share" table at this meeting but

there will be lots of hollyhock seeds to give out. The hollyhocks that I planted last fall (from deep pink to white) grew 5-6 feet tall, were beautiful for most of spring and summer. Now there are lots and lots of seeds to share with everyone.

Plants of the month will be brought by **Jeanne Henson** and **Peggy Weyl**. Refreshments will be served by **Glenys Phillips** and **Leona Diederick**.

Flowery ceremony

Special to the Chronicle

New officers for the Floral City Garden Club were installed recently by Inverness Mayor Joyce Rogers, left. Officers for the 1997-99 administration period are, from left: **Peggy Pattillo**, president; **Carol Hart**, first vice president; **Jeanne Henson**, second vice president; **Frances Simpson**, recording secretary and **Dorothy Colarusso**, treasurer. Club meetings will resume the first Friday in September at 1 p.m. at the Floral City Community Building.





Garden club hosts plant sale

BULLETIN BOARD

today
March 20

Bring your lawn care and gardening questions to the Citrus County Master Gardener's booth at the Citrus County Fair, from 10 a.m. to 9 p.m.

sat

March 21

Annual Floral City Garden Club plant sale, from 9 a.m. to 2 p.m., Floral City Community Building, County Road 48. Includes presentation on the *Pitfalls of Florida Landscaping* by Tim Johnston, county horticulturist, 9:30 and 11 a.m., noon and 1:30 p.m.

Plants of all shapes, colors and sizes will be for sale at the Annual Floral City Garden Club Plant Sale.

This event will be held at 9 a.m. until 2 p.m. on Saturday, March 21, at the Floral City Community Building on Orange Avenue (County Road 48) within the first block of the traffic light.

Old roses, hanging baskets, potted houseplants, a variety of bromeliads and ferns, pentas, coleus, Indian hawthorn, spirea, liriopse, rosemary, century plant and the list goes on and on of plants for sale.

Samples of bulbs, rain lily seeds and Boston fern will be given away.

While browsing for plants, go into the Community Building for the free presentation to be given that is a "must hear" for those new to the area or those redoing their landscapes.

"Pitfalls of Florida Landscaping" with

slide show will be presented at 9 and 11 a.m. and at noon and 1:30 p.m. by Citrus County Horticulturist Tim Johnston of the University of Florida Cooperative Extension Service.

A light lunch will be offered by the garden club during the hours of the sale for the convenience of those attending this annual event.

The Floral City Garden Club will be joined for the day by their "Friends of the Garden Club."

This group will offer a "Not-so-new-but-good-to-use-sale" to continue their work in obtaining donations for the purchase of benches in Floral City and furthering the beautification of the downtown area of Floral City.

For further information about the annual plant sale, please call 726-7740.





Plan now to buy plants

It's not too early to mark your calendar for Saturday, March 27, when the Floral City Garden Club will host its annual plant sale at 9 a.m. in front of the Floral City Community Building on Orange Avenue (County Road 48).

Plant sale co-chairmen Marcia Beasley and Pam Bellman announced at the monthly meeting that the following members would serve as sub-committee chairmen: Plant purchasing committee — Jo Anne Quackenbush; Home-grown plant committee — Dorothy Sherman; Set-up, take-down committee — Pam Bellman; Plant sales-clerks committee — Pattie Barber; Food-sales committee — Marie Jones; Education committee — Marcia Beasley; Publicity — Dorothy Clark.

Traditionally, the club has purchased quality plants from wholesale nurseries throughout central Florida for resale at its sale. Also offered are a variety of home-grown plants ready for the yard or patio.

For those visiting early and over the noon hour, coffee and muffins and a lunch menu will be available inside the Community Building.

These items can be savored while listening to the educational presentations during the morning hours. Marie

PLANTS

continued from Page 1D

Witt, owner of Crystal River Orchid Supply, will present a program on growing orchids at 9 a.m. County Horticulturist, Tim Johnston, of the University of Florida Extension Service will give a slide presentation on "The

Pitfalls of Florida Landscaping" at 10:30 a.m. and noon.

Also on hand for the day will be the "Friends of the Garden Club," Marty Fish, Merrell Edwards and Barbara Harvey and others, who have provided benches and planters in the downtown area. They will be selling pre-owned items as a fund-raiser to continue Floral City beautification projects.

Monday, March 15, 1999 Citrus County (FL) Chronicle

Floral City Garden Club hosts plant sale March 27

Marie Witt, owner of Crystal River Orchid Supplies, will be featured at 9 a.m. on Saturday, March 27, when Floral City Garden Club opens its annual plant sale in front of the Floral City Community Building.

From 9 to 10 a.m., Witt will present a program on growing orchids. "Most people pamper the plants too much and kill them," she said. The most common problem she sees from her customers is too much water.

Witt will remain from 10 to 11 a.m. for questions and diagnosis of problems. She will be bringing some of her orchids for sale.

Many other plants will be available: blooming camellias, azaleas, flowering hanging baskets, roses, loropetalum, tibouchina, plumbago, yesterday, today and tomorrow, amaryllis, nandina, lantana, butterfly bush, snow bush and many more interesting and unique plants. Come early for a good selection.

Club members purchase

This sale is the one big fund raiser this year. The money will be used for the club's many beautification projects.

quality plants from wholesale nurseries throughout Central Florida for this plant sale. This sale is the one big fund raiser this year. The money will be used for the club's many beautification projects.

There will also be plants grown by members like ferns, tibouchina, kalanchoe, cassia, cracker roses, impatiens, oyster plants and charm hanging baskets.

County horticulturist Tim Johnston of the University of Florida Extension Service will be on hand at 10:30 a.m. and at noon to give a slide presentation on "The pitfalls of Florida landscaping."

SATURDAY
MARCH 20, 1999

Community

Orchid expert to be featured at March 27 plant sale

Marie Witt, owner of Crystal River Orchid Supplies, will be featured at 9 a.m. on Saturday, March 27, when the Floral City Garden Club opens its annual plant sale in front of the Floral City Community Building.

Witt will present a program on growing orchids from 9 to 10 a.m. "Most people pamper the plants too much and kill them," she said. The most common

problem she sees from her customers is too much water.

Witt will remain around from 10 to 11 a.m. for questions and diagnosis of problems. She will be bringing some of her orchids for sale.

Many other plants will be available: blooming camillias, azaleas, flowering hanging baskets, roses, loropetalum, tibouchina, plumbago, yesterday, today

and tomorrow, amaryllis, nandina, lantana, butterfly bush, snow bush, and many more interesting and unique plants. Come early for a good selection.

Club members purchase plants from wholesale nurseries throughout Central Florida for this plant sale. This sale is the one big fund-raiser this year. The money will be used for the club's many beautification projects.

There will also be plants grown by members like ferns, tibouchina, kalenchoe, cassia, cracker roses, impatiens, oyster plants and charm hanging baskets.

County horticulturist Tim Johnston of the University of Florida Extension Service will be on hand at 10:30 a.m. and at noon to give a slide presentation on "The pitfalls of Florida landscaping."

Plan now to buy plants

It's not too early to mark your calendar for Saturday, March 27, when the Floral City Garden Club will host its annual plant sale at 9 a.m. in front of the Floral City Community Building on Orange Avenue (County Road 46).

Plant sale co-chairmen Marcia Beasley and Pam Bellman announced at the monthly meeting that the following members would serve as sub-committee chairmen: Plant purchasing committee — Jo Anne Quackenbush; Home-grown plant committee — Dorothy Sherman; Set-up, take-down committee — Pam Bellman; Plant sales-clerks committee — Pattie Barber; Food-sales committee — Marie Jones; Education committee — Marcia Beasley; Publicity — Dorothy Clark.

Traditionally, the club has purchased quality plants from wholesale nurseries throughout central Florida for resale at its sale. Also offered are a variety of home-grown plants ready for the yard or patio.

For those visiting early and over the noon hour, coffee and muffins and a lunch menu will be available inside the Community Building.

These items can be savored while listening to the educational presentations during the morning hours. Marie

PLANTS, Page 4D



Ned Johnson, of Fort White, demonstrated his chair caning techniques Saturday at Floral City Heritage Days. The annual event features traditional folk crafts like chair caning, soap making and basket weaving.

Jan Witherspoon/Chronicle

Floral City's past in bloom

By Jan Witherspoon
Staff writer

The old oaks on Orange Avenue screened the December noon-day sun, casting shadows on the lawns of historic homes. The avenue of moss-bearded trees is the perfect frame to show off Floral City's Heritage Days.

Crowds wandered the streets and a horse-drawn wagon took people for rides along the historic avenue. The Inverness Squares and Citrus Squares entertained crowds with do-si-does and crinoline flips. "Get rowdy guys," said the caller and singer as he sang "Pink Cadillac," square dance style.

Across the street at The Old Commercial Hotel, Mayor Joyce Roger and Wilma Anderson greeted visitors who wanted to tour the Victorian-style building. The two were dressed in period costume and kept a stream of people moving

through the former hotel.

Historic folklife was demonstrated by basket weavers, soap makers and chair caners. At the Florida Cow Camp, Rod Miner lifted an iron skillet from the outdoor fire to take to his wife, Doris. She shared the cornbread in the skillet with Kelli and Tyler Osheim and Jean Snyder who happened by

Team effort brought success to Floral City Heritage Days

Editor: On behalf of the Floral City Heritage Council, presenters of Floral City Heritage Days 2000, I want to extend my deep appreciation to the many individuals, organizations, churches and businesses that made Floral City Heritage Days on Dec. 1-2 a success.

Foremost, I want to thank the committee members, Herb Keesling, Cathi Ayers, Barry Pendry, Paul Sullivan, Allen Beasley, Sherry Brown, Bill and Janet Weber, Pam Bellman, Marie Jones, Terry Newberry, Larry Hartman, Tom Ellis, Lea Craig, Bob Roberts, Merrell Edwards, Marty Fish, Sandy Mass, Lawana Bain and Kathy Thompson, and all the volunteers who worked with these chairmen to bring about this special event for Citrus County.

To all the owners of historic homes who opened their homes on the tour, to all the hosts and hostesses who welcomed visitors, and to all the other property owners who allowed us to schedule activities on their property, we express our gratitude.

Sincere appreciation is extended to all the individuals and organizations who demonstrated early Florida folk life, daily living skills, trades and activities, and to all those who prepared the village for this special event, to those who prepared and served the folk foods, to the many musicians and entertainers, to the folk dancers, to the Citrus Model "A" Automobile Club, to Nature Coast Carriage Service for the horses and wagons both days, and to all the other exhibitors and participants.

Thanks to the businesses in the downtown area, many special activities were planned and carried out during the Folk Day, which greatly added to the event. A special thank-you to the businesses and organizations that made new Giant Christmas Cards for display along Orange Avenue during December.

The Floral City Heritage Council of the Citrus County Historical Society presents this heritage event to showcase early Florida folk life from the 1860s to the 1920s and to advocate historic preservation of our built environment. Individuals and organizations that have a like interest are

always welcome to join in this annual event on the first Saturday of December and the preceding Friday night.

Again, on behalf of the Heritage Council, I say thank you to all our sponsors, those who provided special assistance, the property owners and all who participated and to all who attended Floral City Heritage Days 2000.

Marcia L. Beasley
Council and Event Chairman

Nearby, Ned Johnson of Fort White made a chair seat out of cane. The 25th Alabama Regiment Company D, made up of Civil War re-enactors, camped near the Florida Traders Camp as the men and women went about their daily routines.

Barbecue ribs and traditional southern fare was ready for

the hungry while nearby folk music filled the air. Clyde Walker and Pete Hennings performed for a crowd gathered around the small stage.

The Historic Home Tour was a success according to Pam Bellman, owner of the Historic Jonathan Knight House.

"We had about 400-500 people touring the house; all five

tour guides were going at all times," she said.

"People seemed to love the home tour. Some of the people have come over and over again and they love to see what's new. We give the history of the house and we've been trying to promote that with the Heritage Council, and that's what people really come to find out."

Community

Citrus County Chronicle

Impromptu events keep club lively

By Marcia L. Beasley
Special to the Chronicle

Scheduled meetings have been over since May, but that has not stopped the Floral City Garden Club from getting together during the summer. Member Cathi Ayers invited members to a luncheon and swim at her historic home, Shadowbright, in Floral City. Members were quick to accept the invitation.

Upon arrival, they gathered around a table laden with photographs from the club's latest project: decorating the Floral City Community Garden for the June wedding of George and Mary Sudheimer. George Sudheimer is the owner and manager of the Floral City Foods, across Orange Avenue from the community garden.

Dorothy Clark shared her photographs of a recent trip to Costa Rica that she and Ed had taken, while the

*This historic home will be the site of the Floral City Garden Club
Standard Home Flower Show on March 31 and April 1, 2001.*

group enjoyed the ample lunch presented by Cathi.

During the afternoon, members agreed they would like to meet for lunch at the Rusty Pontoon in Dunnellon, a restaurant recommended by past president Peggy Pattillo. When Friday, July 21, rolled around, nine members car-pooled to the restaurant for an interesting lunch and to plan their next get-together. There had been much talk about the greenhouse and fish pond at Pamela Bellman's house.

Early Wednesday morning, July 26, a large group from the club drove on to the historic property west of U.S. 41 in downtown Floral City. They picked up

a cup of coffee or tea and a special pastry, then toured the Historic Jont Knight House that Dave and Pamela Bellman have been restoring these past three years.

The highlight of the morning was a visit to Pamela Bellman's yard where a reclaimed brick path led to the greenhouse made of reclaimed windows and filled with an array of propagated plants in various stages of growth.

Outside the greenhouse, a low picket fence surrounded six raised beds of vegetables. Walkways around the garden were covered in the new, permanently colored, cypress mulch that has become popular this year.

Near the garden was the large, irregular-shaped, goldfish pond outlined in recycled slate and plants of many varieties.

Members were interested in learning how plans for the historic cistern were being developed to redirect rain water from the eaves of the house into the cistern for use in watering the garden and other landscape plantings.

Throughout the yard at every turn were more plantings and usually a rustic place to sit and watch the gardens grow.

This historic home will be the site of the Floral City Garden Club-Standard Home Flower Show on March 31 and April 1, 2001. This will be no ordinary flower show, but will include a garden fair, afternoon tea and folk music. In keeping with the historic theme of the house the show title is "Presenting Our Past" in Floral City.

Floral City gardeners plan busy Friday

The Floral City Garden Club has a full schedule planned for Friday.

The day starts with a board meeting at 9 a.m. in the Floral City Community Building.

A workshop follows at 10 a.m. to discuss plans for the March

Flower Show. Bring a bag lunch (or plan to eat out) for the break at 11:30 a.m.

At 12:30 p.m., the regular monthly meeting will take place, with refreshments and Grow and Share at 2 p.m. This month, the program, which will start at 2:30 p.m., will be a field trip to Pam Bellman's Victorian home to survey the area for the flower show.

For more information, call Marie Jones at 344-0860.

FRIDAY
NOVEMBER 10, 2000

Floral City Garden Club to host cultivating events

The monthly board meeting of the Floral City Garden Club will start at 9 a.m. today in the Community Building. A workshop for the upcoming flower show will follow from 10 to 11:30.

Even if you do not plan to have an entry in the show, the workshop will be a great learning experience. Bring a container that you would like to use for an arrangement.

After a break for lunch (bring a bag lunch or go out to eat), the regular monthly meeting will start at 12:30 p.m.

At 2 p.m., Rich Nichol of Aquascape Company will present the program, "Water Gardens." Bring cuttings or bulbs or whatever you have that you would like to share with others for the Grow and Share time after the meeting.

For more information, call Marie Jones at 344-0860.

CRYSTAL RIVER WOMAN'S CLUB
LITERARY GROUP 2000



Club steps back to old Floral City

The Crystal River Woman's Club's Literary Group recently went back in time with a tour of Floral City's fascinating heritage district.

A pair of heritage council volunteers, dressed in period costumes, Marsha Beasley as Ms. James Baker and Tom Ritchie as the Rev. Calvin Claridy, a Methodist circuit riding minister led our group back to earlier days, starting at the Floral City Methodist Church's historic 1880s edifice.

We chatted in the age-old sanctuary. We spoke of many historical facts, pausing to shoo the imaginary chickens from the church. We imagined what it was like, when Floral City was the largest town in the county ... with flourishing farms and sugar caning.

Scottish settlers named the town of nearby Inverness. They spoke of anticipated future horseless carriages. As we sur-

veyed the landscape, exiting the church, we were told there was no need of fertilizer, with all of the cows roaming about.



Ruth Levins
**AROUND THE
COMMUNITY**

The circuit preacher led the service for around 50 people in the congregation, arriving in a two-man carriage drawn by a bay horse that took four hours to travel from Floral City to Homosassa.

We toured the Dave Bellmon home, built in 1900, and made of three sections, with 12 entries, a pyramid roof, part of which was a former turpentine still. The home boasts a small, handpainted bathtub, hand forged nails and original 1800s doors and a star bride kitchen. There is an original cistern that retained rainwater from the expansive grounds.

The Floral City Memorial Gardens, next to the library, was our next stop. Completely developed by volunteers, the 11 layered labyrinth is an exqui-

site work of artistry with six petals depicting mineral, vegetable, animal, man and spirit, a truly spiritual walk ... a perfect spot to pause and meditate.

Along the way, we noted the Community Building, built of limerock in the 1930s, the Old Hotel across the street built in the 1880s, presently owned by Ron Yancey and filled with Victorian antiques.

The nearby Puckett House served as a lunchroom for railroad men and later housed a furniture business.

Of interest is the Floral City Travels and Trails Museum, with drawings and texts by Tom Ritchie, area historian and our tour guide, who told us that the area was once an Indian village. Cow prints were noted in the sidewalk, as evidence that the Fence Law did not take effect until 1950.

Ruth Levins participates in a variety of projects around the community. Let her know about your group's upcoming activities by writing to P.O. Box 803, Crystal River, FL 34423.

June 5, 2001

How an herb can be superb

Local gardeners to present information about herbs, uses

Special to the Chronicle

Parsley, sage, rosemary and ... Time to hear about the cultivation and use of herbs at the monthly program of the Floral City Garden Club at 2 p.m. today in the Floral City Community Building on Orange Avenue (County Road 48).

Ruth Hawn and Betsy Brome, members of the Homosassa River Garden Club, have developed an informative

program on "Herbs and Their Uses." They have presented this program for their own club and will share their knowledge with the Floral City Garden Club today.

The club's board will meet at 9 a.m. in the Floral City Community Building, followed by the monthly workshop at 10. In preparation for the upcoming Standard Home Flower Show, members attending the workshop will bring

a container and fresh and/or dried plant material to construct a floral design. They also are encouraged to bring a container-grown plant to show new members what constitutes a show-worthy specimen. Visitors are invited to the workshop.

Members and visitors attending the workshop may bring a bag lunch and then remain for the business meeting at 12:30 p.m.

Hostesses Cheri Boggs and Cathy Foley will greet members and guests, while Pam Bellman, Jean Knippen and Jeannie Tripp set up the ways and means table. Elaine Reynolds and Pattie Barber will sponsor the drawing

for a plant-gardening item.

At 1:30 p.m., the meeting will break for refreshments and resume again at 2 with the informative "Herbs and Their Uses" pam.

Program of the Floral City Garden Club open to the public without charged new memberships are always welcomed.

For further information concerning the program, call the program chairman, Jan Quackenbush, 344-9146, and for more information concerning membership, call Cathi Ayers, 341-0546. Calls concerning the club may be directed to the president, Marie Jones, at 433-04.

Floral City Garden Club plans a program on herbs today ^{2 p. 00}

Times Staff Writer

FLORAL CITY — Parsley, sage, rosemary and more.

The Floral City Garden Club will present its monthly program on the cultivation and use of herbs. This program will be at 2 p.m. today in the Floral City Community Building on Orange Avenue, County Road 48.

Ruth Hawn and Bettsy Brome, members of the Homosassa River Garden Club, have developed an informative program, "Herbs and Their Uses." They have presented the program at their club and will share their knowledge with the Floral City Garden Club.

A board meeting for the Floral City club will be at 9 a.m., followed by the monthly workshop at 10 a.m. in the Floral City Community Building on Orange Avenue. Visitors are invited to the workshop.

In preparation for the Standard Home Flower Show, members attending the workshop will bring a

container and fresh and/or dried plant material to construct a floral design. They also are encouraged to bring a container-grown plant to help new members learn what constitutes a "show worthy" specimen.

Members and visitors attending the workshop may bring a bag lunch and then remain for the business meeting which will begin at 12:30 p.m. At 1:30 p.m., the meeting will break for refreshments and resume at 2 p.m. with the "Herbs and Their Uses" program.

Programs of the Floral City Garden Club are open to the public without charge and new memberships are always welcome. For information concerning the program, please call the program chairman, Jo Ann Quackenbush, at 344-9146. For information concerning membership, call Cathi Ayers at 341-0546. Calls concerning the club should be directed to president Marie Jones at 433-0860.

Mary Ellen and George



"Intreat me not to leave thee, or to return from following after thee; for whither thou goest, I will go; and where thou lodgest, I will lodge; thy people shall be my people and thy God my God."

- Ruth 1:16 -

Mary Ellen Zavotsky and George H. Sudheimer

will be married on

Friday, June 16, 2000.



Please join us in our celebration.

Floral City Community Building

7:00 pm

Refreshments

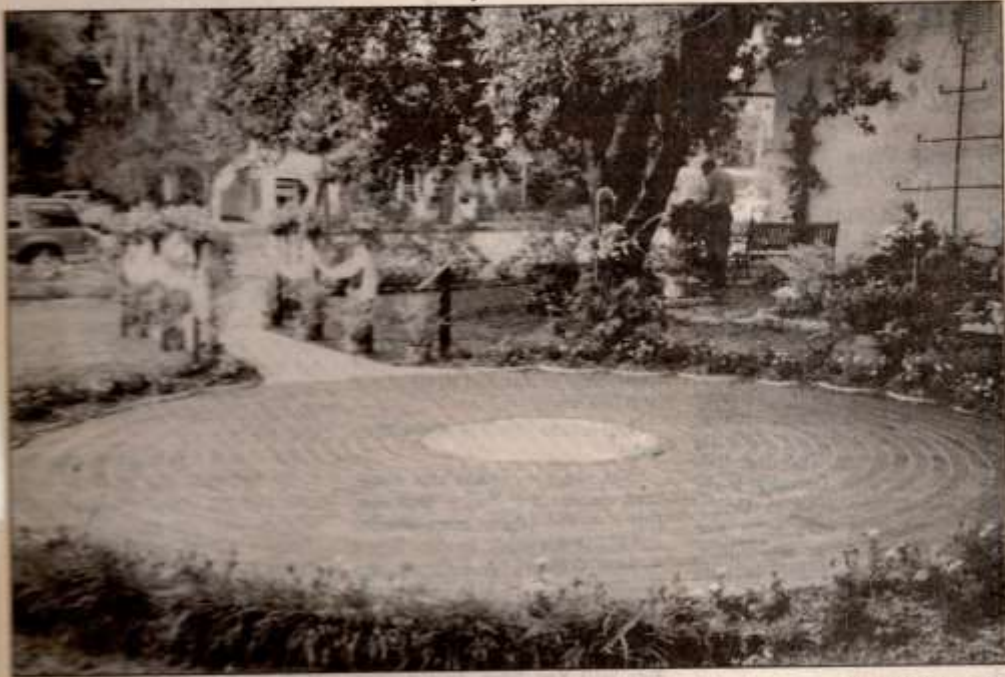
Garden labyrinth

Tuesday, November 14, 1995



CLUBS

Community memorial garden



Special to the Chronicle
Dedicated recently for the recent wedding of George and Mary Sudheimer, the Floral City Community Memorial Garden was established, and is maintained by, the Floral City Garden Club. The brick labyrinth is a feature of the garden, which is between the library and the Masonic lodge on County Road 48 in Floral City.

Floral City Garden Club



Special to the Chronicle
Members of the Floral City Garden Club prepare the walkway to the Floral City Community Memorial Garden for a June wedding. Members, from left, are: Marcia Beasley, Terry Newberry, Pam Bellman and Patsy Neell.

Floral City Garden Club



Special to the Chronicle

Members of the Floral City Garden Club prepare the walkway to the Floral City Community Memorial Garden for a June wedding. Members, from left, are: Marcia Beasley, Terry Newberry, Pam Bellman and Patsy Neell.

Wedding becomes community

Floral City Garden Club makes it one to remember

By Marcia Beasley
Special to the Chronicle

Garden Clubs can find themselves involved in a diverse number of activities and projects, all of which are related to the objectives of the National Council of State Garden Clubs.

Garlands of tulle with yellow and white floral bouquets lined the walkway to the brick labyrinth where the bride joined her groom. The event was the marriage of Mary Zavotsky to George Sudheimer, the location was

the Floral City Community Memorial Garden and the date was Friday evening, June 16.

It was a Floral City community event. The community was invited to the reception next to the garden in the Floral City Community Building. The Floral City Garden Club decorated the Community Garden and businesses, friends and neighbors pitched in to decorate the Community Building, prepare the buffet for the reception, provide the vocal and instrumental music, pass out the labyrinth information

scrolls and the bottles for blowing bubbles and to decorate the auto of the newlyweds in the traditional manner.

Beginning two weeks before the wedding, members of the Floral City Garden Club met to make final plans for the garden. They convinced their "gardening angels" (husbands) to assist them in some aspects of the project. One member shared her ample stand of bamboo, which was cut into four-foot lengths and bound together then tied with raffia. These were installed along the walkway to the labyrinth by the "Gardening Angels." In the top of the bamboo stanchions, the garden club members placed floral bouquets. Green metal cones were filled with oasis, into which was placed yellow mums, white daisies, Ulster merium,

montaseana
Leather leaf fe

Between the white tulle was bouquet atop cascaded down lon size pots of et) were set at stanchion along

Around the labyrinth are 3 cle edgers; in a clubbers plant white periwink bride's colors f

Other plants cially for the large clay pots shepherd's hood flowing baskets



















Zavotsky - Sudheimer

ZAVOTSKY-SUDHEIMER

Mary Ellen Zavotsky and George H. Sudheimer, both of Floral City, were united in marriage at 6:30 p.m. Friday, June 16, 2000. The wedding took place on the brick Labyrinth in the Floral City Community Memorial Garden. The garden was developed and is maintained by the Floral City Garden Club who decorated for the event. Larry Hartman, minister of the Floral City Church of Christ, performed the ceremony.

Maid of honor was Suzanne Frank and best man was Roy Lowdermilk. The bride was given in marriage by her friend and local businessman Jim Donnelly. The vocalist, Jennifer Smythe, was

accompanied on guitar by Joseph Frank. Labyrinth information scrolls were given to guests by Jean Bode, sister of the groom, Pam Bellman and Terry Newberry. Bottles for blowing bubbles as the couple departed the garden were handed out by Barbara Donnelly and one-use cameras were given to guests by Peggy Stalker. Photographs of the ceremony were taken by Phillip Frank.

Following the wedding, a reception was given by the couple for the community in the Floral City Community Building. The reception area had been decorated by Jennifer Smythe, Jean Bode, Peggy

WEDDING

Stalker, Denise Bedford and Johnny, Theresa and Alicia Frank. Guests at the reception enjoyed the lovely buffet prepared by friends Faith McDougald and Lou Staniszewski. Wedding cakes, brought by Tammy Therrien and Peggy Stalker, were decorated in the bride's colors of white and yellow. A dozen red roses adorned the table.

The bride and groom honeymooned at "The Cottage at Shadowbright" in Floral City. The hostess of this special romantic hideaway furnished fresh flowers, champagne, cheese and fruit tray and a keepsake copy of the book,



Zavotsky and Sudheimer

Shadowbright, Poems and Prose.

The bride is employed by the University of Chicago and the groom owns and operates Floral City Foods on Orange Avenue in downtown Floral City. The newlyweds will reside at the groom's home in Floral City.



WEDDING ANNOUNCEMENT

Mary Ellen Zavotsky and George H. Sudheimer, both of Floral City, were united in marriage at 6:30 p.m., Friday, June 16, 2000. The wedding took place on the brick Labyrinth in the Floral City Community Memorial Garden. The Garden was developed and is maintained by the Floral City Garden Club who decorated for the event. Larry Hartman, minister of the Floral City Church of Christ, performed the ceremony.

Maid of honor was Suzanne Frank and best man was Roy Lowdermilk. The bride was given in marriage by her friend and local businessman Jim Donnelly. The vocalist, Jennifer Smythe, was accompanied on guitar by Joseph Frank. Labyrinth information scrolls were given to guests by Jean Bode, sister of the groom, Pam Bellman and Terry Newberry. Bottles for blowing bubbles as the couple departed the Garden were handed out by Barbara Donnelly and one-use cameras were given to guests by Peggy Stalker. Photographs of the ceremony were taken by Phillip Frank.

Following the wedding, a reception was given by the couple for the community in the Floral City Community Building. The reception area had been decorated by Jennifer Smythe, Jean Bode, Peggy Stalker, Denise Bedford and Johnny, Theresa and Alicia Frank. Guests at the reception enjoyed the lovely buffet prepared by friends Faith McDougald and Lou Staniszewski. Wedding cakes brought by Tammy Therrien and Peggy Stalker, were decorated in the bride's colors of white and yellow. A dozen red roses adorned the table.

The bride and groom honeymooned at "The Cottage at Shadowbright" in Floral City. The hostess of this special romantic hide-away, furnished fresh flowers, champagne, cheese and fruit tray and a keepsake copy of the book, *Shadowbright, Poems and Prose*.

The bride is employed by the University of Chicago and the groom owns and operates Floral City Foods on Orange Avenue in downtown Floral City. The newly weds will reside at the groom's home in Floral City.

FLORAL CITY GARDEN CLUB

P. O. BOX 745
FLORAL CITY, FLORIDA 34436

Phone (352) 344-0860

July 02, 2000

PRESS RELEASE

"Floral City Wedding Reveals Special Garden"

Garlands of tulle with yellow and white floral bouquets lined the walkway to the brick Labyrinth where the bride joined her groom. The event was the marriage of Mary Zavotsk to George Sudheimer, the location was the Floral City Community Memorial Garden and the date was Friday evening, June 16, 2000.

It was a Floral City Community event. The community was invited to the reception held next to the Garden in the Floral City Community Building. The Floral City Garden Club decorated the Community Garden and businesses, friends and neighbors pitched in to decorate the Community Building, prepare the buffet for the reception provide the vocal and instrumental music, pass out the Labyrinth information scrolls and the bottles for blowing bubbles and to decorate the auto of the newly weds in the traditional manner.

Beginning two weeks before the wedding, members of the Floral City Garden Club met to make final plans for the Garden. They convinced their "Gardening Angles" (husbands) to assist them in some aspects of the project.

One member shared her amply stand of bamboo which was cut into four-foot lengths and bound together then tied with raffia. These were installed along the walkway to the Labyrinth by the "Gardening Angles". In the top of the bamboo stanchions, the garden club members placed floral bouquets. Fourteen green metal cones were filled with oasis into which were placed yellow mums, white daisies, Ulster merium, montaseana and baby's breath. Leather leaf ferns edged each floral arrangement.

Between the bamboo stanchions, white tulle was draped and from each floral cone atop the bamboo, sprangleri cascaded down onto the tulle. Two-gallon size pots of sensis (variegated privet) were set at the base of each bamboo stanchion along the walkway.

Around the twenty-foot diameter, brick Labyrinth are thirty concrete, quarter-circle edgers; in each of these, the garden clubbers planted yellow marigolds and white periwinkles, compatible with the bride's colors for her wedding.

Other plants were brought in especially for the occasion. Two large clay pots of elks horn ferns with shepherd's hook hangers for the overflowing baskets of white periwinkle, framed the area where the minister stood for the ceremony.

From this vantage point, the bride and groom could view the black metal espalier frame against the white wall of the Floral City Community Library. It was reminiscent of three crosses in one. Trickling water sounded from the fountain in front of the espalier frame and was surrounded by sensis ad dark red Madagascar impatiense. Yellow cultivated lantana and yellow shrimp plants were interspersed with the established azaleas which encircled the seating area where the fountain is located.

Other plants were added to the landscaping at the corner and along the wall of the Masonic Lodge and at the entrance archway to the Garden.

As the garden clubbers worked in the Garden during the week of the wedding, residents would stop by to visit and comment on the progress being made. All agreed that the new plantings improved the already attractive setting.

contintue next page

continue "Floral City Wedding Reveals Special Garden"

After the wedding, the newly weds were heard to say: "It was the most beautiful setting for our wedding that we could have dreamed of. Exchanging our vows amid such spiritual beauty took all of us gathered there to a very special place of the heart."

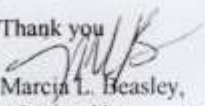
By getting married in the Floral city community Memorial Garden, George and Mary Sudheimer have revealed this little gem of a garden to others in Floral City.

For additional information about the Garden or the Floral City Garden Club, please call President Marie Jones at 344-0860.

Note to the Editor:

We have included two photographs for use with this article. If you can use these and the article we will be especially appreciative since we are planning to apply for a state award for this project in our Garden and this publicity will greatly help that application.

Thank you


Marcia L. Beasley,
submitted by

726-7740

contintue next page

Saturday, June 24, 2000

To the Floral City Garden Club: Marcia Beasley, Pam Bellman, Terri Beck, Terry Newberry, Patsy Neel, Cathi Ayers, Marie Jones and Lynn Bassett and respective husbands, helpers and "Angels":

You made a dream come true and a simple Thank-You note will not suffice! The time you took to plan and the time, effort, and sweat you all put into the project of getting the Memorial Garden ready for our wedding goes beyond any call of duty any Garden Club member ever imagined!

It all started on a day back in early April when Lynn Bassett suggested we take a look at the Garden as a possible site for the ceremony. Soon after that, we had a pizza lunch at the picnic table behind the library (Phyllis Mangler pointed us in that direction). Afterwards, we walked and sat in the garden and knew for sure we wanted to get married there. A short talk with several of you the night of the Gazebo dedication, a short meeting with Marcia Beasley and Marie Jones at Marie's house, a quick visit to Larry Hartman to confirm his availability for the ceremony and you all did the rest to make a fairy-tale wedding!

We saw you digging and planting, hauling and watering, arranging and wrapping and we were in awe. The amount of work you did is appreciated beyond words. The love with which you worked and the joy that radiated in the setting around you gave the finished garden its enchantment. You did not know at the time that we were planning to spend our Wedding Night at Shadowbright, yet Cathi Ayers's hand was already in the creation with her donation of the bamboo for the bouquets!

It was the most beautiful setting for our wedding that we could ever dream of. We will cherish the memory of it forever. We will also forever cherish the friendships we found with each of you as you created such an exclusive place for us. Exchanging our vows amid such spiritual beauty took all of us gathered there to a very special place of the heart.

Thank you all so very much for everything you did!

Mary & George

Mary and George Sadheimer



Club visits 'nowhere' fort today

"Why would they ever build Fort Cooper way out here in the middle of nowhere?" was a question overheard a number of years ago. The fact is that Fort Cooper was built on the only road at the time; the old military road between two other fort locations now known as Tampa and Deala.

Many other questions will be answered as the Floral City Garden Club tours Fort Cooper for its final meeting of the season today.

Members and visitors will meet at the Floral City Community Building parking lot at 10 a.m. to car-pool to the state park. At the park members and visitors will be greeted by Terry Newberry, Frances Simpson and Sue Hennessy.

The business meeting will begin at 11 a.m., followed by lunch. Members are reminded to bring their own lunches and drinks for the day. After lunch, the group will be treated to a historic site tour and nature walk, plus a program on Lyme's Disease.

John and Marlene Korycki and Marcia Beasley will sponsor the monthly fund-raiser.

Members are reminded that on Friday, May 26, the club will have an Adopt-A-Highway roadside cleanup. The club is now in its 11th year with the county Adopt-A-Highway program. Call Pam at 860-2953 for roadside assignments.

A yearbook planning party will take place at Marie Jones' house at 1 p.m. Friday, May 19. All officers and committee chairmen are encouraged to attend.

Dues for the 2000-2001 year must be paid by the May 12 meeting in order for membership to be included in the yearbook.

For additional information, call President Marie Jones at 344-0860.

Club to meet in 'Best Creative Yard'

By Marie Jones
Special to the Chronicle

Down a country roadway and up a wooded lane sits a Swiss chalet with a goldfish pond nearby.

This is the residence of Floral City Garden Club member, Cathy Foley.

It will be the setting for the club's meeting at 12:45 p.m. today.

Members and guests will be greeted by Sue Hennessy and Cathi Ayers. Refreshments will be served by Cathy Foley, assisted by Barbara Milliken.

Following the roll call, Larry Alta Villa of the University of Florida Cooperative Extension Service will present a program concerning "Pest Management and Fungus Control."

He will be joined by Thomas Hewlett discussing biological control of nematodes.

A monthly fund-raiser will be conducted by Patsy Neel and Pattie Barber.

Members are encouraged to bring their cuttings, seeds and bulbs for the Grow and Share Table.

After a brief business meeting, members and visitors will be invited to tour Foley's yard. It was named the Best Creative Yard of the Year for 1999.

Weather permitting, the program will be held outdoors, so everyone should bring a lawn chair.

The following week, the quarterly Adopt-A-Highway cleanup will take place. Helpers will meet at 9 a.m. on Friday, March 17, at the community building for bags, vests and gloves.

Members are eager to

share the news of their Seventh Annual Giant Plant Sale, Public Gardening Program and Barbecue Luncheon, which will take place from 9 a.m. to 1 p.m. on Saturday, March 25, at the Floral City Community Building on County Road 48/Orange Avenue in Floral City.

Club meetings are open to the public and visitors are welcome. The March 10 meeting will take place at 12296 S. Turner Ave., off County Road 480, or call President Marie Jones at 344-0860.

IF YOU GO

WHAT: Floral City Garden Club's Seventh Annual Giant Plant Sale.

WHEN: 9 a.m. to 1 p.m. on Saturday, March 25.

WHERE: Floral City Community Building on County Road 48/Orange Avenue in Floral City.

2000

Garden club sprouts interest in camellias

Special to the Chronicle

Large, shiny, dark green, toothed leaves create an interesting contrast to the brown twigs from which they sprout on camellia bushes.

During the winter and spring they make beautiful framing or accent plants in north and central Florida. Camellias thrive in an acid soil and prefer partial shade during part of the day.

If interest has been aroused concerning the cultivation of this plant, then the Floral City Garden Club has a solution.

Jim Smith, owner of Old South Nursery in Weirsdale, will be one of two guest speakers at the club's Annual Giant Plant Sale from 9 a.m. to 1 p.m. on Saturday, March 25, at the Floral City community building.

Smith will return to familiar

territory, since he has deep family roots in the soil of Citrus and Sumter counties. His Old South Nursery is well known for the magnificent camellia bushes grown under the spreading oak trees in Weirsdale.

Visitors to the annual plant sale will be able to learn the how, when and where of growing camellias in this part of Florida.

Some camellias will be available for purchase, although potential buyers are advised that the blooming season is coming to an end and bushes may be without bloom on March 25.

Not only will one learn about camellias, but the club also will offer a program titled "Helpful Hints for New Florida Gardeners." Returning for the third year is Chet Oleshewsky.

A lively and informative speaker, Oleshewsky shares years of experience with the Citrus County Cooperative Extension Office of the University of Florida Extension Service.

This slide show program will include some of the pitfalls of landscaping in this area of Florida. New ideas and safeguards are always picked up from his presentations.

Specific times for each of the programs will be announced closer to the sale date.

These presentations will be inside the community building (next to the fire station) with a continental breakfast and lunch served there, also.

The club's Giant Plant Sale will take place outside the building and it will be joined by a yard sale conducted by

IF YOU GO

WHAT: Floral City Garden Club's Annual Giant Plant Sale.

WHEN: 9 a.m. to 1 p.m. on Saturday, March 25.

WHERE: Floral City community building.

TELEPHONE: 341-0064.

the Beautification Committee, whose revenue is used to enhance Floral City.

The morning programs are provided as a public service at no charge.

Everyone is invited.

For further information, please call Lynn at 341-0064.



SATURDAY
MARCH 18, 2000

Community

Citrus County Chronicle

Floral City to blossom with color

Special to the Chronicle

Reds of azaleas, geraniums and bleeding hearts, pinks of begonia and "cracker" roses and the white of the fragrant tea olive shrub will combine with the hundreds of other blooming and non-blooming plants selected for the Floral City Garden Club's 7th Annual Giant Plant Sale, public gardening program and barbecue luncheon.

Invading the Floral City Community Building and grounds on Saturday, March 25, the event will begin at 9 a.m. and run until 1 p.m.

Quality landscape and patio plants have been selected from prime nurseries and a variety of interesting plants have been home-grown by club members. Red and pink Florida landscape roses, pine mountain rose, tea olive shrub, whirling butterfly (gaura) in several colors and buddleia (butterfly bush), loripetalum (Chinese fringe bush), blue daze, azalea, blueberry bushes, yesterday-today-tomorrow, impatiens, sago palm, spider plants, a variety of

IF YOU GO

WHAT: Floral City Garden Club's 7th Annual Giant Plant Sale.

WHEN: 9 a.m. until 1 p.m. on Saturday, March 25.

WHERE: Floral City Community Building.

PHONE: Lynn at 341-0064.

ferns and the native-large-blue morning glory are but a few of the plants available for purchase on March 25.

A nice selection of nursery and home grown herbs will be for sale to include borage, lavender (English and French), oregano, pineapple sage, cilantro and basil. Show-stoppers each year have been the baskets

of begonias and geraniums and they will be available again this year at reasonable prices.

All plants will be located outside the community building, while inside a continental breakfast will be served and a traditional barbecue luncheon. The lunch menu will include barbecue, baked beans, cole slaw, cake, muffins and drinks.

Also, inside will be the annual gardening programs that are without charge to the public. Jim Smith of Old South Nursery in Weirsdale will present a program on the Camellia plants for which his nursery is well known. Chet Oleshewsky of the Citrus County Extension Office, University of Florida, will present a slide program on helpful hints for new Florida gardeners, including some pitfalls of Florida landscaping.

Again this year the Floral City beautification committee will host a yard sale at the community building grounds, with revenue going to enhance downtown Floral City.

For additional information, call Lynn at 341-0064.

Local & State

Local Girl Scout works for organization's highest award

By **Kathy Ditchfield**
Special to the Chronicle

A local Girl Scout has earned the highest honor bestowed by the organization for helping with a community project.

Andrea Stuart of Citrus Springs saw a need for a clearly marked entrance to the Central Ridge District Park located on County Road 401 near Holder and just northwest of Beverly Hills.

Her Gold Award was given to her by the Girl Scouts of America for her efforts to organize, design, develop and landscape the district park.

The park is a recreational facility that has enjoyed a public/private partnership as a means to develop the park long before the Citrus County Parks and Recreation Division could have afforded to begin construction.

The private agency in the partnership is the Central Citrus Little League.

The Girl Scout's project included working with the Parks and Recreation Division and raising funds to complete the project.



Girl Scout Andrea Stuart filled the need for a sign at the entrance of a local park and earned the highest award of the organization for her efforts. She received the Gold Award for successfully completing the project.

"I found fund-raising to be the most difficult part of the project. I learned valuable business skills like how to

make contacts, write letters and communicate better," Stuart said. The project required her to study and

use leadership skills, examine career opportunities, and log in community service hours.

Only about 6 percent of those who participate in Girl Scouts earn the organization's highest award.

"It was a goal I set for myself and it also opens up other opportunities like scholarships," Stuart said.

Additional skills needed in the project included money management, time management and an understanding of how to achieve goals.

"The most successful aspect of my project was the feeling of completion and success of meeting my goal," the Scout said.

Senior Girl Scout Troop 256, Venture Crew 415, Boy Scout Troop 415, many volunteers and businesses were all instrumental in helping to achieve the completion of the project, she noted.

Stuart has been educated at home and is now attending Central Florida Community College where she plans to receive an associate of arts degree in business, followed by a bachelor's degree from the University of Florida.

DOOR TO HISTORY



Matthew Beck/Chronicle

Pam Bellman and her husband Dave have worked tirelessly to restore the Jonathan Knight House in Floral City. Part of the house dates back to the 1800s. Above, she thumbs through a book on her screened porch that once was the exterior of the home.



Floral City residents to tour a local historical showcase

By Jan Witherspoon
Staff writer

FLORAL CITY'S HISTORIC life will be on display Saturday when the Blue Banner Tour of Historic Homes opens the doors into the past.

Touring the houses will give visitors a glimpse into how people lived in Floral City's early years. The current owners of the homes have the opportunity to showcase the preservation efforts that are taking place in one small Florida town.

Floral City's Heritage Days is an annual celebration in the Historic District with traditional crafts, food, folk dance and music and the tour of homes.

With 14 houses on the tour, the varied history and lifestyle of early Floral City residents dating back to 1879 will expose the architecture and building styles that reflect the typical Florida residence of those early days.

Two of the houses on the tour are on East Orange Avenue. The Jonathan Knight house sits amid a large yard with gardens and a fence. A wide, friendly porch used to wrap completely around the home, but modifications have incorporated portions of the outdoor porch into the interior.

The tin roof and I-style, also known as a dogtrot house, reflects the period when early settlers typically built their homes with two rectangular sections connected by a narrow passage.

The current owners, Pam and Dave Bellman have lived in the house three and a half years and are returning the charming house to its

original condition.

Drywall has been removed to reveal beaded tongue and groove boards. The dining room and living room are still dry-walled, but remodeling those rooms are next on the Bellmans' project list.

Please see **HISTORY**, Page 4A

IF YOU GO

What: Folklife/Living History Day

When: Saturday, 10 a.m. to 4 p.m.

Where: Floral City

Featuring: Blue Banner House Tour is a self-guided tour of historic homes and buildings, available with a \$5 ticket, which provides entry to all private homes. Enter the tour at any site. Tickets can be obtained at any of the tour homes with a blue banner.

Friday
December 1, 2000

HISTORY

continued from Page 1A

Unusual windows in the front of the house reach from floor to ceiling, and when opened, they slide up into the ceiling and the opening then becomes a screen door opening onto the front porch.

The house was built in sections, Pam Bellman said. The second section added was once a shotgun-style building the original owner Jonathan Knight bought from the turpentine still north of Brooksville and had moved to Floral City.

There are 12 exterior doors in the 4,000-square-foot house. When

the Bellmans finish renovating the upstairs, the house will have about 6,000 square feet of living space. The couple plans to open a bed and breakfast inn when the remodeling is completed; they are hoping it will be completed in two years.

The house is built of yellow pine, still has a cistern for water, all porch posts are hand hewn and is known as Folk Victorian style.

A greenhouse in the backyard is the perfect place to over-winter Pam's selection of plants; a water garden in the back yard still has a lily in bloom. The historic home is not far from the Hills of Heaven cemetery where the Knight family is buried.

The Bellmans are owners of Bellman's Painting business in

Port Richey. Mrs. Bellman said they lived five blocks off U.S. 19 and bought a cabin in Citrus County several years ago when they needed a place to escape their hectic lives. The weekends stretched into three days and then four days; the time came when they didn't want to go back at all. They began looking for an old home to fix up and eventually found the Knight House.

The couple is doing the restoration work themselves. Dave Bellman has helped restore the 1912 Historic Courthouse by doing all the painting and staining.

"We fell in love with the area," Mrs. Bellman said. "I feel like we're in the country, but we can walk to town. But in my yard, I'm in the country."

Living in Floral City has enriched her life in several ways, she said. "I'm getting involved in the community where I didn't in Port Richey. I'm in the Garden Club, Heritage Council and the Historical Society."

Across the street from the Bellman's house is the home of artist Polly Bernard. The house is known as The Historic Berry House and was originally on the south side of Orange Avenue west of Baker Street near the old town site. It was moved to its present site in the 1940s.

The building was used as Floral City's first post office in 1884 and shared space with James Fleming's General Store. Fleming was the town's first postmaster. Bernard said the building has also

housed a hat shop. It's believed the house was built in 1883.

Now painted light green, the two-story house still has original woodwork and windows. The porch-over-porch is gone and windows on the side have been removed.

Bernard, who moved to Floral City from Tavares, has lived in the house for nine years and has maintained the interior close to its original integrity. Bernard has always been an artist, she said, and her primitive-style paintings are displayed on the walls.

"Having an old house is endless work," Bernard said. "I did have to have new wiring, new plumbing, have the outside painted and replaced the divider in the living room."

Bernard is a self-professed collector and her house is home to 150 dolls, a collection of old hats and antique toys as well as her paintings. The narrow, winding steps take you upstairs to Bernard's bedroom where the walls are tongue-and-groove bead board; her gracefully curved iron bed is more than 100 years old.

Other homes open to tour during Floral City Heritage Days are the Old Floral City Bank Building, The Dunn House, Floral City Community Building, The Commercial Hotel, the Zimmerman House, The Allen House, The Irwin Tooke-Spivey House, The D.A. Tooke House, the J.T. Love House, The Church of Christ, the 1884 United Methodist Church and The Puckett House.

Dec 2000
CHRISTMAS





WELCOME TO MY WORLD

A Standard Home Flower Show

Free to the Public

Saturday, December 3
9 am - 5 pm

Sunday, December 4
1 pm - 4 pm

at

Catalina Villa Model Home

The Landings
at Inverness
(E. Gospel Island
Rd. 470)

Presented by

FLORAL GARDEN CLUB

*an affiliate of the Florida State
Federation & the National
Council of State Garden Clubs*

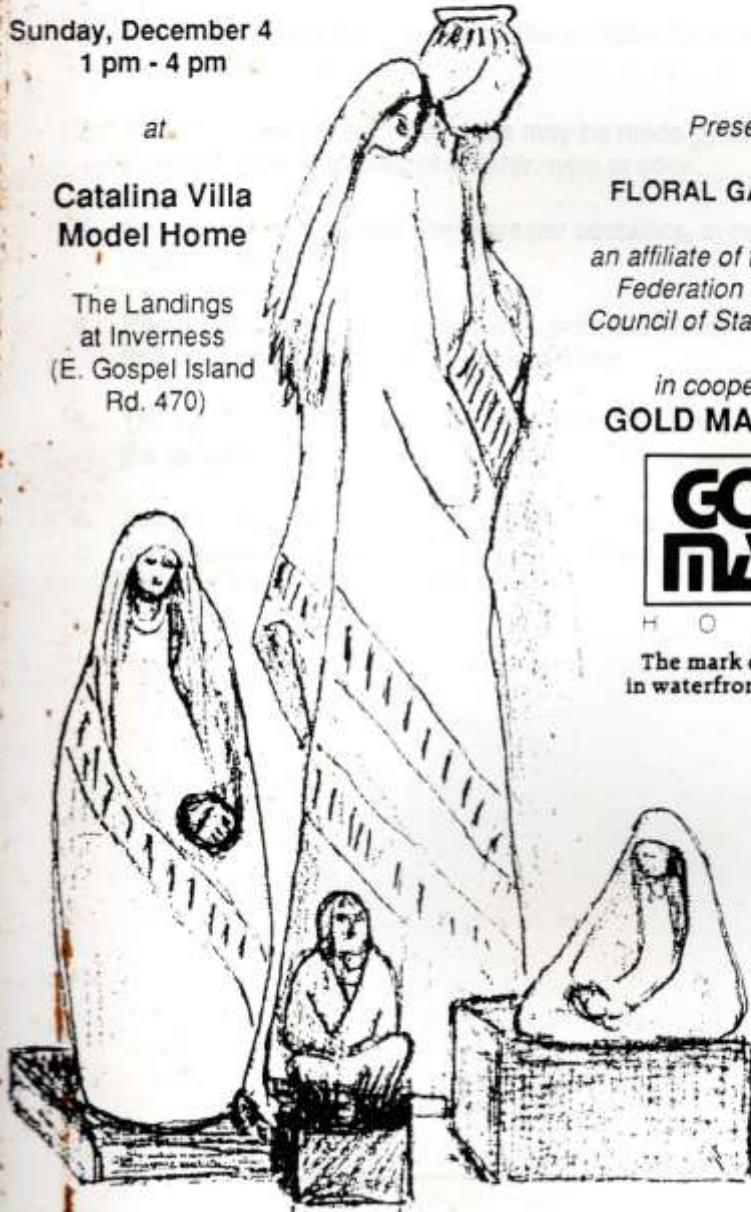
in cooperation with

GOLD MARK HOMES

**GOLD
MARK**

H O M E S

The mark of excellence
in waterfront communities.





AWARDS

1. If merited, two BEST-IN-SHOW (rosette of three blue ribbons) may be awarded; one each in Horticulture Division and one in Design Division. All Classes in each division are eligible.
2. Two SWEEPSTAKES AWARDS (rosette of green and white ribbons) will be awarded; one each in Horticulture Division and one in Design Division to the Exhibitors winning the largest number of awards (Most blue ribbons). In case of tie, red ribbons will be counted.
3. A Floral Garden Club AWARD OF APPRECIATION will be presented to the Gold Mark Homes Corporation.

STANDARD SYSTEM OF JUDGING AND AWARDING will be used for this Standard Home Flower Show. The Standard System allows only one (1) first (blue), one (1) Second (red), and one (1) third (yellow) ribbon to be awarded in each class or each subclass, if merited. One (1) or more honorable mention (white) ribbon may be given in a class or subclass, when merited.

The SCALE OF POINTS in the HANDBOOK FOR FLOWER SHOWS 1987 will be used for Division I Horticulture.

The following SCALE OF POINTS will be used for Division II, Designs:

Conformance	15 points
Design	35
Distinction	15
Suitability of material for type, placement or occasion.....	20
Creativity and expression	15
	<u>100 Points</u>



DIVISION I - Horticulture

Additional Rules:

1. Plants must have been grown by the exhibitor for at least three months prior to the Show.
2. More than one (1) entry per class may be made by an exhibitor, provided each is a different cultivar, type or color.
3. One variety of plant and one plant per container, except in multiple growth plants.
4. Plants should be show-worthy, well-groomed (clean with water only), free from disease and insect imperfections.
5. The exhibitor will furnish clean containers which are appropriate for the location in which the plant is staged. Double potting is permitted.
6. All horticulture specimens must be labeled with the correct botanical name (genus and species), variety or cultivar, when possible. (The common name will be added).



**Division I
HORTICULTURE CLASSES**

- Class 1. Container plants grown for their bloom**
Limited to appropriate containers not more than 8 inches in diameter. Plants will be exhibited on the window sill of the Dinette, Kitchen Area.
- 2. Succulents and/or other foliage plants**
Limited to appropriate containers not more than 8 inches in diameter. Plants will be exhibited on the window sill of the Master Bedroom.
- 3. Foliage Plants grown for their decorative foliage**
Limited to the appropriate containers not more than 12 inches in diameter and over all height of 18 inches. Type of plant and size will be appropriate for the location individually specified within this class.
- a. Exhibited on end of Kitchen Counter.
 - b. Exhibited on end of desk, Living Room.
 - c. Exhibited on left side, dresser in Master Bedroom.
 - d. Exhibited on end table in Den.
 - e. Exhibited on floor right corner Master Bedroom.
 - f. Exhibited on floor right corner Master Bedroom.
- 4. Foliage Plants grown for their decorative foliage**
Limited to appropriate containers not more than 10 inches in diameter nor 4 feet in height. Type of plant and size will be appropriate for the location individually specified within this class.
- a. Exhibited on floor in entry corner of Dining room.
 - b. Exhibited on floor in right corner of Dinette, Kitchen area.
 - c. Exhibited on floor in left corner of Dinette, Kitchen area.
 - d. Exhibited on floor by chair in Master Bedroom.
 - e. Exhibited on floor under window in Master Bedroom.
 - f. Exhibited on floor in corner by round bedside table, Master Bedroom.
-



- g. Exhibited on floor by chair in Den.
5. **Foliage plants grown for their decorative foliage**
Limited to appropriate containers in excess of 10 inches in diameter and more than 4 feet overall height. Type of plant and size will be appropriate for the location individually specified within this class.
- a. Exhibited on floor, right wall - corner of Living Room.
 - b. Exhibited on floor, right corner in Master Bedroom.
 - c. Exhibited on floor in Hallway of Guest Wing.
 - d. Exhibited on floor, left corner next to couch in Den.

Class 6. **Horticulture specimens which cascade or are grown in appropriate hanging containers**
Type of plant and size will be appropriate for the location individually specified within this class. (All these specimens will be staged in laundry room for judging.)

- a. Exhibited in the Laundry Room.
- b. Exhibited in the Laundry Room.
- c. Exhibited on the Corner of dresser in Guest Bedroom.
- d. Exhibited on left corner of closet wall in Master Bedroom.
- e. Exhibited on right corner of closet wall Master Bedroom.
- f. Exhibited on armoire in Master Bedroom.

DIVISION II Design Classes

Additional Rules:

1. Wherever possible Fresh Plant Material will be used.
2. Each design must be created and placed by one (1) exhibitor. Only one (1) exhibit is permitted by an exhibitor in each class.



Division II-Design Classes, Cont. from page 6

3. The type of floral design, choice of plant material and size of arrangement are at the discretion of the individual designer. The exhibit will be appropriate for the location specified within the class entered.
4. The designer must personally view the individual location at the model site. See chairman for photo reference.
5. Plant material/s used in designs will be listed on the entry card.
6. The exhibitor must keep their exhibits in good condition for the duration of the show.
7. The following ARE permitted in all classes of THIS show:
 - a. Dried and/or treated plant material.
 - b. Contrived flowers and/or plant forms constructed of recognizable plant material.
 - c. Accessories in classes 7, 8, 9 and 10.
 - d. Embellishments on dried and/or treated plant materials.
 - e. Seafans and coral.
8. The following ARE NOT permitted in ANY Standard Flower Show.
 - a. Artificial flowers, fruit or foliage.
 - b. Natural bird's nests, "stuffed birds", butterflies or other insects; fish, birds or animals.
 - c. The use of flatware on table sections.
 - d. Landscapes and/or scenes.
 - e. The flag of the United States in a design.
 - f. Living plants (growing plants with roots).
9. The following ARE NOT permitted in THIS Standard Home Flower Show:
 - a. Cut fresh fruit or prepared food/s.
 - b. Sponges, bones, antlers, etc.
 - c. Plastic holiday accessories.
 - d. The use of the color RED.
 - e. Embellishment of fresh plant material.
 - f. Accessories in Class II.



DIVISION II - DESIGN
Design Classes
(All decorative classes)

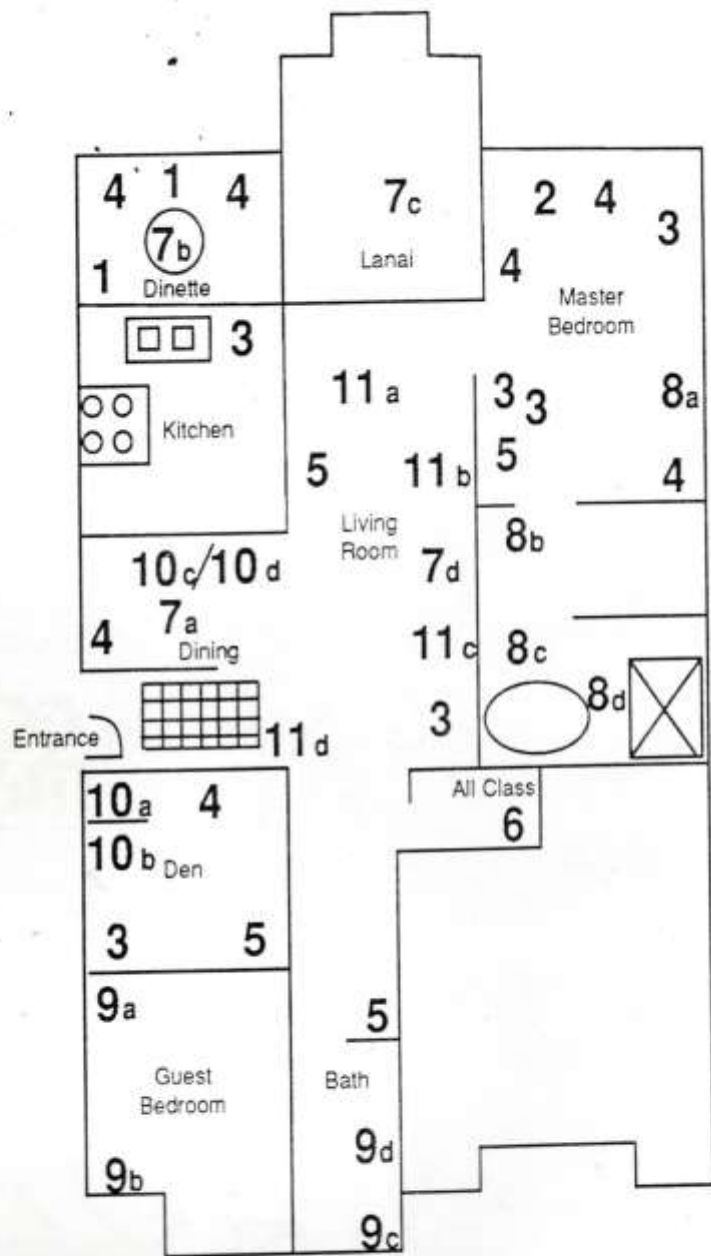
- Class 7. Design suitable for an unset table. Design will be appropriate for the location individually specified within this class. Walls are white, furniture is taupe, salmon and grey. Rug is beige.
- a. Exhibited on a 70" x 40" wide glass top table, Dining Room.
 - b. Exhibited on a round pine wooden table 41" in diameter, Dinette.
 - c. Exhibited on a cream and peach patio round table 41" in diameter, on the lanai.
 - d. Exhibited on a round Salmon-colored coffee table 41" in diameter, Living Room.
8. Design suitable for the Master Bedroom Suite. Each design will be appropriate for the individually specified location within this class. Walls are white, furnishings are taupe, salmon and grey. Rug is beige.
- a. Exhibited on a patterned cloth-covered round bedside table 30" diameter, and under lamp. Lower edge of shade is 19" from table top.
 - b. Exhibited at the right end of the lavatory counter. Design will be reflected in mirror, counter is cream, lavatory is 10" from wall. A wicker basket of towels is between lavatories.
 - c. Exhibited at the left end of the lavatory counter. Design will be reflected in mirror, counter is cream, from end of counter to lavatory is 11". A wicker basket of towels is between the two lavatories.



- d. Exhibited on back of water closet in Shower Room. Underlay is white ceramic 7" wide, 18 1/2" deep. Design will be against a white wall with a towel rack above. Towel may be used at designer's choice.
9. Designs suitable for the Guest Bedroom and Bath. Each design will be appropriate for the individually specified location within this class. Walls of rooms are white, bath fixtures are white, bedspread and table covers are salmon. Rattan and wooden accessories are used. Taupe for furniture-beige rug.
 - a. Exhibited on the round bedside table draped in salmon, 24" diameter. Lamp on table. Lower edge of shade is 16" from table top.
 - b. Exhibited on the round table 24" in diameter, draped in salmon located in window corner of room. Design may be seen from outside windows at entryway. Windows are without drapes or blinds.
 - c. Exhibited on fan-shaped window ledge in guest bathroom and above bath tub. Ledge is 5" deep and 46" wide, 24" at center height.
 - d. Exhibited on back of water closet. Underlay is white ceramic 18 1/2" wide and 8" deep. All white area. No towel rack above.
- Class 10. Design suitable for the Den or Dining Area. Each design will be appropriate for the individually specified location within this class. Walls are white, furniture is taupe, salmon and grey. Rug is beige.
 - a. Exhibited on the top shelf of the bookcase in the Den. Background is taupe. Bookcase top of shelf is scalloped. Shelf is 4 1/2" deep and 36" long and 10" high.



- b. Exhibited on the 2nd from top shelf of the bookcase in the Den. Background is taupe. Bookcase is taupe. Bookcase shelf is 6" deep, 36" long and 13 1/4" high.
 - c. Exhibited on the top shelf of the China cabinet in the Dining Room. Background is salmon. Cabinet is beige. Top shelf is scalloped, and 4 1/2" deep, 36" long and 10" high.
 - d. Exhibited on the 2nd from top shelf of china cabinet in the Dining Room. Background is salmon, cabinet is beige. Shelf is 6" deep, 36" long and 13" high.
11. The sculptures of this modern villa become the featured object in the designs for the Living Room area. Walls are white and furniture is in taupe, peach and grey. Rug is beige. Designs will be appropriate for the individually specified location within this class.
- a. Exhibited on floor in front of protruding left wall of living room. Featured object is a 46" sculpture in taupe of a stylized female on black base.
 - b. Exhibited on floor to right of doorway into Master Bedroom. Featured object is a 27" high, 14" wide, taupe sculpture of a female figure on black base. Area between doorway and end table is 36".
 - c. Exhibited on floor between couch and desk area. Featured object is a 24" high taupe vase topped by a small seated taupe statue on black base. Statuary is 13 1/2" high. Total height is 31 1/4", width at widest area is 13". Area between couch and desk is 49".
 - d. Exhibited on floor between Den and hallway at entry. Featured object is a taupe female sculpture on a 12" high, 12" deep and 18" wide black base. Sculpture height is 17", width is 16" and depth is 10". Total overall height is 29" and wall area is 51" wide.



Catalina Villa