



"The Floral  
Garden  
Club"

Organized in 1956

Federated in 1958

Club Flower--Hibiscus

The garden club story  
by Ruth Kenny

The Hibiscus is related to the hardy rose of Sharon.  
The tropical hibiscus is generally more showy.  
The American Hibiscus Society was incorporated  
in 1950.

"More grows in the garden than the gardener sows"



The fountain used in the past years by Eleanor B. at County Fair Show was given to Marie Merri, a member of Floral City garden club and life time director of the County Fair Ass. The fountain has continued to be used each year at the County Fair Flower Show.



Plans for the 1984 C.F.F show were found among Eleanor's possessions. They called for a gazebo and the use of lattice work. Those ideas were incorporated into props for the Annual Flower Show.



our picnic at  
Floral City park





Friday, April 13

### Floral Garden Club hears wildflower talk

**FLORAL CITY** — The Floral Garden Club will meet in the Community Building in Floral City Friday, April 13. Members are asked to come to a workshop beginning at 9:30 a.m. to finish making programs and name-tags for the District 5 meeting being hosted by the Club May 8.

Board meeting starts at 12:30 p.m. with the social hour at 1 p.m. and the business meeting following at 1:30 p.m. Roy Mays, Chronicle associate editor who writes the Roadside series for the weekend Time Out Magazine, will be the guest speaker on "Wild Flowers." Anyone interested in joining the Garden Club is invited to attend the meeting. Chairman for the meeting is Frances Moore with Juanita Cole and Jennie Moore assisting.

## Valentine sale

FLORAL CITY — The Floral Garden Club will have its next meeting on Friday, Feb. 10, at the Community Building in Floral City at 1:30 p.m. preceded by the annual Valentine sale which will begin at 12:30 p.m.

The sale will include white elephant items, baked goods, arts and crafts, and plants.

This sale is sponsored by the ways and means committee. They request that members bringing sale items bring them at 10:30 a.m. The board meeting will also begin at 10:30 a.m.

The program for the meeting will be "Bonsai," conducted by the Buttonwood Bonsai Club of Homosassa. Chairman will be Evelyn Shroat with Evelyn Schnell, Elsie Hoy and Mabel Hobbs assisting.



## Garden Club meeting features Valentine sale

The Floral Garden Club will have its next meeting on Friday at the Floral City Community Building. The meeting will be at 1:30 p.m. preceded by the annual Valentine sale which will begin at 12:30.

The sale will include white elephant items, baked goods, arts and crafts and plants. This sale is sponsored by the Ways and Means Committee, Margaret Danielson and Doris Sawyer. They request that members bringing sale items bring them at 10:30 a.m. The board meeting also will begin at 10:30.

The program for the meeting will be "Bonsai," conducted by the Buttonwood Bonsai Club of Homosassa. Chairman will be Evelyn Shroat with Evelyn Schnell, Elsie Hoy and Mabel Hobbs assisting.

Anyone wishing to become a member of the Garden Club is invited to attend the meeting.

## Garden Club plans workshop, birthday social

The Floral Garden Club will have their meeting Friday at the Floral City Community Building. There will be a workshop beginning at 9:30 making name tags and program covers for the District 5 meeting, which the club is hosting on May 8. All members are urged to come to the workshop.

The board meeting will begin at 12:30 followed by the social at 1 p.m. featuring a birthday cake. Connie Henning is the chairman with Ruth Griffin and Vera Miller assisting her.

The business meeting will begin at 1:30 during which Frances Simpson will speak on roses.

Jan. 21 is Arbor Day. The Floral City Club will be planting a tree at Floral Park to commemorate the day.

Flower arrangement class  
Instructor Helen Haskins →



Instructor Helen Haskins Floral Arrangement Class 11/12/1984







*Those all the students work.*





FLORIDA FEDERATION OF GARDEN CLUBS, INC.

DISTRICT V SPRING MEETING

MAY 8, 1984

THE FLORAL GARDEN CLUB

FLORAL CITY, FLORIDA

9:00 Registration & Hospitality

9:30 Call to Order: Mrs. A. L. Horning,  
District Director  
Honorable, O. J. Humphries, Mayor  
Inverness, Florida  
Invocation: Mrs. Edward Bailey, Pres.  
Rainbow Lakes Garden Club  
Pledge to Flag: Mrs. Gustave Harrer,  
President, Gainesville Garden Club  
Welcome: Mrs. J. D. Crockett, Pres.  
Floral Garden Club  
Response: Mrs. A. W. Gude, President,  
Dunnellon Garden Club

9:45 PROGRAM: JANUS, TAKE A PEEK  
Mrs. Hugh C. Simmons, President, FFGC  
Mrs. Augustus F. Williams, 1st Vice  
President, FFGC  
Mrs. Dursie Ekman, 2nd Vice President,  
FFGC  
Mrs. Kenton H. Haymans, 3rd Vice  
President, FFGC

10:45 State Chairmen Reports  
District Chairmen Reports  
Club Presidents Reports and  
Recognition of Clubs

Short recess before lunch

12:00 Lunch Blessing: Mrs. John C. Bledsoe,  
Assistant District Director and  
President, Pioneer Garden Club

1:15 Business

Election of Nominating Committee  
for District V

Presentation of Awards & Certificates

Invitations to host District V Meetings

Announcements

Table and Door Prizes

Courtesy Resolution:

Mrs. Charles Haven, President,  
Cedar Key Garden Club

2:00 Adjourn and Benediction

" I Too May Be More"

Butterflies bear witness  
to the power of fragile things;  
on wings like morning-glory petals  
they flutter over oceans  
and mountain ranges.

Butterflies are flowers  
that dared to fly.

Like rainbows, they say God to me;  
what made them must be something that makes  
things just to make them beautiful.

Would you even believe in them  
if all you knew was caterpillars?  
When I see butterflies they lift me  
on their tissue-paper wings!

I too may be more  
than my crawl discloses.

By James Dillet Freeman

Over please ...

SPECIAL THANKS TO

Mrs. Ross E. Ankrom, (Virginia)	Program-Name Tags
Mrs. Frances Burrows	Pre-Registration
Mrs. James D. Jones (Marie)	Registration
Mrs. Edward L. Clark (Dorothy)	Publicity
Mrs. Kenneth R. Henning (Constance)	Decorations
Mrs. Harry Johansen (Bernice)	Coffee Hour
Mrs. Allen O. Beasley (Marcia)	Dinner for FFGC Officers
Mrs. Joseph Falcone (Barbara)	Luncheon
Mrs. Olin L. Simpson (Francis)	Photographer
Mrs. Ivan Morris (Marie)	Hostess
Mrs. Wendell Danielson (Margaret)	Ways & Means
Mrs. Maxwell A. Sickau (Mildred)	Pages

May 3, 84

## Garden Club to host May meeting

The Floral Garden Club of Floral City will host the District 5 meeting of the Florida Federation of Garden Clubs May 8 at Fort Cooper Station Restaurant on U.S. 41, south of Inverness.

Registration and social hour will begin at 9 a.m., followed by a business meeting from 9:30 a.m. to 2 p.m. Luncheon will be served at noon.

Mayor O.J. Humphries will open the meeting with a song. District Director Gloria Horning of Homosassa will preside.

Special guests will include Hazel Simmonds, president from Gainesville; Betty Williams, first vice president from Indian Harbor Beach; Winnie Eckman, second vice president from Brandon; and Elise Haymans, third vice presi-

Charlotte Sustek

## Floral City



dent of Punta Gorda.







Lunch at Marcia  
Beasley home, before  
District V meeting of  
the Florida Federation  
of garden clubs on  
May 8th



L to R  
Helen Lockrow  
Dorothy Colarusso  
Hazel Simmons  
Ruth Kenny  
Marcie Morris



## Garden Club to host May meeting



**FLORAL CITY** — The Floral City Garden Club will host the District Five meeting of the Florida Federation of Garden Clubs on Tuesday, May 8, at Ft. Cooper Station Restaurant.

District Director Gloria Horning of Homosassa will preside at the meeting.

State officers, Hazel Simmonds, president of Gainesville, Betty Williams, first vice president of Indian Harbor Beach, Winnie Eckman, second vice president of Brandon and Elise Haymans, third vice president of Punta Gorda, will also be in attendance.

Mayor O.J. Humphries of Inverness will open the meeting with a song.

Registration and social hour will begin at 9 a.m. The business meeting will be from 9:30 a.m. until 2 p.m. with luncheon being served at noon.























# Rose growers honored

Area winners bloom at second annual



The "Seashell" won an award in the Novice Category last Saturday for Marcia Beasley of Floral City. (Photo by Julie Stetzel)



## Crystal River Rose Show



Frances Simpson of Floral City captured the Third Best of Show Award at the Rose Show last Saturday, for her "Confidence" bloom in the King of Miniatures Category. (Photo by Julie Stetzel)

## Floral City gardeners meet Friday

The Floral City Garden Club will have their next meeting on Friday, Nov. 11 at the Community Building. Marie Morris will conduct a workshop at 9:30 on the basics of flower arranging. She asks that members bring a flat dish or container with either styrofoam or needle-point holder, picks of different lengths, wire, wire cutter, scissors, long-nosed pliers and floral tape if they have it. Also plant material, preferably dry, remem-

bering to include something round for the focal point.

Board meeting will be at 12:30 p.m. The Social hour will begin at 1 p.m. and the business meeting at 1:30. Dessert and coffee will be served by the Committee. Chairman is Marian Fletcher with Margaret MacLeod and Dorothy Sherman assisting.

Frances Simpson will give a dry arrangement demonstration during the meeting.

### Let's have a party

The Floral Garden Club will have its Christmas party Friday at noon at the Floral City Community Building. A salad luncheon will be served.

Members are asked to take their own table service.

The regular business meeting will follow with Marie Jones speaking on holly, and Marie Morris answering questions on horticulture.



Christmas Cactus

## Garden club planning Christmas gathering at Floral City Center

The Floral Garden Club will have their Christmas party on Friday, Dec. 16, at noon at the Community Building in Floral City.

There will be a salad luncheon with members Ankrom through Kenny bringing the food. Members are asked to bring their own table

service.

The regular business meeting will follow with Marie Jones speaking on "Holly" and Marie Morris answering questions on horticulture. Chairman is Bernice Johansen with Leila Martin, Virginia Lefler and Earline Laird assisting.



Poinsettia



Holly



### Plant prize

Marcia Beasler, horticulture director for the Citrus County Fair Standard Flower Show, held in Inverness, displays the prize-winning flowers of Dorothy Clark





### Floral Garden Club

FLORAL CITY-The Floral Garden Club will have their Membership Tea and annual Birthday Party when they meet on Friday, Jan. 11 at the Community Bldg. in Floral City.

The Board meeting will begin at 12:30 and the Social at 1 p.m. with the business meeting following at 1:30. Marcia Beasley will speak on "Prop and Staging for a Flower Show." There will also be a critique of three arrangements.

The committee will be the Executive Officers. All prospective members are invited to attend.



*Our beautiful birthday cake was made by Constance Henning.*



October 9, 1985

#### Garden club

The monthly meeting of the Floral City Garden Club will be on Friday at the Community Building in Floral City.

The board meeting begins at noon, and the social hour at 1 p.m. The regular meeting begins at 1:30 p.m.

The program will be a workshop on holiday door swags presented by Mrs. Marilyn Mathews of Ocala. Members are reminded to bring wire cutters, wire, knife

and magnolia leaves.

Hostesses will be Mate Jones, Virginia Ankrom and Marion Fletcher. Guests are welcome.

#### Garden Club Feb. 6, 85

The Floral City Garden Club will hold its annual Valentine sale at Friday's meeting in the Community Building, at 12:30 p.m.

Doris Sawyer and Sallie Peters are chairwomen of the sale, which will include white-elephant items, baked goods, arts, crafts and plants. They request that items for sale be brought in at 10 a.m. Friday.

The business meeting will begin at 1:30 p.m. with a program on geraniums by Marion Fletcher. There will also be a critique of three arrangements. Prospective members are invited to attend.

#### Garden Club March 15, 85

The Floral City Garden Club will hold its monthly meeting at the Community Building Friday, beginning with a social hour at 1 p.m.

An election of new officers will also take place at the meeting, followed by a film shown by Ruth Haynes of the Audubon Society.

Anyone wishing to join the club is invited to attend the meeting.

The executive board of the club will meet at the Community Building at 12:30 p.m.

#### FRI. SEPT. 13<sup>85</sup>

#### Floral Garden Club meets

The Floral Garden Club of Floral City will meet on Friday, Sept. 13, at the Floral City Community Building on C.R. 48. Social hour begins at 1 p.m. Business meeting starts at 1:30 p.m.

The program will be "Begonias" by Caroline Gazzano. Special guests will be the club sponsored Wekiva Campers, Angie Guy and Christina Bias. Hostesses are chairperson Connie Henning assisted by Ruth Griffith and Mildred Kempen. Guests are welcome.

#### FRIDAY, NOVEMBER 8, 1985

#### Floral Garden Club

FLORAL CITY — The Floral Garden Club will meet today at the Community Building on County Road 48 in Floral City. The board meeting will begin at noon followed by a social at 1 p.m. and the regular meeting at 1:30. The program for the meeting will be "A Demonstration on the Basics of Flower Arranging." Persons interested in flowers or gardening are invited to join. Meetings are the second Friday of each month from September through May.



THURSDAY, FEBRUARY 13, 1986

**clubs**

# Floral Garden Club plans Valentine's Day sale

Citrus Times Staff Writer

FLORAL CITY — The Floral Garden Club will have a Valentine's Day sale of white elephant items, baked goods, plants and craft items from 12:30 to 1:30 p.m. Friday at the community building. The monthly business meeting will follow at which guest speaker Hank Cohen of the Concerned Citizens of Citrus County, Inc. will talk about the quality of life in Citrus County.

Members are requested to have sale items at the community building by 10 a.m. Friday.

APRIL 9, 1986

## Floral City Garden Club

FLORAL CITY — The Floral City Garden Club will meet Friday at the Community Building. The board meeting will be at noon followed by a social hour at 1 p.m. and a business meeting at 1:30. The program will be presented by Marian Fletcher.

## Floral Garden Club hosts salad luncheon

The Floral Garden Club of Floral City will host a salad luncheon on December 12 at 12:30 p.m. at the community building. Members are reminded to bring a dish to pass and your own table service. The program will feature a plant exchange.

Wednesday, May 7, 1986

North.

Floral Garden Club will close the season with a picnic Friday at the home of Dorothy Clark. A car pool will form at 11:30 a.m. at the county building on County Road 48. Participants are asked to bring a table service, covered dish to share and a folding chair. For more information call 344-0860.

Friday, September 13, 1985

The Floral Garden Club of Floral City will meet at 1 p.m. today for a social hour, followed by a meeting at 1:30 p.m. at the Floral City Community Building.

WEDNESDAY, OCTOBER 8, 1986

## Floral City Garden Club

FLORAL CITY — The Floral City Garden Club will meet Friday at the Community Building. The board meeting is at noon and the business meeting at 1:30 p.m.

Margo Crockett will demonstrate the making of flowers from corn husks.

Members are asked to bring scissors and materials. The public is invited.

Nov 14, 86

## Floral City Garden Club to meet

The Floral City Garden Club will hold its regular monthly meeting on Friday, November 14 at the Community Building in Floral City. Social hour at 1 p.m. and business meeting at 1:30 p.m. Frances Simpson will present a program on roses.

1986

## Valentine sale to be held

The Floral Garden Club will be holding a Valentine sale and monthly meeting from 12:30 to 1:30 p.m. Friday, Feb. 14. The business meeting is at 1:30 p.m.

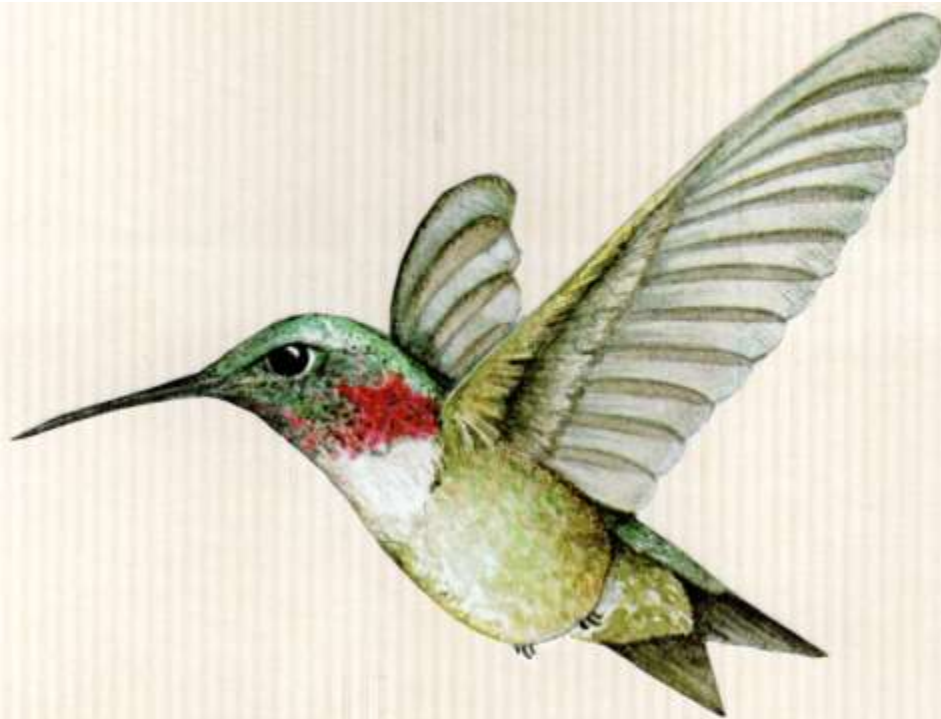
The sale will be at the community building in Floral City. The guest speaker will be Hank Cohen of the Concerned Citizens of Citrus County, Inc. who will speak on "The quality of life in Citrus County."

## Floral Garden club to have design workshop

The Floral Garden Club will meet on Friday, Nov. 8, at the Floral City Community Building with a workshop on Holiday Designs at 9:30 a.m. The Board will meet at noon and the social hour beginning at 1 p.m. followed by the business meeting at 1:30.

The program will be the Origin of Flowers by Doris Sawyer. There will also be a critique of three arrangements made by members.

Chairman for the meeting will be Marion Fletcher with Margaret Macleod and Dorothy Sherman assisting. Anyone wishing to join the Club is invited to attend.



Field Trip to Winter Park, Federation  
of Garden Club Offices on April 19, 1985



April 19, 1985 Field trip to Winter Park, Education of Garden Club office.





Members of our club enjoying lunch on the grounds of the F.O. GC office after our picnic luncheon.



Marye Crockett  
our president







Fragrance  
in the Air

FLORAL GARDEN CLUB  
STANDARD  
FLOWER SHOW

SAT., APRIL 26, 1-8 PM

SUN., APRIL 27, 1-5 PM



ADMISSION FREE

FLOWER SHOW COMMITTEE

Honorary Chairman	Barbara Littlefield
Flower Show Chairman	Marie Morris
Staging Chairman	Marcia Beasley
Schedule Co-Chairman	Morris & Beasley
Judges Chairman	Margo Crockett
Luncheon Chairman	Doris Davis
Assistant	Helen Lockrow
Entries Chairman, Artistic	Barbara Littlefield
Artistic Classif.	Frances Simpson
Entries Chm. Hort.	Virginia Ankrom
Hort. Classification	Margo Crockett
Hort. Placement	Marion Fletcher
Chair. Cut Specimens	Dorothy Nelson
Awards Chairman	Marie Jones
Clerks Chairman	Dorothy Clark
Educational Exhibits	Connie Henning
" "	Maxine Vandevort
" "	Ruth Wetherbee
Publicity Chairman	Marie Jones
Hospitality Chairman	Juanita Cole
Ways & Means	Carolyn Gazzano and Doris Sawyer
Graphics	Dorothy Colarusso
Dismantling	Everyone

THE FLORAL GARDEN CLUB OF FLORAL CITY  
A MEMBER OF NATIONAL COUNCIL OF STATE GARDEN  
CLUBS, INC., FOR TWENTY FIVE YEARS.

PRESENTS

"FRAGRANCE IN THE AIR"

A Standard Flower Show for our own enjoyment as well as the pleasure it will bring to our many Friends and the Community at large.

Our PURPOSE is Three-fold.

First: The Esthetic value of the Entire Show cannot be measured.

" A THING of BEAUTY is a JOY FOREVER"

Second: A learning Experience and acquired Knowledge; Ways to Preserve and increase the Beauty of our Environment; Invaluable for a Happy Contented Life.

Third: The ability to help others to adjust to a NEW WAY OF LIFE.

HOURS OF SHOW

Saturday, April 26, 1:30 to 7:00 P.M.  
Sunday, April 27, 1:00 to 5:00 P.M.

Admission - FREE



"FRAGRANCE IN THE AIR"

A Standard Flower Show  
Spring 1986

GENERAL RULES

1. In every respect this show will comply with the objectives and requirements for a Standard Flower Show, as established by National Council of State Garden Clubs, Incorporated.
2. THE HANDBOOK FOR FLOWER SHOWS, 1977 Edition, plus its SUPPLEMENT 1, shall be used as the authority. The Standard System of Awarding will be used, and Top Awards may be presented if merited. The Judges decisions are final.
3. Plants on the Florida Conservation list which have been legally obtained and are properly named may be used in all Design Classes. If grown by the Exhibitor, they may be entered in the Horticulture Division.
4. Each exhibitor is allowed only one entry in a CLASS or SUBCLASS. One of each variety of a species may be entered.
5. All exhibits must be passed by the Classification Chairman of the Division before being placed.
6. Exhibits must be placed and exhibitors out of the show area by 10:00 A.M., April 26.
7. Judging will be on April 26 between 10:30 A.M. and 1:00 P.M.
8. No exhibits or awards may be removed before 5:00 P.M. Sunday afternoon, April 27.
9. Exhibits must be removed between 5:00 P.M. and 6:00 P.M. on Sunday, April 27.
10. All property must be marked with exhibitors name. The Floral Garden Club will take all precautions to safeguard exhibits, but cannot assume liability for damage, loss, or personal injury.
11. Only authorized personnel allowed on floor during judging.

RULES FOR DIVISION 1 - HORTICULTURE

1. All Horticulture MUST be registered and entered on Friday, April 25 between 6:00 and 8:00 P.M.
2. Cut Flowers, Aboreal and Line Specimens must be checked by Classification Chairman, entered and placed by 10:00 A.M., April 26.
3. Each entry should be labeled with Botanical and Common name (when known).
4. All Horticulture must have been grown by and in the possession of Exhibitor three (3) months prior to the Show.
5. Plants growing naturally with multiple stems will be entered and judged as such.
6. Containers will be provided for cut specimens.
7. Classes may be subdivided by color and variety for judging.
8. Plants should be show-worthy, well-groomed (no oiling), in clean pots or containers.
9. All Horticulture will be removed by 6:00 P.M. on Sunday, April 27.
10. Make advance registration for all potted and hanging plants with Virginia Ankrom at 726-7256

HORTICULTURE DIVISION 1

"CACHET"

"THE LOVELY, BEAUTIFUL FRAGRANCE THAT IS DIFFERENT  
FOR EVERYONE"

SECTION A: Cut Specimen - A Linear Form of Fresh  
Plant Material suitable for the Principal  
Line of a Design. Minimum 18" displayed  
in a "pin-cup", provided.

CLASS 1. Branch

Class 2. Leaf

Class 3. Other meritorious Specimen

SECTION B: Arboreal Cut Landscape Specimen, 18"-30"

Class 4. Fruited, Flowering, Berried.

Class 5. Broadleaf

Class 6. Evergreen

Eligible for Arboreal Award

SECTION C: Cut Specimens - Blooming; Foliage only  
if naturally attached to stem.

Class 7. Bulbs, Tubers, Cormes, Rhizomes  
(Single Stem)

Class 8. Annuals and Biannuals (Three  
Stems)

Class 9. Perennials (Single Stem)

SECTION D: HANGING BASKETS

Class 10, Foliage

Class 11, Flowering

Class 12, Fruited

SECTION E: POTTED - FOLIAGE

Class 13, Dracaena

Class 14, Filices (Ferns)

Class 15, Other Meritorious Specimens

SECTION F: Potted Flowering Plants

Class 16, Begonia

Class 17, Impatiens

Class 18, Other Meritorious Specimens

## EDIBLES

### SECTION G: Class 19, Vegetables

1. Large Variety - 1 Specimen
2. Small Variety - 3 or more, same variety

### Class 20, Herbs

1. Cut Specimen
2. Potted

Note: Edibles must be displayed on white paper plates, furnished by the Club For Green Leaf Vegetables like lettuce, place in a small container with some water to help prevent specimen from wilting.

### SCALE OF POINTS:

Quality	30	Best Eating Stage Developed to proper size.
Condition	25	Free from diseases, spots, insects, discolored.
Size	15	Average or slightly above.
Typical of Variety	15	Ideal for Variety
Uniformity	15	Every Specimen a duplicate of all others.

## RULES FOR DIVISION II - DESIGN

1. Exhibits must be the work of one exhibitor, but may be placed by another. If unable to exhibit on date of show, the exhibitor must provide a substitute.
2. Exhibitor will freshen the design, if needed, on the second day of the show, or make arrangements for the Show Committee to do so.
3. No artificial flowers, fruit or foliage may be used in any class.
4. PLANT MATERIAL IN THE DESIGN WILL BE LISTED ON A 3 x 5 CARD. BOTANICAL AND COMMON NAMES SHOULD BE USED.
5. CLASSES I, III AND IV must use all fresh plant material and are eligible for the Tricolor Award. CLASSES II, V AND VI must include some fresh plant material; other materials, designer's choice plus other components. Painted, dyed, contrived, treated or dried plant material allowed in all three classes; they are eligible for the Award of Creativity.
6. Accessories are permitted in all classes. ACCESSORY, "Anything in an arrangement in addition to plant material, container, base, background or mechanics, subordinate in the design".
7. Exhibitor must check design with the Classification Chairman, before leaving the floor.
8. All judges will vote on the top awards.
9. Designs in CLASSES II, V AND VI may be entered on Friday evening April 25, between 6:00 and 8:00 P.M. All designs must be entered on April 26, between 8:00 A.M. and 10:00 A.M.
10. All designs must be removed by 6:00 P.M. Sunday April 27.
11. Please make advance registration for all design classes with Barbara Littlefield at 344-4574

DESIGN - DIVISION II

"CARDIN"

"GLORIOUS SIGNATURE FRAGRANCE, AN ENCHANTED  
FLORAL BANQUET"

- |      |   |  |
|------|---|--|
| I.   | <p>"ARPEGE" "PROMISE ANYTHING"-<br/>"Give Beautiful Memories Of<br/>The World's Most Treasured<br/>Fragrances"<br/>All fresh plant material,<br/>staged on a counter, 32" Wide<br/>and 24" Deep.</p>  | <p>TRI-COLOR CLASS<br/>Conformance 10<br/>Design 35<br/>Color 20<br/>Distinction 15<br/>Expression 20<br/><hr/>100</p>                 |
| II.  | <p>"OMBRE" "An Aura of Mystery<br/>Captures The Spirit - So<br/>Fashionably Exciting - So<br/>Wildly Extravagant"<br/>A "FREE STANDING DESIGN"<br/>DISPLAYED ON A 12" PLATFORM:<br/>Display area; 30"X30" HEIGHT<br/>UNLIMITED. See Design Rules.<br/>Background to be furnished by exhibitor.</p>  | <p>CREATIVITY<br/>Conformance 10<br/>Design 25<br/>Color 15<br/>Distinction 15<br/>Creativity 20<br/>Expression 15<br/><hr/>100</p>    |
| III. | <p>"AVIANCE" Surround Yourself with<br/>the Warmth of Sunny Days, A<br/>Lyrical Blend of the Garden<br/>Aroma"<br/>A functional Table set for a<br/>Patio Brunch on a CARD TABLE<br/>30" x 30". All fresh Plant<br/>Material; Fruit and or Vege-<br/>tables may be used. One Place<br/>Setting using linen, China or Glassware.<br/>Designer to furnish Table Cover</p> | <p>TABLES<br/>Functionalism 10<br/>Decorative Unit 25<br/>Design 20<br/>Color 15<br/>Expression 15<br/>Distinction 15<br/><hr/>100</p> |
| IV.  | <p>"A TOUCH OF CLASS" Chic and Sophisticated, Yet -<br/>Feminine; It's Timeless Beauty will Capture Your<br/>Heart".<br/>Staged on the Mantel; Space Available 21" Wide<br/>by 11½' Deep; Height Unlimited.<br/>All Fresh Using Roses; Identical Containers Will<br/>Be Furnished.</p>  |  |

- V. "WINDSONG" Magnetic and Radiating - An Irresistible Fragrance that "Stays On Your Mind" Staged on a Black Pedestal - 14" Square Top; Some Fresh Plant Material must be used. See Design Rules. Background color to be furnished by Designer.
- VI. "ENJOLI" "WOODSY AND RICH in FLORALS: A MELANGE Created for Today's Contemporary Life Styles" Staged on a Black Pedestal, 14" Square Top. Some Fresh Plant Material must be used. Decorative wood is permitted; (weathered wood that has been altered by paint, wax, other color or other material, etc.,) (Interpretive Arrangement using Designer's choice of plant material.) (see Design Rules) Background color to be furnished by Designer.

#### AWARDS

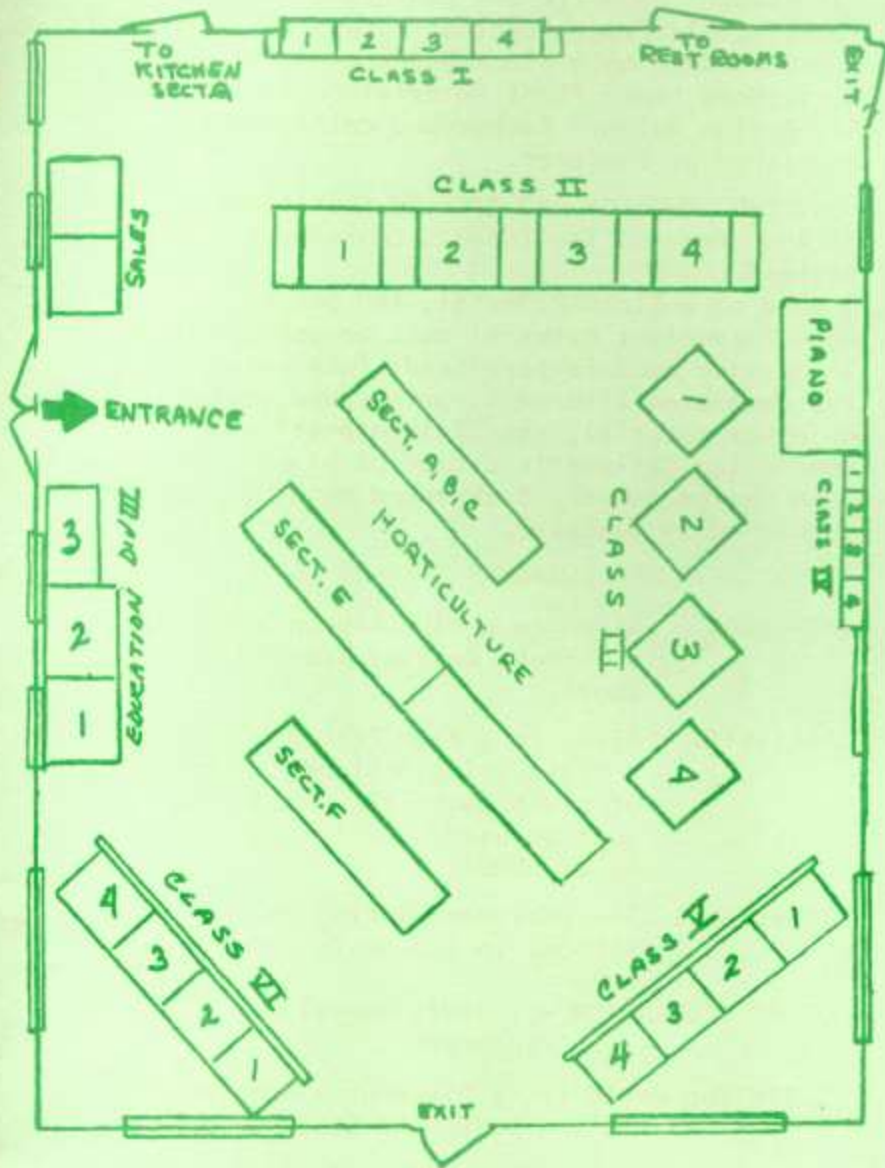
- TRI-COLOR Given to a Blue Ribbon winner in all Fresh Design, scoring 95 or above.
- CREATIVITY Given to a Blue Ribbon Winner in a class using Designer's choice of plant material. Some fresh must be used. Design must score 95 or above.
- SWEEPSTAKES The Designer winning the most Blue Ribbons in the Design Division.

#### EDUCATION - - DIVISION III

##### "CHEMEIRE"

"To The World It is Discreet - But Up Close It's "SOMETHING ELSE"

- Class 1. Printed materials available locally for SELF STUDY.
- Class 2. Propagation Methods of Common Plants, (Landscape and House Plants)
- Class 3. "POTPOURRI IN THE AIR"



SECTION D , HANGING BASKETS ON PORCH  
 SECTION Q , BATALES IN KITCHEN

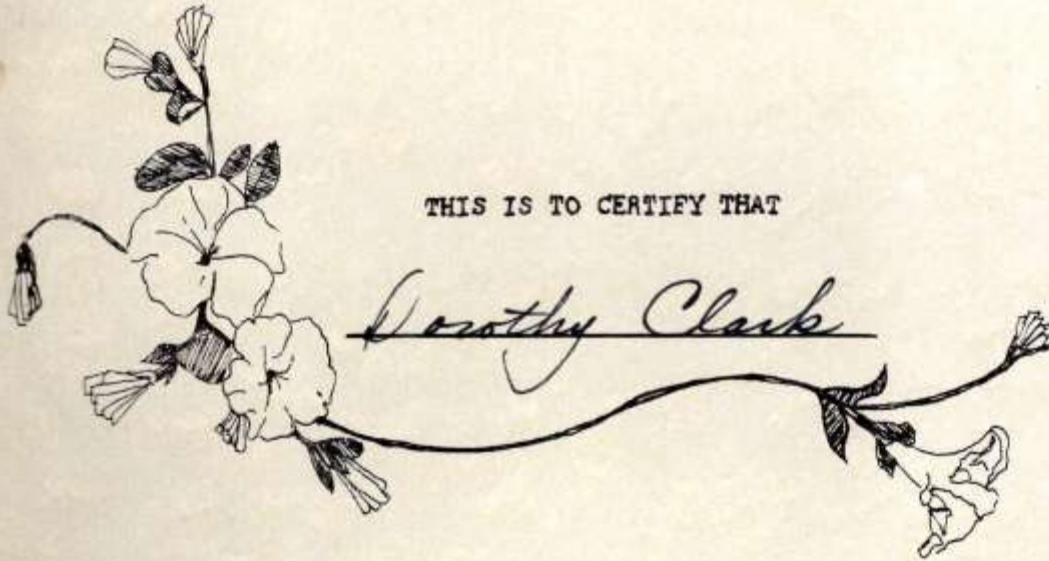




FLORIDA FEDERATION OF GARDEN CLUBS, INC.



# Floral Design Study



THIS IS TO CERTIFY THAT

HAS SUCCESSFULLY COMPLETED SIX UNITS AS PRESCRIBED  
IN THE STUDY PROGRAM.



*Lucy I. Brooker*  
FLORAL DESIGN CHAIRMAN  
1985

FLORIDA FEDERATION OF GARDEN CLUBS, INC.



# Floral Design Study

THIS IS TO CERTIFY THAT

DOROTHY CLARK

HAS SUCCESSFULLY COMPLETED PRESCRIBED UNITS  
7, 8, AND 9



*Doreen L. Brooker*  
FLORAL DESIGN CHAIRMAN

DATE *1986*

Floral Garden Club  
Standard Flower Show

on Saturday  
April 26, from 1 to 8 p.m.  
on Sunday  
from 1 to 5 p.m.  
1986

# FLORAL GARDEN CLUB STANDARD FLOWER SHOW

SAT., APRIL 26, 1-8 PM

SUN., APRIL 27, 1-5 PM



ADMISSION FREE

THE FLORAL GARDEN CLUB OF FLORAL CITY  
A MEMBER OF NATIONAL COUNCIL OF STATE GARDEN  
CLUBS, INC., FOR TWENTY FIVE YEARS.

PRESENTS

"FRAGRANCE IN THE AIR"

A Standard Flower Show for our own enjoyment as well as the pleasure it will bring to our many Friends and the Community at large.

Our PURPOSE is Three-fold.

First: The Esthetic value of the Entire Show cannot be measured.

" A THING of BEAUTY is a JOY FOREVER"

Second: A learning Experience and acquired Knowledge; Ways to Preserve and increase the Beauty of our Environment; Invaluable for a Happy Contented Life.

Third: The ability to help others to adjust to a NEW WAY OF LIFE.

HOURS OF SHOW

Saturday, April 26, 1:30 to 7:00 P.M.

Sunday, April 27, 1:00 to 5:00 P.M.

Admission - FREE

Sunday, April 20, 1986.

## Garden Club sets show dates

The Floral City Garden Club is sponsoring a standard flower show on Saturday, April 26 from 1 to 8 p.m. and on Sunday from 1 to 5 p.m. at the Community Building on S.R. 48 in Floral City. Fragrance in the Air is the theme and the public is invited. Admission is free.



# Gardeners show their true colors

At the recent Floral Garden Club Flower Show at the community building, 114 horticultural specimens and 24 artistic arrangements were entered and judged. It all began at 10 a.m. with the arrival of the judges, who were served a continental breakfast on the community building porch among hanging greenery and rose displays by Keith and Sybil Barea.

Seventy-eight blue ribbons were awarded, with 28 red ribbons, 18 yellow ribbons and 13 white ribbons presented.

Separate balloting by the judges resulted in the following special recognition awards:

Virginia Ankrom, arboreal and merit awards, Dorothy Clark, a sweepstakes in horticulture, Conale Henning, educational and merit, Ruth Kenny, horticultural excellence, Marie Morris, creativity, Evelyn Shroat, merit, and Frances Simpson, the tricolor and sweepstakes in design.

Miniature roses, plants and supplies were sold on the shuffleboard courts outside to cover the cost of producing the show, which was presented free to the public.

If you would like to participate in the next show or wish to learn more about growing plants in Florida, the Garden Club invites you to join them. The club meets at 1 p.m. the second Friday of each month, September through May, in the Community Building. Also for your summer reading, the club has donated a large assortment of books covering all subjects of gardening, horticulture and flower arranging to the Floral City library.

Mark Sept. 12 on your calendar now, and join in to share ideas, learn how to cultivate a beautiful surrounding, and meet new friends.



*The porch of community building where Flower Show was held.*

*Potted Hybrid Tea Roses by Medlin's Nursery*

*Shown L to R,*

*Constance Henning*

*Barbara Littlefield*

*Dorothy Colarusso*





On porch of community building  
 where Floral Garden Club  
 Standard Flower Show was held  
 Horticulture Division I  
 "Cachet" Section D  
 Hanging Baskets

↳ Above picture - Rabbit Foot Fern  
 1st Blue - Sweetpeas  
 Ruth Kenney



SECTION D: HANGING BASKETS  
 Class 10, Foliage  
 Class 11, Flowering  
 Class 12, Fruited





Education Div III  
 Entry #1 Connie Henning  
 #2  
 #3 Marcia Bearley



Education "CHEMIE" Division III  
 "To The World It is Discreet - But Up Close  
 It's "SOMETHING ELSE"  
 Class 1. Printed materials available locally  
 for SELF STUDY.  
 Class 2. Propagation Methods of Common Plants,  
 (Landscape and House Plants)  
 Class 3. "POTPOURRI IN THE AIR"

EDIBLES

SECTION G: Class 19, Vegetables

- 1.. Large Variety - 1 Specimen
2. Small Variety - 3 or more, same variety

Class 20, Herbs

1. Cut Specimen
2. Potted



SCALE OF POINTS:

Quality	30	Best Eating Stage Developed to proper size. Free from diseases, spots, insects, discolored.
Condition	25	Average or slightly above.
Size	15	Ideal for Variety
Typical of Variety	15	Every Specimen a duplicate of all others.
Uniformity	15	



HORTICULTURE DIVISION 1

"CACHET"

"THE LOVELY, BEAUTIFUL FRAGRANCE THAT IS DIFFERENT FOR EVERYONE"

SECTION A: Cut Specimen - A Linear Form of Fresh Plant Material suitable for the Principal Line of a Design. Minimum 18" displayed in a "pin-cup", provided.

CLASS 1. Branch

Class 2. Leaf

Class 3. Other meritorious Specimen



SECTION B: Arboreal Cut Landscape Specimen, 18"-30"

Class 4. Fruited, Flowering, Berried.

Class 5. Broadleaf

Class 6. Evergreen

Eligible for Arboreal Award

SECTION C: Cut Specimens - Blooming; Foliage only if naturally attached to stem.

Class 7. Bulbs, Tubers, Cormes, Rhizomes (Single Stem)

Class 8. Annuals and Biannuals (Three Stems)

Class 9. Perennials (Single Stem)





1st Hort Show  
 See E  
 Nita Cole - Blue  
 Croton Luty  
 Sedum Entry  
 Blue



SECTION E: POTTED - FOLIAGE  
 Class 13, Dracaena  
 Class 14, Filices (Ferns)  
 Class 15, Other Meritorious Specimens



SECTION F:  
Potted Flowering Plants  
Class 16, Begonia  
Class 17, Impatiens  
Class 18, Other Meritorious Specimens



SECTION F:  
Potted Flowering Plants  
Class 16, Begonia  
Class 17, Impatiens  
Class 18, Other Meritorious Specimens



SECTION C: Cut Specimens - Blooming; Foliage only  
if naturally attached to stem.  
Class 7. Bulbs, Tubers, Cormes, Rhizomes  
(Single Stem)  
Class 8. Annuals and Biannuals (Three  
Stems)



Floral City, April 26-27. Flower Show; Community Building. Saturday, 2 to 6 p.m.; Sunday, 1 to 4 p.m. Sponsor; Floral Garden Club. Information; Marie Morris, 6950 South Duval Island Drive, Floral City 32636.

Judges for show: -  
Irene Glenn  
Marion Rattiner  
Liz Shaw



Design Class 1  
Entry #1  
Dorothy Clark  
(2nd) place



Design Class 1  
entry #2  
Marie Morris  
(1st) place

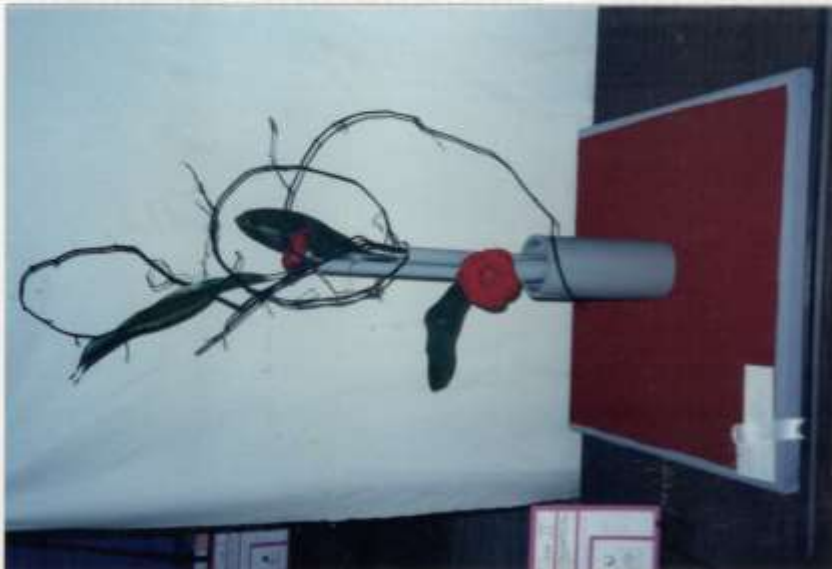




Design Class I  
 Entry #3  
 Dorothy Caloremas  
 Hon Mention (White)



Design Class I  
 Entry #4  
 Maria Jones  
 (3rd) yellow



Design Class II  
 Entry #3  
 Maria Beasley  
 Hon Mention (White)



Design Class II  
Entry #1  
Barbara Littlefield  
(2nd) Red

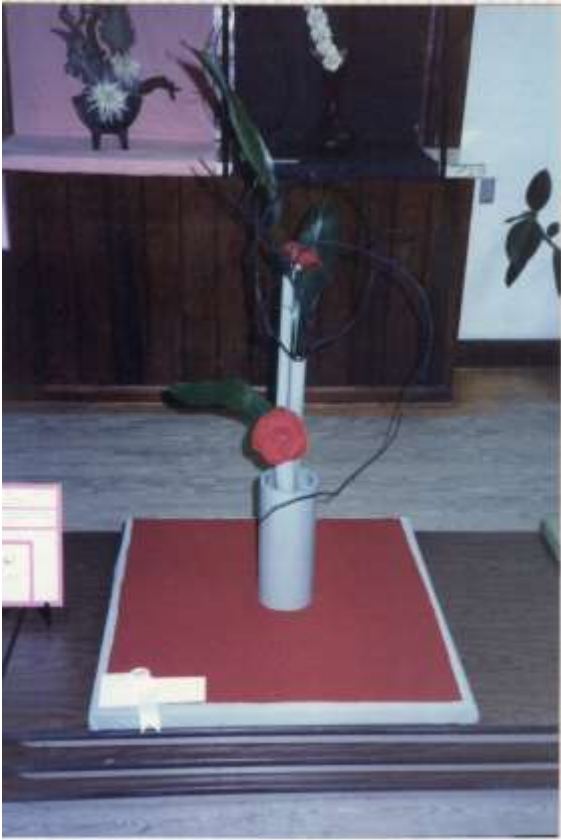


Design Class VI  
Entry #4  
Melia Morris  
creativity Award  
Blue

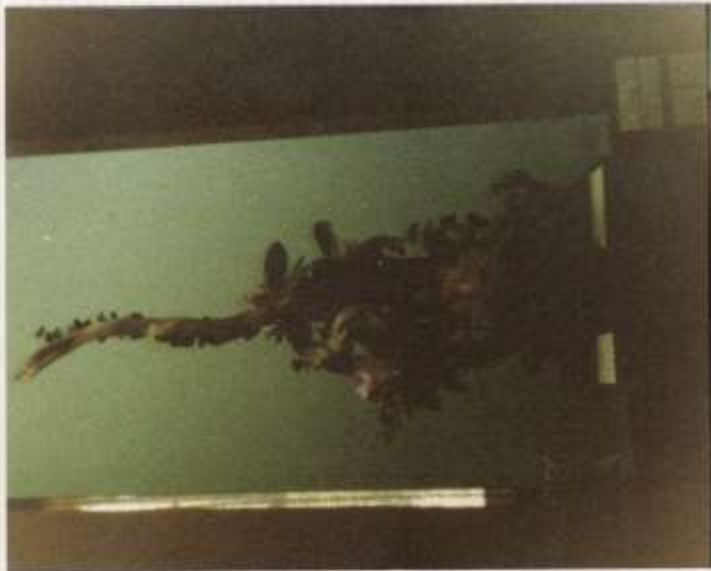
11. "OMBRE" "An Aura of Mystery  
Captures The Spirit - So  
Fashionably Exciting - So  
Wildly Extravagant"  
A "FREE STANDING DESIGN"  
DISPLAYED ON A 12" PLATFORM:  
Display area; 30"X30" HEIGHT



Design Class II  
Entry #2  
Francis Simpson  
(3rd) yellow



Design Class II  
Entry #3  
Marsha Beasley  
Hon. Mention (white)



"AVIANCE" Surround Yourself with TABLES  
 the Warmth of Sunny Days, A  
 Lyrical Blend of the Garden  
 Aroma"

Functionalism	10
Decorative Unit	25
Design	20
Color	15
Expression	15
Distinction	15
	<hr/>
	100

A functional Table set for a  
 Patio Brunch on a CARD TABLE  
 30" x 30". All fresh Plant  
 Material; Fruit and or Vege-  
 tables may be used. One Place  
 Setting using linen, China or Glassware.  
 Designer to furnish Table Cover







Rosie Snodgrass  
3rd

Margo Crockett  
Hon. Mention

Francis Simpson  
1st

Marie Jones  
2nd

IV. "A TOUCH OF CLASS" Chic and Sophisticated, Yet -  
Feminine; It's Timeless Beauty will Capture Your  
Heart".  
Staged on the Mantel; Space Available 21" Wide  
by 11½" Deep; Height Unlimited.  
All Fresh Using Roses; Identical Containers Will  
Be Furnished.





V. "WINDSONG" Magnetic and Radiating - An Irresistible Fragrance that "Stays On Your Mind" Staged on a Black Pedestal - 14" Square Top; Some Fresh Plant Material must be used. See Design Rules. Background color to be furnished by Designer.



VI. "ENJOLI" "WOODSY AND RICH in FLORALS: A MELANGE Created for Today's Contemporary Life Styles" Staged on a Black Pedestal, 14" Square Top. Some Fresh Plant Material must be used. Decorative wood is permitted; (weathered wood that has been altered by paint, wax, other color or other material, etc.) (Interpretive Arrangement using Designer's choice of plant material.) (see Design Rules) Background color to be furnished by Designer.

Class #1 Design  
 Entry #2  
 Francis Simpson  
 Sincere thanks for design

Blue (sat)



Martin  
P. ...



# Gardeners show their true colors

At the recent Floral Garden Club Flower Show at the community building, 114 horticultural specimens and 24 artistic arrangements were entered and judged. It all began at 10 a.m. with the arrival of the judges, who were served a continental breakfast on the community building porch among hanging greenery and rose displays by **Keith and Sybil Barco**.

Seventy-eight blue ribbons were awarded, with 28 red ribbons, 18 yellow ribbons and 13 white ribbons presented.

Separate balloting by the judges resulted in the following special recognition awards:

**Virginia Ankrom**, arboreal and merit awards, **Dorothy Clark**, a sweepstakes in horticulture, **Connie Henning**, educational and merit, **Ruth Kenny**, horticultural excellence, **Marie Morris**, creativity, **Evelyn Shroat**, merit, and **Frances Simpson**, the tricolor and sweepstakes in design.

Miniature roses, plants and supplies were sold on the shuffleboard courts outside to cover the cost of producing the show, which was presented free to the public.

If you would like to participate in the next show or wish to learn more about growing plants in Florida, the Garden Club invites you to join them! The club meets at 1 p.m. the second Friday of each month, September through May, in the Community Building. Also for your summer reading, the club has donated a large assortment of books covering all subjects of gardening, horticulture and flower arranging to the Floral City library.

Mark Sept. 12 on your calendar now, and join in to share ideas, learn how to cultivate a beautiful surrounding, and meet new friends.

## Summer camp opportunity given

This year the Floral City School will be able to sponsor one student — either a boy or a girl — to Camp Wekiva summer camp.

This weeklong program is being sponsored by the Citrus County Garden Club. Camp Wekiva is near Apopka. Students in grades third through sixth grades are eligible for nominations to the camp.

Parents interested in nominating their children to attend the camp can call **Marilyn Key** at 726-1554.

## Floral Garden Club

White Elephant Sale is the featured event of the regular monthly meeting of the Floral Garden Club of Floral City. Members are reminded to bring plants, craft items, baked goods, and miscellaneous items for sale to the community building at 10 a.m. on Friday, February 13. Sale and social hour begins at 12:30 with business meeting at 1:30 p.m.



## Garden Club begins season

The Floral Garden Club will begin the season Friday, September 11, at the Floral City Community Bldg. A social hour at 1:00 p.m. will precede the regular 1:30 p.m. business meeting.

Doris Sawyer will present the program highlighting her trip through the mid-west.

Hostesses: Lillian Boettcher and Caroline Gascano.

Anyone interested in becoming a member of Floral Garden Club is invited to attend the meeting.

There will be a Board meeting September 8, at the home of Doris Sawyer at 9:30 a.m.

1987



County Fair

The Garden Club will meet March 13 at the Community Building to car-pool at 11 a.m. to the Bonsai Gardens in Land O' Lakes. Bring a sack lunch.

## Romance, business blossom

By ARCHIE BLOUNT  
Tribune Staff Writer

LAND O' LAKES — Manson and Eve Johnson have an unusual business story. They have made it big by thinking small.

The husband-and-wife business team own Eve's Garden Inc., a growing wholesale and retail nursery operation that specializes in bonsai, the art of cultivating miniature trees.

The Johnsons' business is in a Japanese pagoda garden that houses a forest of tiny trees on U.S. 41 just south of the intersection of County Road 583 and U.S. 41.

The garden, complete with fire engine-red walkways, Oriental gazebos, bridges and fountains, houses thousands of miniature trees, from Japanese junipers to tiny azaleas with flowers no bigger than a thumbnail.

Some of the trees are 30 or more years old but stand no more than 2 feet tall.

The Johnsons met through a mutual interest in bonsai that both enjoyed as a hobby. As their romance blossomed and so did their desire to start a wholesale bonsai business.

They "had very little capital at all," Manson Johnson said. They began their business operation in the garage in their home in Lake Padgett Estates.

"In 1981, we made \$6,000," he said.

Then came Walt Disney World and the business' first big break.

When Manson Johnson found out that a buyer from Disney World was interested in purchasing wholesale bonsai trees, he called Disney's Orlando office and held the telephone for 45 minutes waiting for a chance to talk to the buyer.

"When he finally came on the line, we made the deal," Manson said.

From there, the Johnsons began heading for the malls during the Christmas shopping season.

"We started out by scraping together every cent we had to rent a space in East Lake Square Mall," Eve Johnson said. "We did extremely well."

From that one mall experience in the early 1980s, the Johnsons began to expand their mall operations to dozens of others across the



Tribune photo by SCOTT KEELER

Eve and Manson Johnson, owners of Eve's Garden in Land O' Lakes, look over an assortment of their bonsai trees.

southeastern United States. In 1985, Manson Johnson said, the business had to hire 188 sales people to handle all the mall business.

"It got too big and too hard to manage, so we had to plan a different approach," he said.

That approach emphasized retail sales, contacting big wholesale outlets by attending trade shows and developing a unique bonsai "starter kit."

All three moves have been successful.

The retail aspect of the business bloomed with the opening last summer of the garden area, and Publix grocery stores became a major wholesale purchaser of the Johnsons' bonsai.

"Publix has 313 stores, and with six trees in each store, that's an order of \$18,000," Manson Johnson said.

The bonsai "starter kit," which

retails for about \$20, contains everything a customer needs to start a bonsai tree: a juniper tree, clippers, soil, rocks, fertilizer, moss, a ceramic container and a book Eve Johnson wrote on the art of bonsai.

The kit comes in a gift box with an Eve's Garden logo.

"This past Christmas season we couldn't make them fast enough," Eve Johnson said.

This year, Manson said he expects Eve's Garden bring in more than a million dollars in sales.

The couple credit their success to each other's business ability and long hours of work.

Eve Johnson credits her husband with having a flair for management and business planning. He says his wife is "a super salesperson."

"We wouldn't be successful without each other," she says.

FLORAL CITY — The Floral Garden Club will hold a picnic Friday at the home of Dorothy Clark. Members are asked to bring a covered dish, their own table service and a folding chair. A car pool will form at the Community Building on County Road 48 at 11:30 a.m. This will be the group's last meeting of the season.





6B—COAST NEWS, Wednesday, April 8, 1987

### Floral City Garden Club

The Floral City Garden Clubs monthly meeting will be held on Friday, April 10. A car pool will form at the Community Building in Floral City at 11:30 a.m. for a picnic luncheon at the home of Dorothy Clark. Members are reminded to bring a covered dish to pass and a folding chair. Jan Hannel of the Citrus Garden Club will be our guest and discuss landscaping plants.



Marie Morris and Kathie Mueller



'This is my first original creation ever'



'Don't drop it; it's not artificial'

### Christmas party set

The Floral City Garden Club will hold its Christmas party at the meeting on Friday. There will be a salad luncheon, with food prepared by club members. There also will be a plant exchange. The committee for this meeting includes Helen Lockrow, chairwoman, and Margaret MacLeod, Dorothy Sherman, Leola Mills and Marie Morris.





1987  
Dorothy Clark  
showing young students  
at Floral City school how  
to plant a garden.



July 8 - 87  
Jolene Weaver and Christina were selected from the troop to attend Camp Wekiva for one week in July. The campers are sponsored by the Floral Garden Club. A member of the Garden Club, Dorothy Clark, has been attending their meetings from time to time and teaching the troop the art of gardening. They even met at Floral Park and weeded out the flower beds and planted new flowers and plants.



Friday, December 18, 1987,



## Planting the Constitution

With a little help from the Floral Garden Club, students at Floral City Elementary School do the groundwork for their "Constitutional Garden" at the school. From left are Dorothy

Clark, president of the Floral Garden Club, Joey Lanier, Chip Denney and Win Jennings, 2nd vice president of the club. (Chronicle Staff Photo)



# Ways to preserve flowers discussed

Marie Jones, secretary of the Floral City Garden Club, displayed her talents and shared her knowledge on the preservation of flowers at the group's last meeting. For examples, she showed agent-dried flowers, some which utilized corn meal and salt and other preservatives. She also showed flowers preserved with silicone and others that were microwaved. She demonstrated how to make gifts out of them.

Mary Zaccardi  
Floral City

At the same meeting the club held its annual birthday party and membership tea. All club members' birthdays are observed at this event. The plant raffle was won by Eleanor Grandon.

Plans were made for next month's meeting, which will be a combination plant, baked goods, and white elephant sale. It will be held from 12:30 to 1:30 p.m., Feb. 12, and the public is invited to attend.

The Floral Garden Club will have their Annual Membership Tea and Birthday Party at 1 p.m. Friday at the Floral City Community Building. Prospective members are invited. Marie Jones will present a demonstration on preserving dried flowers.

1/2/88



Marie Jones

## Floral City *Jan 20*

The Floral Garden Club will have a white elephant, plant, craft and baked goods sale from 12:30 to 1:30 p.m. Friday at the Floral City Community Building. A business meeting and demonstration using dried flowers will follow the sale. All items to be offered for sale should be brought in by 10 a.m.

## Floral City *May 88*

The Floral City Garden Club will have a workshop meeting at 1:30 p.m. Friday at the Floral City Community Building. Members are asked to bring containers, green foliage and flowers. Small tools will be needed.

## Club holds last meeting

The Floral City Garden Club had its last meeting of the season in the form of a workshop where the members spent time on flower design and arranging. The club will re-

sume activities again the second Friday in September.

The members who will serve the club in office for another year include Dorothy Clark, president; Marcia Beasley, first vice president; Barbara Littlefield, second vice president; Marie Jones, recording secretary; Carolyn Gazzano, corresponding secretary; and Dorothy Colarusso, treasurer. The summer will be spent preparing and organizing programs for each meeting next year. Anyone with an interest in gardening and flowers is welcome to join. Call Clark for information at 344-2339. *6-27-88*

## Mighty Floral City

In 1885 Floral City was Citrus County's largest community. Its population of 300 was twice as large as Miami's.

All our beautiful cakes  
are made by: -  
Constance Hearnig



Her secrets to living a long, happy life

# FLOSSIE LOVE BASSETT

By ESTHER DUNCAN  
Chronicle Writer

**W**hy do some women seem to never lose their zest for life — even in their 80's?

Determined to seek the answer to this question, the writer visited Floral City's distinguished grand dame, Flossie Love Bassett, who's noted for her youthful zest.

The former Bessie Love was born in Floral City in 1901.

Mrs. Bassett, who looks at least a decade younger, is a direct descendant of Floral City's founder, John Paul Formy-Duval, who was her grandfather. Duval, at one time, owned all of Floral City.

Fittingly, Mrs. Bassett lives in a charming home on Duval Island, land her grandfather also once owned and which was named after him.

Mrs. Bassett was asked the secret of her longevity and contentment.

"I don't waste time thinking about unpleasant things," she replied. "When I go out to lunch I want to have a pleasant time — not listen to someone's tale of troubles, the details of someone's illness."

She said she was amazed at the many women who don't make any effort to enjoy themselves. Who sit home, following the same routine and spend their time talking about problems. Problems of their own. Problems of their family. Problems of the world.

"If you can't talk about something pleasant," she said, "I think you shouldn't talk at all."

Mrs. Bassett is of the opinion that it's extremely important for a senior to maintain a serene atmosphere.

"You must avoid upsetting conditions as much as possible," she said. "Concentrate on the positive, instead. There's so much that's wonderful in life, waiting to be enjoyed."

### THE LITTLE THINGS

For Mrs. Bassett it's the little things that count. They're important to her.

She pointed to a fisherman in his boat just beyond the edge of the lake viewed from the long

proven and gluten content of yeast breads require the higher protein and gluten content of both white and whole wheat, is made from soft wheat with a lower gluten and protein content.

the view, the day — that was important.

A tall, brown heron stood on one leg, looking over the lake, perhaps waiting for the fisherman to toss him a fish.

Mrs. Bassett smiled indulgently. "A beauty, isn't he? We've lots of birds and animals, including otters."

She spoke of filling her bird bath with bird feed and being surprised to find that the gallinules quickly took over her hand-out.

She laughed. "Animals and birds aren't much different from man. They'll rely on free hand-outs."

She spoke of a pet raccoon. "I've never seen him, but I think the world of him. I put out my garbage every night and every morning every single crumb is gone. It's my perfect garbage pick-up."

"I enjoy my yard," she said. "There's something going on all the time."

She spoke of her attitude toward the news. "I don't fret over bad news as I'm too busy enjoying the beauty of life around me."

What about her eating habits, the writer inquired.

"I eat very lightly — a lot of fruit and nuts. I seldom eat a large dinner or large meals of any kind. We don't need them when we're seniors. In fact, I don't think they're good for us."

Asked what she did for entertainment, she said she loved Bridge.

"Duplicate especially," she said. "It's a game that makes you use your brain. And it gets you out among people. I play a lot of Bridge."

Mrs. Bassett seems to be a super-sharp woman — one wonders if Bridge can be given as much credit as she seemed to want to give this fascinating game of mathematics.

### CHILDHOOD MEMORIES

Perhaps Mrs. Bassett's childhood had a lot to do with the kind of a woman she is today. Her father was Junior Octavius Love of Tennessee who came to Florida and married Duval's

DEAR ANDREA — Pasta flour, wheat flour? — ANDREA pasta flour and regular whole-wheat flour are made from soft wheat with a lower gluten and protein content.



FLOSSIE BASSETT stands proudly behind her 70 year-old fern that has been in her family for a long time. Mrs. Bassett is a direct descendant of the founder of Floral City, John Paul Formy-Duval, who was her grandfather. Duval, at one time, owned all of Floral City. (Photo by Estl Duncan)

taffy pulling."

She said that her mother was a wonderful woman, always so kind to her nine children. "She never spanked a single one of us, yet we always minded her. She had a way with words."

One gathered that Mrs. Bassett's mother had a profound influence on her.

She said of her mother, "She was a very strong woman. I'm very proud of her. I'm proud of many homemade cleaners. I'm proud of her."

Vinegar is a basic ingredient in many homemade cleaners. I'm proud of her. I'm proud of her."

extended family, which — they say — helps to give the child stability.

It may have resulted in this lady's remarkable zest for life.

### DUVAL GENES

Perhaps some credit should be given her Duval genes.

Her great-grandfather was a French medical officer who had to flee from the country.

to Dr. Donohue, No. 15, P.O. Box 19860, Irvine, CA 92713. Close \$1 and a long, stamped self-addressed envelope. FAR DR. DONOHUE: How does Out of summer, he noted.

Story continued →

Jane, was the first white child born in Ocala. Later the family moved to what is now Floral City — owning all of the land in that area and also what became known as Duval Island.

Mary Jane grew up to marry James Hampton, a descendant of a wool merchant from London, England who arrived in Virginia in 1620. The couple lived on considerable land, an area now known as Lake Hampton. They too had large orange groves and hundreds of cattle and swine.

Maybe the hardy pioneer blood running in Mrs. Bassett's veins from all these Florida pioneers has something to do with lady's upbeat outlook on life.

Like others, she has triumphed over tragedy in her life. She married Thomas Earl Zellner in 1920 and they had a son, James.

When their son was only a year old, Tom died from burns received from an explosion while working on an automobile. James is now with the Federal Aviation Agency in Miami as an engineer.

Later, Bessie Love married Henry D. Bassett II. His father was general manager of Florida operations for the American Agricultural Chemical Company and operated the Bradley mine at Floral City. They had a son, H.G. Bassett III, a Pan-Am pilot.

Mrs. Bassett, now a widow again, spoke proudly of her sons. They're an important part of her life.

Her life is also deeply entwined with the history of Floral City. Maybe being so close to the pulse of this quiet, lovely community has given her some of her inner peace.

#### CONCLUSION

Nevertheless, I felt that my visit to Floral City had definitely proven that attitude is the most important factor in the quality of life for seniors.

As I left, Mrs. Bassett pointed out a luxuriant maiden hair fern gracing the front patio where many other beautiful plants thrived.

"This fern belonged to my mother who had it a long time. It's 70 years old and very dear to me. It's in the original container."

I could hardly believe Mrs. Bassett, but I did. I could believe anything about her.

The fern's keeper didn't seem to think it any great miracle the fern had survived so long. And apparently the fern doesn't think so either.

Without a doubt attitude is everything with seniors. Even plants.

# Floral Gardening Club's new season in full bloom

The Floral Garden Club will resume its monthly meetings Friday.

The club was organized in 1956. Members chose the hibiscus as the club flower and adopted the motto, "We grow that we might better live." The club also has a theme, "Plant seeds, discover life and learn by doing."

The Club meets at 1:30 p.m. on the second Friday of each month from September through May at the Floral City Community Building on Orange Avenue in Floral City.

Officers for the coming year are **Dorothy Clark**, president; **Marcia Beasley**, first vice-president; **Barbara Littlefield**, second vice-president; **Marie Jones**, recording secretary; **Caroline Gazzano**, corresponding secretary; and **Dorothy Colarusso**, treasurer.

Clark said meeting time is spent sharing ideas and working on projects. Last year, the women planted a Constitution garden of red, white and blue petunias at the Floral City Elementary School.

Clark said the club also has a junior gardener program. Last year, 17 girls from a Floral City Girl Scout troop took part. Two of these girls, **Brooke Banta** and **Mary Beth Hicks**, were chosen by their peers to attend the Wekiva Youth Camp in Wekiva Springs, near Deland, for a week this summer.

Anyone interested in joining the

Mary  
Zaccardi

Floral  
City





Photo by Olie Stonerook

Tim Johnston is shown busy at work at the Citrus County Extension Office in Inverness.

the public with gardening.

"It's a 50-hour intensive course, and after completing it, the Master Gardener owes 100 hours in volunteer time," explains Johnston.

The Master Gardeners hold clinics twice monthly at the Coastal Region Library in Crys-

tal River.

The Extension Service has thousands of brochures to help people on a variety of topics. They are distributed free of charge. All of the programs offered by the Extension Service are public service programs. There is no charge for services provided.

## Garden clubs active in Citrus County

Citrus County has several active garden clubs.

The Floral City Garden Club meets the second Friday of the month from September through May in the Floral City Community Center. The meeting social begins at 1 p.m., with the business meeting following at 1:30 p.m. Annual dues are \$7.50.

## Garden group meets May 8 at noon luncheon

The Floral City Garden Club will meet May 8. Members will car pool at the Floral City Community Building at 11:30 a.m. to gather for a luncheon at the Crown Hotel in Inverness at noon. An installation of officers will take place at this meeting finale. Clarice Jordon of the Inverness Garden Club will be the installing officer. The new officers will be: Dorothy Clark, president; Eleanor Grandon, first vice president; Winifred Jennings, second vice president; Dorothy Colarusso, treasurer, and Marie Jones, recording secretary. The Garden Club meets the second Friday of each month from September until May. New members are always welcome to join.



*Clarice Jordon  
installing Dorothy Clark  
as president.*

## Garden Club plans lunch for May 8

The Floral Garden Club will have a luncheon at the Crown Hotel on May 8. Clarice Jordon of the Inverness Garden Club will install new officers for the coming season. Members will meet at the Floral City Community Building at 11:30 a.m. for a ride to Inverness. The Garden Club will resume meetings on Sept. 11, and anyone interested in becoming a member will be welcome.







# The Florida Gardener

## gardening the lazy way or How to Save your Back!

...A Staff Feature

Would you like to have a beautiful garden without bending, stooping, or crawling around on your knees? Dorothy Clark of Floral City, who signs her letter "Yours for easier gardening" may have just the solution for you.

While vacationing in West Virginia a few years ago, the Clarks saw a newspaper article describing a 64 Sq. Ft. raised garden — the "ultimate lazy man's garden."

The article described the raised garden, the foundation of which was constructed of ten 4x4's, about 3 feet high. On these legs was built a water board platform, which was then framed with 2x4's — all in pressure treated lumber to prevent rotting. The legs on one side were 1" longer than those on the other to insure proper drainage. Quarter-inch holes were drilled six inches apart on the lower side, one inch apart along the middle. There were no holes on the upper side. Screen wire was placed over the holes to prevent too much loss of soil.

These were the instructions that the Clarks followed. The original plan called for 1 foot square sections for each separate vegetable. In fact, the idea had come to the West Virginia gardener from a TV show entitled "Square Foot Gardening", featuring raised 12"x12" beds on the ground, framed in by cross-ties. Square-Foot gardening sounded great, he thought, but "Why crawl around on your knees?"

The Clarks agree, and have had great results with little effort. "In the 16 ft. x 4 ft. garden," she writes, "there are four tomato plants, parsley, sweet onions, green onions, spinach, beets, carrots, turnip greens, Chinese cabbage, head lettuce, bibb lettuce, one cabbage and three broccoli plants. ...found out that 12x12 is not a large enough space so use 12x24 for most except beans....used 24x24 for them."



Table-top gardening has many advantages besides "no stoop, no bend." Less water is used since a single sprayer hose down the middle of the table takes care of the watering while you sit nearby and read a magazine. The controlled growing medium, which can be sterilized, eliminates soil borne insects and diseases (including moles). Cultivation is simple; the only "tools" Dorothy uses are a trowel, hand cultivator, or a fork. "I can cultivate the whole garden," she says, "in a half hour".

Where the winters are relatively mild (as in most of Florida), one might eat from a table-top garden all winter. The Clarks covered their garden "quite a few nights" with a plastic tarp. "The tomatoes were nipped", she writes, "where the tarp touched them, but after cutting off the dead ends, new growth appeared along with blossoms". (in February!)

The Clarks are making some adjustments from the original plans, as Floridians always must do when they adopt ideas from other sections of the country. Heavy Florida rains have necessitated drainage holes throughout instead of just on the lower side. More peat and perlite should have been used to prevent the ground from staying too wet, she writes. The Extension Agent informed her that she could have used builder's sand instead of perlite — a much cheaper soil additive. Nurserymen, he explained, use perlite because it is lighter and makes the containers easier to handle.

Dorothy's husband estimates that the table garden cost about \$100 — much less than the price of the rototiller which they sold since it was no longer needed.

"I really love the table top garden," says Dorothy. "It satisfies my urge to have a garden without breaking my back."



## Floral Garden Club to meet

Floral Garden Club will have its monthly meeting on Jan. 10, at 1 p.m. at the Community Building, Floral City. Tim Johnson, county Extension agent, will speak on gardening in Florida. Anyone interested is invited to attend.



ADVERTISING

ADVERTISING

ADVERTISING

# Extension Service provides information for better living

The Citrus County Cooperative Extension Service, 3600 S. Florida Avenue on U.S. 41, next to the County Auditorium, in Inverness, provides educational programs and information to improve the quality of life.

The Extension Service is part of the Institute of Food and Agricultural Sciences, University of Florida (IFAS). It is a statewide organization dedicated to teaching, research and extension. Faculty members are located in Gainesville at the university, at 23 Research and Education Centers and at 67 County Extension offices throughout the state.

IFAS is funded by state, federal and local government, and by gifts and grants from individuals, foundations, government and industry.

"The word 'co-op' is a good one," says Andy Rose, director

of the county extension service.

The Citrus County Cooperative Extension Service has four county agents. Rose also specializes in commercial agriculture, such as nursery, plant brokering and farming.

"I work with the growers and agricultural producers," he says.

Paula Stanley serves as the county's home economics agent, providing education, advice and solutions to home problems, such as sewing, canning, cooking, weight control, food and nutrition, household budgets and child care.

The 4-H agent is Lisa Martin, who supervises all the 4-H clubs in the county. 4-H is a youth program teaching children about farm skills and agriculture. 4-H projects also cover a variety of subjects, such as cloth-

ing construction, small engines, conservation, safety, home improvement, leadership and gardening. At the Canning Center in Lecanto, Pearl Maynard, the canning center operator, helps people can and tells them how to cook vegetables and fruits, providing health information they need to know in canning.

Tim Johnston serves as the county's homeowner horticulture agent. He teaches people how to care for lawn grasses, vegetable gardens, household plants, what to do about snakes, rodents and weeds, and how to control and combat insects and plant diseases.

"I get 200 to 350 calls a week," he says. "I help people with garden, tree, lawn and household insect problems."

He also presents programs, such as lawn care seminars. Weekly classes are held in the office at 2 p.m. on Tuesday. Monthly meetings are held the second Wednesday of the month at 9 a.m. at the Mid-State Federal Savings & Loan in Beverly Hills.

He also supervises the Florida Master Gardener Program, which trains volunteers to help

# Art in the Park Show offers a full schedule of events

Barbara Littlefield will be the featured artist at the 1989 Art in the Park Art Show sponsored by the Crystal River Lions and Lioness Clubs. The art show is scheduled for Oct. 7, 1989 from 9 a.m. to 5 p.m. with a full day of activities and entertainment planned for the entire family.

Littlefield is one of Citrus County's own artists. She is a member of the Citrus County Art League. Littlefield began her art career at the age of 10.

According to Littlefield, during the Depression of 1930, a group of well-known artists in Portland, Maine, formed an Art Association and gave free lessons in charcoal drawing and painting every Saturday for all children from 10 years of age and over who were still in school.

She took lessons from this association for several years. During her high school years, she studied with William Dow, a local high school art instructor. She has painted in oils for 40 years. While residing in Bennington, Vt., she taught adult classes in art at night at

the local high school.

Since retiring to Florida in 1980, she has studied watercolor with Frank Kuhner, Joe Bucciante, and Gardiner Giles. She has won numerous blue ribbons and best-of-show awards at area art shows and fairs.

*Barbara is an active member of our Floral Garden Club. She is a past president.*

2/9/89

Floral Garden Club will meet Friday. The board will meet at noon. A white elephant sale will begin at 12:30 p.m. at the Floral City Community Building. The business meeting will begin at 1:30 p.m. and a workshop on flower arrangement will follow. Call 726-6070.

**Garden club** 4/14/89

The Floral Garden Club will picnic Friday at the home of Arlene Sokol on Baker Street. Members should bring a covered dish and meet at 11:30 a.m. at the Floral City Community Building to car pool.

6/8/89

Floral Garden Club will meet today at the Community Hall. The board will meet at noon, followed by a social time at 1 p.m. and the business meeting at 1:30 p.m. Jim Brooks of Swiftmud will be the guest speaker. The public is invited to attend. Call 726-6070.

**Floral City** Sept 2-89

■ ■ **Garden Club:** The officers and board members of the Floral Garden Club will meet at 9:30 a.m. Tuesday at the home of Doris Sawyer to make plans for the coming year. Club members will meet at 1 p.m. Friday at the Floral City Community Building. This year's club theme is "Let's Put the Floral Back in Floral City." Guests are welcome. Hostesses for the day are Marie Morris, Lois Neal and MonaBelle Turpin. Call 344-3711.

**Floral City** 10/12/89

■ **Garden Club:** The Floral Garden Club will meet Friday at the Floral City Community Building. The board will meet at 12:30 p.m. The business meeting will begin at 1 p.m. Miriam Cohen will present the program "Floral City Old Oak Trees" at 2 p.m., followed by a social hour at 3 p.m. Visitors are welcome. Call 344-3711.



WELCOME  
TO MY  
WORLD



# WELCOME TO MY WORLD

## A Standard Home Flower Show

*Free to the Public*

Saturday, December 3

9 am - 5 pm

Sunday, December 4

1 pm - 4 pm

at

**Catalina Villa  
Model Home**

The Landings  
at Inverness  
(E. Gospel Island  
Rd. 470)

*Presented by*

**FLORAL GARDEN CLUB**

*an affiliate of the Florida State  
Federation & the National  
Council of State Garden Clubs*

*in cooperation with*

**GOLD MARK HOMES**



H O M E S

**The mark of excellence  
in waterfront communities.**





# WELCOME TO MY WORLD

*Presented by*

## FLORAL GARDEN CLUB

*in cooperation with*

## GOLD MARK HOMES

### STANDARD HOME FLOWER SHOW COMMITTEE

Chairman ..... Barbara Littlefield

Schedule/Staging ..... Marcia Beasley

Horticulture:

Entries/Classification ..... Virginia Ankrom  
Constance Henning

Design:

Entries/Classification ..... Mary Pritchard

Awards Chairman ..... Marie Jones

Judges' Chairman ..... Marie Morris

Clerks' Chairman ..... Dorothy Clark

Hostess' Chairman ..... Doris Sawyer



## GENERAL RULES

1. In every respect, this show will comply with the objectives and requirements for a Standard Home Flower Show as established by the National Council of State Garden Clubs, Inc., 1987.
2. All horticulture and design classes are open to amateur growers and designers of the Floral Garden Club.
3. Plants on the Florida Conservation Lists which have been legally obtained and are properly named may be used in all Design Classes. If grown by the exhibitor, they may be used in the Horticulture Division.
4. Advance registration is required for the limited number of entries of both Horticulture and Designs.
5. Entries will be received from 9 am to 12 pm on Friday, Dec. 2 and removed between 4 pm and 4:30 pm on Sunday, Dec. 4, 1988.
6. All exhibits must be checked by the Classification Chairman of the respective divisions before the Exhibitor places the design or horticulture exhibit. The Classification Committees are the final authority in disqualifying entries not conforming to the Schedule.
7. Judging will begin promptly at 4:00 pm, Friday, Dec. 2. Only required personnel will be allowed in the show house during judging.
8. All care will be taken to safeguard exhibits. All properties should be inconspicuously marked with the name of the exhibitor. NEITHER GOLD MARK HOMES CORPORATION, THE MEMBERS OF THE FLORAL GARDEN CLUB, NOR THE FLOWER SHOW COMMITTEE WILL ASSUME LIABILITY FOR DAMAGE OR LOSS.
9. Because advance entries are required, Exhibitor must provide a substitute if unable to participate.





## AWARDS

1. If merited, two BEST-IN-SHOW (rosette of three blue ribbons) may be awarded; one each in Horticulture Division and one in Design Division. All Classes in each division are eligible.
2. Two SWEEPSTAKES AWARDS (rosette of green and white ribbons) will be awarded; one each in Horticulture Division and one in Design Division to the Exhibitors winning the largest number of awards (Most blue ribbons). In case of tie, red ribbons will be counted.
3. A Floral Garden Club AWARD OF APPRECIATION will be presented to the Gold Mark Homes Corporation.

STANDARD SYSTEM OF JUDGING AND AWARDING will be used for this Standard Home Flower Show. The Standard System allows only one (1) first (blue), one (1) Second (red), and one (1) third (yellow) ribbon to be awarded in each class or each subclass, if merited. One (1) or more honorable mention (white) ribbon may be given in a class or subclass, when merited.

The SCALE OF POINTS in the HANDBOOK FOR FLOWER SHOWS 1987 will be used for Division I Horticulture.

The following SCALE OF POINTS will be used for Division II, Designs:

Conformance .....	15 points
Design .....	35
Distinction .....	15
Suitability of material for type, placement or occasion .....	20
Creativity and expression .....	15
	<hr/>
	100 Points



## DIVISION I - Horticulture

### Additional Rules:

1. Plants must have been grown by the exhibitor for at least three months prior to the Show.
2. More than one (1) entry per class may be made by an exhibitor, provided each is a different cultivar, type or color.
3. One variety of plant and one plant per container, except in multiple growth plants.
4. Plants should be show-worthy, well-groomed (clean with water only), free from disease and insect imperfections.
5. The exhibitor will furnish clean containers which are appropriate for the location in which the plant is staged. Double potting is permitted.
6. All horticulture specimens must be labeled with the correct botanical name (genus and species), variety or cultivar, when possible. (The common name will be added).



**Division I  
HORTICULTURE CLASSES**

- Class 1. Container plants grown for their bloom**  
Limited to appropriate containers not more than 8 inches in diameter. Plants will be exhibited on the window sill of the Dinette, Kitchen Area.
- 2. Succulents and/or other foliage plants**  
Limited to appropriate containers not more than 8 inches in diameter. Plants will be exhibited on the window sill of the Master Bedroom.
- 3. Foliage Plants grown for their decorative foliage**  
Limited to the appropriate containers not more than 12 inches in diameter and over all height of 18 inches. Type of plant and size will be appropriate for the location individually specified within this class.
- a. Exhibited on end of Kitchen Counter.
  - b. Exhibited on end of desk, Living Room.
  - c. Exhibited on left side, dresser in Master Bedroom.
  - d. Exhibited on end table in Den.
  - e. Exhibited on floor right corner Master Bedroom.
  - f. Exhibited on floor right corner Master Bedroom.
- 4. Foliage Plants grown for their decorative foliage**  
Limited to appropriate containers not more than 10 inches in diameter nor 4 feet in height. Type of plant and size will be appropriate for the location individually specified within this class.
- a. Exhibited on floor in entry corner of Dining room.
  - b. Exhibited on floor in right corner of Dinette, Kitchen area.
  - c. Exhibited on floor in left corner of Dinette, Kitchen area.
  - d. Exhibited on floor by chair in Master Bedroom.
  - e. Exhibited on floor under window in Master Bedroom.
  - f. Exhibited on floor in corner by round bedside table, Master Bedroom.



g. Exhibited on floor by chair in Den.

5. **Foliage plants grown for their decorative foliage**

Limited to appropriate containers in excess of 10 inches in diameter and more than 4 feet overall height. Type of plant and size will be appropriate for the location individually specified within this class.

- a. Exhibited on floor, right wall - corner of Living Room.
- b. Exhibited on floor, right corner in Master Bedroom.
- c. Exhibited on floor in Hallway of Guest Wing.
- d. Exhibited on floor, left corner next to couch in Den.

Class 6. **Horticulture specimens which cascade or are grown in appropriate hanging containers**

Type of plant and size will be appropriate for the location individually specified within this class. (All these specimens will be staged in laundry room for judging.)

- a. Exhibited in the Laundry Room.
- b. Exhibited in the Laundry Room.
- c. Exhibited on the Corner of dresser in Guest Bedroom.
- d. Exhibited on left corner of closet wall in Master Bedroom.
- e. Exhibited on right corner of closet wall Master Bedroom.
- f. Exhibited on armoire in Master Bedroom.

**DIVISION II  
Design Classes**

Additional Rules:

- 1. Wherever possible Fresh Plant Material will be used.
- 2. Each design must be created and placed by one (1) exhibitor. Only one (1) exhibit is permitted by an exhibitor in each class.



**Division II-Design Classes, Cont. from page 6**

3. The type of floral design, choice of plant material and size of arrangement are at the discretion of the individual designer. The exhibit will be appropriate for the location specified within the class entered.
4. The designer must personally view the individual location at the model site. See chairman for photo reference.
5. Plant material/s used in designs will be listed on the entry card.
6. The exhibitor must keep their exhibits in good condition for the duration of the show.
7. The following ARE permitted in all classes of THIS show:
  - a. Dried and/or treated plant material.
  - b. Contrived flowers and/or plant forms constructed of recognizable plant material.
  - c. Accessories in classes 7, 8, 9 and 10.
  - d. Embellishments on dried and/or treated plant materials.
  - e. Seafans and coral.
8. The following ARE NOT permitted in ANY Standard Flower Show.
  - a. Artificial flowers, fruit or foliage.
  - b. Natural bird's nests, "stuffed birds", butterflies or other insects; fish, birds or animals.
  - c. The use of flatware on table sections.
  - d. Landscapes and/or scenes.
  - e. The flag of the United States in a design.
  - f. Living plants (growing plants with roots).
9. The following ARE NOT permitted in THIS Standard Home Flower Show:
  - a. Cut fresh fruit or prepared food/s.
  - b. Sponges, bones, antlers, etc.
  - c. Plastic holiday accessories.
  - d. The use of the color RED.
  - e. Embellishment of fresh plant material.
  - f. Accessories in Class II.



## **DIVISION II - DESIGN**

### **Design Classes**

(All decorative classes)

- Class 7. Design suitable for an unset table. Design will be appropriate for the location individually specified within this class. Walls are white, furniture is taupe, salmon and grey. Rug is beige.
- a. Exhibited on a 70" x 40" wide glass top table, Dining Room.
  - b. Exhibited on a round pine wooden table 41" in diameter, Dinette.
  - c. Exhibited on a cream and peach patio round table 41" in diameter, on the lanai.
  - d. Exhibited on a round Salmon-colored coffee table 41" in diameter, Living Room.
8. Design suitable for the Master Bedroom Suite. Each design will be appropriate for the individually specified location within this class. Walls are white, furnishings are taupe, salmon and grey. Rug is beige.
- a. Exhibited on a patterned cloth-covered round bedside table 30" diameter, and under lamp. Lower edge of shade is 19" from table top.
  - b. Exhibited at the right end of the lavatory counter. Design will be reflected in mirror, counter is cream, lavatory is 10" from wall. A wicker basket of towels is between lavatories.
  - c. Exhibited at the left end of the lavatory counter. Design will be reflected in mirror, counter is cream, from end of counter to lavatory is 11". A wicker basket of towels is between the two lavatories.

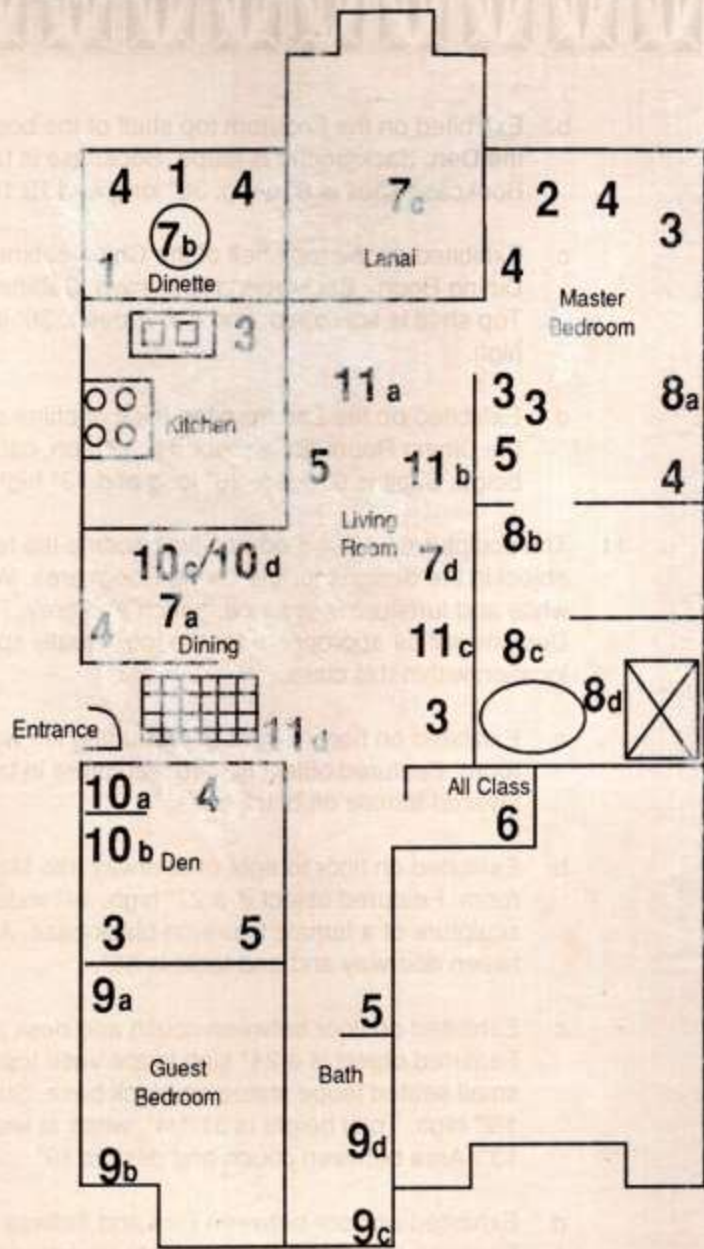


- d. Exhibited on back of water closet in Shower Room. Underlay is white ceramic 7" wide, 18 1/2" deep. Design will be against a white wall with a towel rack above. Towel may be used at designer's choice.
9. Designs suitable for the Guest Bedroom and Bath. Each design will be appropriate for the individually specified location within this class. Walls of rooms are white, bath fixtures are white, bedspread and table covers are salmon. Rattan and wooden accessories are used. Taupe for furniture-beige rug.
- a. Exhibited on the round bedside table draped in salmon, 24" diameter. Lamp on table. Lower edge of shade is 16" from table top.
  - b. Exhibited on the round table 24" in diameter, draped in salmon located in window corner of room. Design may be seen from outside windows at entryway. Windows are without drapes or blinds.
  - c. Exhibited on fan-shaped window ledge in guest bathroom and above bath tub. Ledge is 5" deep and 46" wide, 24" at center height.
  - d. Exhibited on back of water closet. Underlay is white ceramic 18 1/2" wide and 8" deep. All white area. No towel rack above.
- Class 10. Design suitable for the Den or Dining Area. Each design will be appropriate for the individually specified location within this class. Walls are white, furniture is taupe, salmon and grey. Rug is beige.
- a. Exhibited on the top shelf of the bookcase in the Den. Background is taupe. Bookcase top of shelf is scalloped. Shelf is 4 1/2" deep and 36" long and 10" high.



- b. Exhibited on the 2nd from top shelf of the bookcase in the Den. Background is taupe. Bookcase is taupe. Bookcase shelf is 6" deep, 36" long and 13 1/4" high.
  - c. Exhibited on the top shelf of the China cabinet in the Dining Room. Background is salmon. Cabinet is beige. Top shelf is scalloped, and 4 1/2" deep, 36" long and 10" high.
  - d. Exhibited on the 2nd from top shelf of china cabinet in the Dining Room. Background is salmon, cabinet is beige. Shelf is 6" deep, 36" long and 13" high.
11. The sculptures of this modern villa become the featured object in the designs for the Living Room area. Walls are white and furniture is in taupe, peach and grey. Rug is beige. Designs will be appropriate for the individually specified location within this class.
- a. Exhibited on floor in front of protruding left wall of living room. Featured object is a 46" sculpture in taupe of a stylized female on black base.
  - b. Exhibited on floor to right of doorway into Master Bedroom. Featured object is a 27" high, 14" wide, taupe sculpture of a female figure on black base. Area between doorway and end table is 36".
  - c. Exhibited on floor between couch and desk area. Featured object is a 24" high taupe vase topped by a small seated taupe statue on black base. Statuary is 13 1/2" high. Total height is 31 1/4", width at widest area is 13". Area between couch and desk is 49".
  - d. Exhibited on floor between Den and hallway at entry. Featured object is a taupe female sculpture on a 12" high, 12" deep and 18" wide black base. Sculpture height is 17", width is 16" and depth is 10". Total overall height is 29" and wall area is 51" wide.





**Catalina Villa**

Dec - 1988

WELCOME TO MY WORLD

A Standard Home Flower Show

Free to the Public

Saturday, December 3 9 am - 5 pm  
Sunday, December 4 1 pm - 4 pm

at

Catalina Villa Model Home

The Landings at Inverness  
(E. Gospel Island Rd. 470)

presented by

FLORAL GARDEN CLUB

an affiliate of the Florida State Federation & the National  
Council of State Garden Clubs

in cooperation with GOLD MARK HOMES

1988

STANDARD HOME FLOWER SHOW COMMITTEE

Chairman.....Barbara Littlefield  
Schedule/Staging.....Marcia Beasley  
Horticulture:  
  Entries/Classification.....Virginia Ankrom  
Design:  
  Entries/Classification.....Mary Pritchard  
Awards Chairman.....Marie Jones  
Judges' Chairman.....Marie Morris  
Clerks' Chairman.....Dorothy Clark  
Hostess' Chairman.....Doris Sawyer

## GENERAL RULES

1. In every respect, this show will comply with the objectives and requirements for a Standard Home Flower Show as established by the National Council of State Garden Clubs, Inc. 1987.
2. All horticulture and design classes are open to amateur growers and designers of the Floral Garden Club.
3. Plants on the Florida Conservation List which have been legally obtained and are properly named may be used in all Design Classes. If grown by the exhibitor, they may be used in the Horticulture Division.
4. Advance registration is required for the limited number of entries of both Horticulture and Designs.
5. Entries will be received from 9 am to 12 pm on Friday, Dec. 2, and removed between 4 pm and 4:30 pm on Sunday, Dec. 4, 1988.
6. All exhibits must be checked by the Classification Chairman of the respective divisions before the Exhibitor places the design or horticulture exhibit. The Classification Committee is the final authority in disqualifying entries not conforming to the Schedule.
7. All care will be taken to safeguard exhibits. All properties should be inconspicuously marked with the name of the exhibitor. NEITHER GOLD MARK HOMES CORPORATION, THE MEMBERS OF THE FLORAL GARDEN CLUB, NOR THE FLOWER SHOW COMMITTEE WILL ASSUME LIABILITY FOR DAMAGE OR LOSS.
8. Because advance entries are required, Exhibitor must provide a substitute if unable to participate.

## AWARDS

1. If merited, two BEST-IN-SHOW (rosette of three blue ribbons) may be awarded one each in Horticulture Division and one in Design Division. All Classes in each division are eligible.
2. Two Sweepstakes Awards (rosette of green and white ribbons) will be awarded one each in Horticulture Division and one in Design Division to the Exhibitors winning the largest number of awards. (Most blue ribbons) in case of tie red ribbons will be counted.
3. A Floral Garden Club award of Appreciation will be presented to the Gold Mark Homes Corporation.

Standard System of Judging and Awarding will be used for this Standard Home Flower Show. The Standard System allows only one (1) first (blue), one (1) Second (red), and one (1) third (yellow) ribbon to be awarded in each class or each subclass, if merited. One (1) or more honorable mention (white) ribbon may be given in a class or subclass, when merited.

The Scale of Points in the HANDBOOK FOR FLOWER SHOWS 1987 will be used for Division 1 Horticulture.

The following Scale of Points will be used for Division 2, Designs:

Conformance.....	15 points
Design.....	35
Distinction.....	15
Suitability of material for type, placement or occasion.....	20
Creativity and expression	15
	<u>100 Points</u>

## DIVISION I - Horticulture

## Additional Rules:

1. Plants must have been in the possession of and grown by the exhibitor for at least three months prior to the Show.
2. More than one (1) entry per class may be made by an exhibitor, provided each is a different cultivar, type, or color.
3. One variety of plant to a container.
4. Plants should be show-worthy, well-groomed (clean with water only), free from disease and insect imperfections.
5. The exhibitor will furnish clean containers which are appropriate for the location in which the plant is staged.
6. All horticulture specimens must be labeled with the correct botanical name (genus and species), variety or cultivar, when possible. (The common name will be added).

## HORTICULTURE CLASSES

- Class 1. *Saintpaulia* (African Violets)  
 Limited to appropriate containers not more than 8 inches in diameter. Plants will be exhibited on the window sill of the Dinnette, Kitchen Area.
2. Succulents  
 Limited to appropriate containers not more than 8 inches in diameter. Plants will be exhibited on the window sill of the Master Bedroom.
3. Foliage Plants grown for their decorative foliage.  
 Limited to appropriate containers not more than 12 inches in diameter and over all height of 18 inches. Type of plant and size will be appropriate for the location individually specified within this class.
- Exhibited on end of Kitchen Counter.
  - Exhibited on end of desk, Living Room.
  - Exhibited on left side, dresser in Master Bedroom.
  - Exhibited on end table in Den.
  - Exhibited on floor right corner Master Bedroom.
  - Exhibited on floor right corner Master Bedroom.
4. Foliage Plants grown for their decorative foliage.  
 Limited to appropriate containers not more than 10 inches in diameter and overall height of 4 feet. Type of plant and size will be appropriate for the location individually specified within this class.
- Exhibited on floor in entry corner of Dining room.
  - Exhibited on floor in right corner of Dinnette, Kitchen area.
  - Exhibited on floor in left corner of Dinnette, Kitchen Area.
  - Exhibited on floor by chair in Master Bedroom.
  - Exhibited on floor under window in Master Bedroom.
  - Exhibited on floor in corner by round bedside table, Master Bedroom.
  - Exhibited on floor by chair in Den.
5. Foliage plants grown for their decorative foliage.  
 Limited to appropriate containers in excess of 10 inches in diameter and more than 4 feet overall height.  
 Type of plant and size will be appropriate for the location individually specified within this class.
- Exhibited on floor, right wall - corner of Living Room.
  - Exhibited on floor, right corner in Master Bedroom.
  - Exhibited on floor in Hallway of Guest Wing.
  - Exhibited on floor, right corner next to couch in Den.

Class 6. Horticulture specimens which cascade or are grown in appropriate/containers. (hanging)

Type of plant and size will be appropriate/for the location individually specified within this class. All these specimens will be staged in laundry room for judging.

- a. Exhibited in the Laundry Room.
- b. Exhibited in the Laundry Room.
- c. Exhibited on the Corner of dresser in Guest Bedroom.
- d. Exhibited on left corner of closet well in Master Bedroom.
- e. Exhibited on right corner of closet wall Master Bedroom.
- f. Exhibited on armoire in Master Bedroom.

*6 A R. Kenny*



DIVISION II - DESIGN  
(all Decorative Classes)

## Additional Rules:

1. Wherever possible Fresh Plant Material will be used.
2. Each design must be created and placed by one (1) exhibitor. Only one (1) exhibit is permitted by an exhibitor in each class.
3. The type of floral design, choice of plant material and size of arrangement are at the discretion of the individual designer. The exhibit will be appropriate for the location specified within the class entered.
4. The following are permitted in all classes of this show:
  - a. Dried and/or treated plant material.
  - b. Contrived flowers and/or plant forms constructed of recognizable plant material.
  - c. Accessories.
  - d. Embellishments on dried and/or treated plant materials.
  - e. Seafans and coral.
5. The use of any part/s of plants on the State Conservation list is strickly prohibited.
6. Plant material/s used in designs will be listed on the entry card.
7. The following are not permitted in ANY Standard Flower Show.
  - a. Artificial flowers, fruit or foliage.
  - b. Natural bird's nests, "stuffed birds", butterflies or other insects; fish, birds or animals
  - c. The use of flatware on table sections.
  - d. Landscapes and/or scenes.
  - e. The flag of the United States in a design.
  - f. Living plants (growing plants with roots).
  - g. Embellishment of fresh plant material.
8. The following are not permitted in this Standard Home Flower Show:
  - a. Cut fruit or prepared food/s.
  - b. Sponges, bones, antlers, etc.
  - c. Plastic holiday accessories.
  - d. The use of the color RED.
9. The exhibitor must keep their exhibits in good condition for the duration of the show.

## DIVISION II - DESIGN

DESIGN CLASSES  
(all decorative classes)

- Class 7. Design suitable for an unset table. Design will be appropriate for the location individually specified within this class.
- a. Exhibited on a 70" x 40" wide glass top table, Dining Room.
  - b. Exhibited on a round pine wooden table 41" in diameter, Dinnette.
  - c. Exhibited on a cream and peach patio round table 41" in diameter, on the launi.
  - d. Exhibited on a round Salmon color coffee table 41" in diameter, Living Room.
8. Design suitable for the Master Bedroom Suite. Each design will be appropriate for the individually specified location within this class.
- a. Exhibited on a patterned cloth-covered round bedside table 30" diameter, and under lamp. Lower edge of shade is 19" from table top.
  - b. Exhibited at the right end of the lavatory counter. Design will be reflected in mirror, counter is cream, lavatory is 10" from wall. A wicker basket of towels is between lavatories.
  - c. Exhibited at the left end of the lavatory counter. Design will be reflected in mirror, counter is cream, from end of counter to lavatory is 11". A wicker basket of towels is between the two lavatories.
  - d. Exhibited on back of water closet in Shower Room. Underlay is white ceramic 7" wide, 18 1/2" deep. Design will be against a white wall with a towel rack above. Towel may be used at designer's choice. Walls are white.
9. Designs suitable for the Guest Bedroom and Bath. Each design will be appropriate for the individually specified location within this class. Walls of rooms are white, bath fixtures are white, bedspread and table covers are salmon. Ratan and wooden accessories are used.
- a. Exhibited on the round bedside table draped in salmon, 24" diameter. Lamp on table. Lower edge of shade is 16" from table top.
  - b. Exhibited on the round table 24" in diameter, draped in salmon located in window corner of room. Design may be seen from outside windows

## DIVISION II - DESIGN (cont.)

at entryway. Windows are without drapes or blinds.

- c. Exhibited on fan shaped window ledge in guest bath-room and above bath tub. Ledge is 5" deep and 46" wide, 24" at center height.
- d. Exhibited on back of water closet. Underlay is white ceramic 18½" wide and 8" deep. All white area. No towel rack above.

Class. 10. Design suitable for the Den or Dinning Area. Each design will be appropriate for the individually specified location within this class.

- a. Exhibited on the top shelf of the bookcase in the Den. Background is taupe. Bookcase top of shelf is scalloped. Shelf is 4½" deep and 36" long and 10" high.
- b. Exhibited on the 2nd from top shelf of the bookcase in the Den. Background is ~~taupe~~. Bookcase is taupe. *Salmon* Bookcase shelf is 6" deep, 36" long and 13½" high.
- c. Exhibited on the top shelf of the China cabinet in the Dinning Room. Background is ~~taupe~~. Cabinet is *Salmon* beige. Top shelf is scalloped, and 4½" deep, 36" long and 10" high.
- d. Exhibited on the 2nd from top shelf of china cabinet in the Dinning Room. Background is taupe, cabinet is beige. Shelf is 6" deep, 36" long and 13" high.

11. The sculptures of this modern villa become the featured object in the designs for the Living Room area. Walls are white and furniture is in taupe, peach and ~~pale blue~~. *grey* Rug is beige. Designs will be appropriate for the individually specified location within this class.

- a. Exhibited on floor in front of protruding left wall of living room. Featured object is a 46" sculpture in taupe of a stylized female (See photos).
- b. Exhibited on floor to right of doorway into Master Bedroom. Featured object is a 27" high, 14" wide, taupe sculpture of a female figure (see photo). Area between doorway and end table is 36".
- c. Exhibited on floor between couch and desk area. Featured object is a 24" high vase topped by a small seated taupe statue on black base. Statuary is 13½" high. Total height is 31½", width at widest area is 13". Area between couch and desk is 49".
- d. Exhibited on floor between Den and hallway at entry. Featured object is a taupe female sculpture on a

10.

DIVISION II - DESIGN (cont.)

black base. Total height is 17". Widest point is  
9 1/2" deep. Wall area is 57"

## Event shows that plants are form of art

By NEALE HUNTER  
Staff Writer

To show that plants are truly an art form that can be used in endless ways to enhance the home, garden club members and a local developer are joining forces.

"Welcome to My World", the Floral Garden Club's annual competition and showing of arrangements and plants, will allow the public to catch a glimpse at the many ways the living art can be used in the home.

The garden club has sponsored many exhibits and home flower shows in its 28 years, said Marcia Beasley, head of scheduling and staging for the event. But this is the first time they have ever worked with a local developer to showcase the floral arrangements in a model home.

The door to the Catalina Villa at The Landings at Inverness, off of Gospel Island Road, will be open on Saturday, Dec. 3 from 9-5 p.m. and on Sunday, Dec. 4 from 1-4 p.m. for the public to come and browse and view the various arrangements and ways that plants can be used to bring another form of art into the home.

Developer John Infantino agreed with the garden club members that floral arrangements and plants have become a vital part of the merchandising of homes.

"Flowers make up a part of the livability," he said.

Members will be hosting the open house, giving visitors information about the different entries, and explaining the different categories and ways that the arrange-



DISCUSSING THE upcoming Floral Garden Club's annual competition are (from left) Barbara Littlefield, John Infantino and

Marcia Beasley. (Chronicle Staff Photo)

ments have been formed, said chairman Barbara Littlefield.

There will be 20 entries in floral designs and 25 entries of plants, all showcased in the different rooms, from master bedroom, dining room, to bathrooms, she said.

Following the standards set by the National Council of State Garden Clubs, three judges from the Brooksville area will be judging each entry on the basis of conformance, design, distinction, suitability of material, and creativity and expression.

First, second, and third place prizes will be awarded in each class and subdivision,

as well as honorable mentions when applicable.

Two Best-In-Show awards will be given, one in the Horticulture Division and one in the Design Division.

Two Sweepstakes Awards will also be awarded to the exhibitor winning the largest number of blue ribbons in each division.

The garden club members will also be presenting an Award of Appreciation to Gold Mark Homes Corp.

"It's an amazing amount of work that has had to be done," said Mrs. Beasley, who

pointed out the numerous items which covered everything of the arrangements, to of materials can be used. And everything has to be set by the Standard Home she added.

"This is a way for us how you can use natural material to decorate the Mrs. Beasley. "Flowers another form of art and out getting this chance public."

# Floral Garden Club sets date for flower show

"Welcome To My World" is the theme of the Standard Home Flower Show to be presented by the Floral Garden Club of Floral City.

The show, which is free to the public, will be from 9 a.m. to 5 p.m. Dec. 3 and from 1 to 4 p.m. Dec. 4 in a Catalina Villa model home at the Landings on East Gospel Island Road in Inverness.

The flower show committee chairwoman is **Barbara Littlefield**. Schedule and staging chairwoman is **Marcia Beasley**; horticulture chairwomen are **Virginia Ankrom** and **Constance Henning**; design chairwoman, **Mary Pritchard**; awards chairwoman, **Marie Jones**; judges chairwoman, **Marie Morris**; clerks chairwoman and president of the club, **Dorothy Clark**; and hostess chairman, **Doris Sawyer**.

Entries will be received from 9 a.m. to noon Dec. 2 and removed between 4 and 4:30 p.m. Dec. 4. Participants are restricted to members of the Floral Garden Club.

Judging will begin at 4 p.m. Dec. 2. Only required personnel will be allowed in the show house during judging. Because advance entries are required, exhibitors must provide a substitute, if unable to participate.

Donna Pasiuk

Inverness



# Show brings color to model home

By ESTHER DUNCAN  
Chronicle Writer

**N**ot all artists in Citrus County work with paint brushes.

A walk through a model villa in one of Citrus County's developments last week-end proved that some artists use greenery for their artistic creations.

The "Catalina" model at The Landings in Inverness looked as if some secret elves had transformed it into a bower of greenery. Every room had its share of decorative blooms, foliage or cascading hanging plants.

Cut flowers. Arrangements of leaves. Twisted vines. Trimmed fronds. All had been artfully entwined throughout the villa. Some encircling statuary. Some creating eye-catching arrangements such as a centerpiece on a dining room table. Or mingling with a family portrait in the bedroom.

Even the lowly "john" had been used as a background for an artist's creation.

All because members of the Floral Garden Club of Floral City decided to prove that they could create a first class Standard Home Flower Show in a model, transforming whatever they found rather than depending on their own favored props. Free to the public, the show was called "Welcome To My World."

"We felt that artists who use

paints have been getting a lot of publicity lately," the president, Dorothy Clark, said. "Well, we're artists too. Only we use greenery instead of paint for our creations."

"This is a first in Citrus County," Barbara Littlefield, chairman of the show, said in offering the club's appreciation to John Infantino of Gold Mark Homes. "I don't believe any federated garden club has worked with a developer in putting on a flower show."

"We wanted to prove that we could create winning arrangements without depending on our own favorite props and, judging by the compliments we've been getting, we succeeded," she said.

The garden club approached Infantino because he had been sympathetic to the club members when serving as chairman of the committee that established a county tree ordinance, she explained. "We felt he would approve our desire to demonstrate to the public what can be done with natural materials from nature, using a model home's furnishings."

Founded 28 years ago and one of seven federated garden clubs in the county, its members' creations were judged according to federated garden club rules. All arrangements must be composed

Please see **Floral**, page 3C



**AN AWARD WINNING ARRANGEMENT** by a member of the Floral Garden Club is on display at their flower show which took place at the Landings in Inverness recently. (Photo by Esther Duncan)

Continued from page 10

of natural plant materials, using no artificial materials of any kind.

Class II was based on the model home's sculptures. Frances Simpson won the "Top of the Show" Award for Design for the innovative way she decorated a sculptured piece with loquat blooms, grapevines, aspidistra leaves, painted and dried palm tree blooms.

Wild grapevine, sagopalm, pampas grass and bromeliads in Barbara Littlefield's original composition won her second place in this class.

Third place was won by Marcia Beasley whose composition was created using palm fronds, dried and trimmed variegated pittisporum and dried pods.

Marie Morris won a first place with her arrangement of orange lilies and raffia in the guest bedroom. An arrangement of variegated sansevieria and bronze mums tucked in a bookshelf in the den won a first for Helen Lockrow.

Dorothy Sherman did wonders in decorating a shell lamp. Juanita Cole displayed her composition on the back of the commode in the master bathroom. Mary Pritchard chose a table on the patio for her interesting arrangement in Class 7.

Also in Class 7, utilizing an "unset dining table," Marcia Beasley was the winner with her creation that consisted of a painted tree branch, loquat blooms and trimmed sago palm fronds.

"Top of Show Award" for Horticulture was claimed by a super perfect Split Leaf Philodendron grown by Arlene Sokol.

Mona Belle Turpin, one of the entrants, said that she'd never entered a flower show before, adding that she thought she'd do a little better next year.

"It's been a lot of fun working with the furnishings in a model home," she said. "I hope we do it again."

Among those serving on the flower show committee: Virginia Ankrom and Constance Hennings, Horticulture; Marie Jones, Awards Chairman; Marie Morris, Judges' Chairman; Dorothy Clark, Clerk's Chairman; and Doris Sawyer, Hostess' Chairman.



*1st winner class 7  
marcia Beasley*



*"Top of the Show" class  
Awarded to Frances Simpson*





Horticulture, Division I Class 4-A  
Blue ribbon - Juanita Cole



Horticulture Division I  
Maree Blasley  
3rd place



"Top of Show Award"  
Horticulture  
Split Leaf Philodendron  
Arlene Sobel



Division II Design  
Class 7 B.C.



"Division II"  
Juanita Cole



Division II B Design



1st Marie Morris



Horticulture Division 5  
class 6 - A  
Ruth Kenny  
Swampstake Award

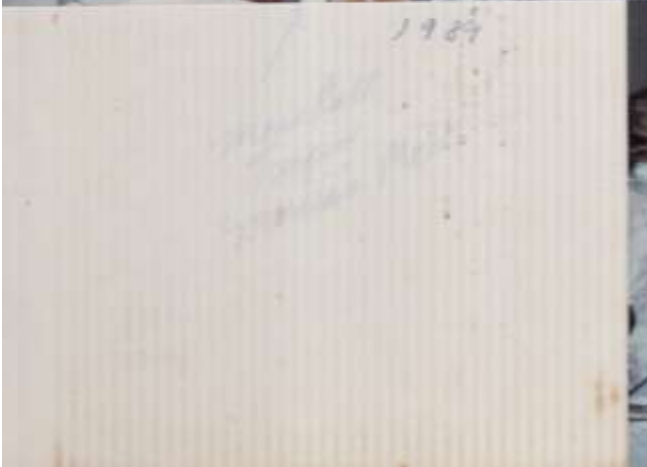


Dorothy Sherman  
class 6 - A  
1st



### Garden club installs officers

The Floral Garden Club recently installed its officers at the Central Motel in Inverness. The officers will serve for a term of two years. Seated at left, Clarice Jordan, installing officer; Marie Jones, standing in for Mary Pritchard who is not pictured; June Schmidt, new treasurer; standing from left, Barbara Littlefield, 1st vice president; Dorothy Colarusso, 2nd vice president; Kathleen Mueller, recording secretary, Carolyne Gazzano, corresponding secretary. (Chronicle staff photo)





Friday, July 21, 1989

Putting the 'floral' back in Floral City



Floral City Floral Garden Club Vice President Barbara Littlefield places a sign in the red, white and blue garden planted in front of the Floral City Post Office by club members, from left, Juanita Cook, Marie Jones, Marcia Beasley and Dorothy Clark. The sign encourages members of

the Floral City Community to 'Put the Floral Back Into Floral City'. The slogan is the club's theme for the coming two years. (Photo by Brad Yarnes)

Florida Federation of Garden Club  
District V Fall Meeting  
October 19, 1989



Beverly Hills Garden Club

J. Bristol

Ten members of our club attended

**FLORIDA FEDERATION OF GARDEN CLUBS, INC.**  
**DISTRICT V 1989 FALL MEETING**  
**OCTOBER 19, 1989**

THEME: "Splendor of Fall"

Hostess Club Beverly Hills Garden Club  
President Mrs. Henry Palys  
Chairman Mrs. Arsen Tapalzian  
Registration Mrs. Joseph Boka

\*\*\*\*\*

9:00 REGISTRATION AND HOSPITALITY

9:35 CALL TO ORDER – Mrs. Howard Weems  
District V Director

INVOCATION – Mrs. Harry Becker, Chpln.  
Beverly Hills Garden Club

PLEDGE – Mrs. Albert Hannell, Pres.  
Citrus Garden Club

WELCOME – Mrs. Henry Palys, Pres.  
Beverly Hills Garden Club

RESPONSE – Mrs. Paul Junkin  
Gainesville Garden Club

9:45 PROGRAM – FFGC OFFICERS

Mrs. Kenton H. Haymans, President  
Florida Federation of Garden Clubs, Inc.

Mrs. W. Reese Harris, 1st Vice-President

Mrs. Robert D. Wilson, 2nd Vice-President

Mrs. Alex H. Hilliard, 3rd Vice-President



10:45 STATE CHAIRMEN REPORTS

DISTRICT CHAIRMEN REPORTS

CLUB PRESIDENTS REPORTS

11:30 LUNCH BLESSING – Mrs. Harry Becker, Chpln.  
Beverly Hills Garden Club

RECESS

12:00 LUNCH

1:00 BUSINESS

Presentation of Awards and Certificates

Invitations to host District Meetings

Announcements

Table Prizes

Courtesy Resolution – Mrs. D. Raynor, President  
Homosassa River Garden Club

2:00 ADJOURN

\*\*\*\*\*

Beverly Hills Garden Club

## FLORAL CITY WOMAN'S CLUB

The Floral City Woman's Club in conjunction with the Garden Club will hold a special meeting on Nov. 7, at 1 PM at the Community Center, on Orange Ave. Safety instructions and procedures on cleaning up Old Floral City Rd from Rt. 48 to Gobbler Dr.. A 2 mile area adopted by the Woman's Club. Rt. 48 was adopted by the Garden Club. Mr. Jerry Clark instructor and coordinator of the Adopt-a-Road project is the speaker. November 13 at 9 am has been designated clean-up day. A few hours, 4 times a year to clean-up chosen highways and encourage others to help keep them clean.

Oct 31-89

## Session set for cleanup instructions

All those who expect to participate in the Floral City Cleanup Program on Nov. 13, meet at the Community Center on Orange Avenue at 2 p.m. Tuesday, Nov. 7, for the required instructional session.

For any further information call one of the following: Dot Clark (Floral Garden Club) 344-2339; Anna MacGlade (Floral City Women's Club) 726-7685, or Karen Sandvick (Civic Association) 726-5937.

## Extension agent talks to garden club

The next Floral Garden Club meeting is scheduled for Friday, Nov. 10 at the Community Building on Orange Avenue. Board meeting at 12:30 p.m.; general business meeting 1 p.m. and program 2 p.m.

Tim Johnston, agricultural agent from the County Extension Service, will be the guest speaker.

Awards will be presented to local residents recognized for yard and garden beautification.



By Doug Engle/The Chron

Volunteers walk the Trails End Road in Floral City picking up trash. The volunteers have adopted the highway as their own.

# Adopt-a-road plan smells of apple pie

By Gene Rudd

**I**MAGINE, IF YOU WILL, 1900 miles of roadway consisting of almost 12,000 acres of right-of-way. Then imagine what it would be like if you had to keep the potholes filled, fallen limbs removed from the driving surfaces on those 1900 miles, and keep all of the drainage ditches cleared and the prolific vegetation controlled. That's only a small fraction of the many duties we have laid on our County road maintenance people in Gerald Clark's Department of Public Works. Is it any wonder, then, that Gerry and his crew are anything less than fully enthusiastic about the newly created Adopt-A-Highway program? In reality, Adopt-A-Highway programs are the government employee's dream machine.

Adopt-A-Highway was created by a couple of clever men working for the Texas Department of Highway Maintenance in Tyler, Texas. It was the brainchild of Bobby Evans and Billy Black who counted on the inborn pride of their fellow Texans and particularly the traditional pride in the state's many beautiful highways. Evans and Black guessed right. Within a couple of years, almost every state highway in Texas was adopted and most of the counties and some cities followed suit. But Texas is not unique in having great pride. As of June of this year, 27 states had a program patterned after the Texas experience. Number 27 on the list — Florida.

But, did you know that Citrus County's Adopt-A-Highway program predates the state's program? That's right. Our governing body had the vision and wisdom to study the Texas program, modifying it as necessary to fit our local needs, and implement it in May of this year. A lot of the credit for getting it implemented deserves to be given to Commissioner Nick Bryant for his continuous support as the matter was debated, but none would deny that Gerry Clark has made it happen with his dedication to the idea.

For those who may still wonder what Adopt-A-

Highway is all about, let me briefly define it as: A program of committed civic, religious, environmental, business and other diverse organizations who voluntarily accept responsibility for beautification of a selected segment of our roadways through a cooperative relationship with the County's Department of Public Works and the governing Board of County Commissioners.

The most pressing immediate need is for the collection and removal of litter and other debris which mars the roadways' beauty. In later stages, roadside wildflowers and shrubs might be planted and tended by the adopting groups. And still farther down the pipe, one can envision an annual "Roadway Beautiful" award with erection of commemorative credit plaques featuring the sponsoring organization and the designer. Is it too bold to dream that Citrus County could one day have a weekend drive-through which would attract visitors from other areas who would come to view our beautiful roadways?

Before our dreams are realized, though, a great many problems will have to be solved. Our arteries will have to be modernized to accommodate our explosive growth, and our natural resources will have to be protected and cared for. And equally important is the need to solve the thoughtless and uncivilized littering which casts a pall on all our lives. Adopt-A-Highway programs will help us as we address the latter but only a generous taxpaying public can solve the roadway deficiencies. The help which Adopt-A-Highway offers is not even sufficient to eliminate the litter, but it is the best thing happening right now as some of our best minds look for ways to single out and correct the actions of those s'bs who discard their rubbish on our public property.

In trying to characterize someone who litters, one would first have to place him/her in a category of being a criminal. There are laws against this action which call for severe penalties. In some areas of the country, fines are levied from \$100 to \$1,000. Our local fine is \$500 but none of these fines seem to be effective. From my travels, I haven't seen any less contamination in areas of large fines when compared with areas of small fines.

Therefore, I propose that we try a new approach. That approach is that the criminal be required to singlehandedly clear a major section of roadway (like one mile) wearing the long forgotten black and white striped garb of the roadgang criminal. Such clean-up should be given great public notice and be accompanied by signs erected at both ends of the selected roadway identifying the culprit, by name, as a SLOB.

*But, did you know that Citrus County's Adopt-A-Highway program predates the state's program? That's right. Our governing body had the vision and wisdom to study the Texas program, modifying it as necessary to fit our local needs, and implement it in May of this year.*

The cost for administering such a program of restitution would be cheap and could even be borne by the litterer. Not a single jail cell would be required. Judge Graham may find such a suggestion noteworthy. The question is whether such treatment of these criminals would be considered cruel and unusual punishment. I think not. It is important that the black and white striped suit be included to distinguish the criminal from the upright citizen who volunteers his energy, sweat and time to the betterment of our roads. And it is also important to recognize them as the slobs that they are so that they would not be confused with those who labor to pick up their droppings.

In stark contrast to the neaderthal, pea-brained slobs who don't deserve to use our public roads, the civic-minded, giving and caring individuals who are part of the Adopt-A-Highway deserve our wholehearted thanks and appreciation. They aren't out there on the roadway for your thanks, though. They are there because of the way they feel and because of what makes up their character. They give their community service freely and their only complaint is towards those who do not appreciate the cleanliness and beauty. So, if you pass a crew of folks bent over into the grass, grubbing in the garbage left by some clod, give them a toot of the horn as you pass to show your thanks; but don't expect them to stand and wave. They are probably already uncomfortable from stuning and bending; but

Please see **ROAD**, Page 6C



Many of the winners in the Floral City Garden Club Landscape Improvement Awards campaign were present on Nov. 10 to receive their awards for beautifying their property. Pictured front row, left: Frieda Worsham, Bank of Inverness; Linda Bayliff, First Florida Bank; Peggy Sparacino, Produce and Florist Shop and Marcia Beasley, chairman for the project. Second row, left; William Webber, Clarence and Terri LaCasse; Carl and Delane Batten and son Paul. Third row, left: Gene and Corinne Coleman, Jan Saylor, Minnie Minnis, Mildred Braden and Helen Bateman. Back row, left; Pat Howard, Myra Eckstein, Morris and Kitty Coleman, Louann Morgan and Mildred Evans.

Anne Smith/The Chronicle

## Garden Club presents beautification awards

By Anne Smith  
Chronicle writer

The Floral City Garden Club presented on Nov. 10 Landscape Improvement Awards to residents and businesses in the immediate Floral City area for their efforts to beautify the city.

The Landscape Improvement Awards Committee, chaired by Marcia Beasley, worked to complete this project. Assisting her were Louisa Dietrick, Ruth Kenny, Marie Minnis, Tom Meyers and Kathy Mueller.

The awards program was limited to the downtown, Orange Avenue, Duval Island, Singing Forest and Devil's Neck areas.

Twenty six residents and four businesses were chosen for this honor. These included: Bank of Inverness, Betty's Beauty Shop, First Federal Bank and Sparacino's Produce and Florist.

On Orange Ave. the winners included: Shirley Beaumont, Earl and Verla Echstenkamper, Richard and Vada Ewing, William and Janet Webber, Gregory and Sandra Cross and Clarence and Terri LaCasse.

Duval Island Canal side winners were Gene and Corinne Coleman, Mary Erickson, Chet and Betty Glover and Leo and Ruth Vertovsek.

On Duval Island lakeside, winners were Louisa and Dorothy Sherrouse, Ralph and Dorothy Haynes, Walter and Ruth Beebe, Paul and Jan Saylor, Hank and Mildred Bra-

den and Harrie and Helen Bateman.

Singing Forest residents chosen included: Pat Howard, Carl and Myra Eckstein, Douglas and Mildred Reed and Simon and Kay Genster.

In the Devil's Neck area, Morris and Kitty Coleman, Charles and Louann Morgan and Mildred Evans were chosen.

Ms. Beasley stated, "The committee recognizes the fact that many others in this area have maintained their yards to high standards over the years and that yards in new homes are being well maintained."

The Garden Club commended all residents and businesses who maintain and improve their landscape.

## Tree trimming work is appreciated

To Christopher W. Chinault, County Administrator:

Tree trimming on Orange Avenue (Canopy Tree Area) was completed on Oct. 10, 1989. I am sure that you will agree not only has a dangerous situation been corrected, but a very scenic section of our county road has been made even more beautiful.

I would like to extend my personal thanks to the following:

Florida Power (Mike Harbour) which once again exhibited their community involvement by furnishing the tree trimming experts to physically do the work — at no cost to Citrus County.

Tony Wallace, Forester, who not only established the work plan, but paid periodic visits to oversee and offer fundamental needed advice.

Commissioner Cohen, who sponsored the task and communicated with the local citizens to answer questions and explain the operation in a timely manner, thus quieting a lot of undesired criticism.

The Chronicle, St. Petersburg Times, Tampa Tribune, and Ocala Star Banner for press coverage that informed the citizens of our intent.

To the County Road Maintenance Division employees who did their work quietly and efficiently to counteract any criticism.

To the Floral City Garden Club who, though concerned at first, lent the support needed to correct deficiencies on this highway.

Last, but not least, to the Board of County Commissioners who supported our efforts on this project which could have been, if handled wrong, very unpopular.

To complete this type of project without criticism is almost impossible. Only with the type of support mentioned above and total communication can this be accomplished. This project has been a high priority with this Department for

some time, and I am pleased to see the fulfillment of that desire.

It is our intent to remove the three trees that are beyond salvaging, and to not only replace these three trees, but fill some of the existing voids in this pristine location (19 in all).

Your support in this effort has been appreciated, and I wish to thank you personally.

Gerald O. Clark, Director  
Department of Public Works

7 Nov 1989  
■ **Garden Club:** The Floral Garden Club will meet at 12:30 today at the community building, Orange Avenue. Tim Johnston, Agricultural Agent from the County Extension Service will be the guest speaker.

## Floral City groups adopt roads for beautification

Members of the Floral City Garden Club, Floral City Women's Club, the Civic Association and "friends" will join forces at 9 a.m. on Nov. 13 to assist the county, local merchants and property owners in a cleanup program for Floral City.

Establishment by the county of the Adopt-A-Road program has encouraged residents to band together in the cleanup and beautification of Historic Floral City's main arteries. The Floral City Garden Club will adopt Orange Avenue from U.S. 41 to Trail's End Road. The Floral City Women's Club has adopted Old Floral City Road from Orange Avenue to Gobbler Drive. The Civic Association and "friends" (others who are not members of these clubs) are interested also in the project to beautify "downtown" Floral City. Their roads are still to be designated.

All individuals participating in

the Adopt-A-Road program must attend an instructional session prior to Monday, Nov. 13. The instructional session will be held on Tuesday, Nov. 7, at 2 p.m. at the Community Center on Orange Avenue next to the Fire Station.

Individuals not able to attend should arrive at 8:15 a.m. on Nov. 13 for a makeup session.

As I've discussed the Adopt-A-Highway concept with people, I'm often asked what type of organization would be a candidate for taking on the responsibility. Clearly, every organization has a purpose which stand only a little removed from the desire to live in a clean environment. In some cases, the desire is expressed as a moral commitment as in the case of religious organizations. In others, the business benefits provide the motivation as most business men and women recognize the value of clean roadways to their enterprise. Still others are drawn by an innate desire to better their community.

ion counties.

The local club is striving to "put the flora back in Floral City." It sponsors a contest for outstanding local home garden, plants gardens in public places, such as the school and post office, and works with county commissioners, the Sumter Electric Co. and other utilities to maintain correct tree pruning and other roadside improvements.

### Garden Club activities

At a recent Federated Flower Clubs district meeting, the Floral Garden Club was honored to have member Marcia Beasley selected as district chairwoman of the roadside beautification program. The district covers all of Citrus and Mar-

The club meets at 1 p.m. the second Friday of the month in the Floral City Community Building on Orange Avenue. Anyone interested in gardening is invited to the next meeting Sept. 8, at the end of the summer recess.

# Writer looks at Citrus 50 years ago

Michael Ballard

## Citrus Heritage



The president of the University of Florida in 1939, John J. Tigert, said "Florida, the southernmost state, is frequently referred to as the last American frontier."

Tigert was writing the forward to the Federal Writers' Project on Florida, which looked at the history and attractions of the state's communities. The Writers' Project was a federally funded division of the Works Progress Administration (WPA) and employed numerous writers during the Great Depression of the 1930s.

The Writers' Project guide to

Florida was released in 1939. Its employees toured the state, writing of what they saw.

In that year, Citrus County had a population of approximately 5,800. Its largest city was Inverness, with a population of 1,215.

The railroad was the major means of travel for any long distance jaunts.

Automobiles were a luxury for many. Air conditioning was unheard of, whether in the home, office or car.

The major roads were hard surfaced, a large bond issue passed 13 years earlier provided the money for the project. The major occupations of the county revolved around the citrus, truck farming and dairy/livestock industries.

Citrus was definitely rural, with

out large-scale housing projects dotting the countryside. Cattle roamed freely. Motorists had to be constantly alert for the wandering animals, with a dozen accidents a year occurring because of cattle on the highways.

Florida City attracted the eyes of the WPA writers who visited the county. It was credited with a population of 300, and was described as the "headquarters for sportsmen attracted to the nearby lakes and hunting grounds." Florida City was picturequely seen as a village under a canopy of giant oaks.

The road south of Floral City was a "succession of sweeping curves" through a region of low hills. The land was dotted with swamps, home to herds of herons and red winged blackbirds.

Crystal River received a short review in the Writers' Project. To reach the city of 800, a driver on the writers' tour had to go Inverness on State 22 to Crystal River, State 22 to now State Road 44.

It was described as a town of steady growth, dependent on the fish, oyster and lumber industries of the region. The sport of fishing, which attracts so many to the area, also was mentioned, with Crystal River being a town where both salt and fresh-water fishing was available.

The Writers' Project often used locations to inform its readers of sights to see, rather than street names or road titles. Three blocks "south of the business district ... is Sylvan Glen Park," with a "golf lodge and swimming pool." Also, "a

stone's throw from the city docks is Buzzard's Roost," described as an island popular with fishing parties.

Crystal River was noted for red cedar, which grew in the area and was considered by the Writers' Project as the finest in Florida. Cedar planks were used by pencil manufacturers, cabinet work and furniture.

Homosassa Springs was the last Citrus County community mentioned by the Writers' Project. It was listed with a population of 50.

The Homosassa natural springs, with their flow of 70,000 gallons a minute, also was mentioned.

The Federal Writers' Project of 1939 provides a valuable glance at the major communities and lifestyles of 50 years ago. It is a record of our Citrus Heritage.

## Feeding the nation

In the late 1800s, vegetables and fruits produced by Floral City were shipped by steamer to Lake Park, where the produce was loaded on to trains.

## Mighty Floral City

In 1888 Floral City was Citrus County's largest community. Its population of 300 was twice as large as Miami's.

# 1940 Christmas prices cheap

In 1940 World War II was under way, although the United States had not entered it. It was a presidential election year, and Franklin D. Roosevelt would win the presidency for the third time, defeating Republican Wendell Wilkie at the polls.

It was the end of the Great Depression of the 1930s and the beginning of an even more turbulent age.

Citrus County's population had increased by 300 during the decade of the 1930s, with the 1940 census reporting a total of 5,844 residents. Still very rural, Citrus County depended on agriculture, cattle ranching and tourism for its major sources of revenue.

The average income during 1940 was under \$30 a week for the average worker. Teachers' salaries, a part of the public domain, reflected the income of the time. The superintendent of schools in Citrus County, I.R. Nolan, earned \$225 a month. Teachers, depending on race and years in service, earned from \$105 to \$155 a month, while secretaries earned an even \$100 a month, or \$25 a week. The schools were on a

Michael  
Ballard

Citrus  
Heritage



seven-month schedule at the time.

Prices, of course, were based on the income of the time.

Coca-Cola was 5 cents for a 10-ounce bottle. Because there was a local Coca-Cola bottling plant, it was the soft drink of choice in Citrus County. Pepsi did give Coke a run for its money, however. It introduced the 12-ounce bottle for a nickel, advertising, "Step Out ... be gay ... the Pepsi Cola Way."

Gasoline was an astounding 18 cents a gallon for "regular" in 1940, while ethyl cost the motorist 20 cents a gallon. A quarter would buy a quart of oil and garages sold a new tire for \$7.98 ... and the old tire.

A New Master 85 Business Coupe sold for \$659 at Boswell Brothers

Chevrolet in Inverness. The advertisement for the Chevrolet was appealing: "Eye it — Try it — Buy it!"

Drivers licenses were renewed yearly for 50 cents.

Electricity was still not available to all of Citrus County. All of the county would not be "on line" until 1948. Air conditioning had not been introduced.

The minimum charge for electricity was a dollar a month. The actual rate for low-usage houses and businesses was 7 cents per kilowatt-hour a month.

There were several hundred telephones in Citrus County by 1940. The charge to have the Florida Telephone Co. hook up a new telephone was a dollar. The average charge for the telephone was a mere 7 cents a day. Long-distance calls were still placed through the operator.

The Christmas shopping bill for the nation averaged \$62 per family, which was slightly higher than the previous year. Parents could buy solid steel-frame tricycles for their children for \$4.95, or a 2-foot-tall doll for \$1.98.

The family might have treated itself to a new radio for a Christmas present. The stations were AM, and Citrus County received two. The cost for a four-tube, battery-supplemented table model AM radio was \$19.95. It would occupy one end of the breakfast table. The Silvertone Commentator, with a 4-inch speaker, sold for \$9.95.

1940 was a very special time in our Citrus Heritage. The county was optimistic about the future, and caring about the present. Lanier's Drug store offered a special Christmas dinner that year, 40 cents for a full-course meal.

## Tree ordinance isn't amended

By STEVE ORLANDO  
Tribune Staff Writer

LECANTO — The Citrus County Planning Commission never quite got out of the woods Thursday night during its workshop on a proposed new tree protection ordinance.

Confusion over no fewer than three different versions of the ordinance prompted the commission to end the meeting after 2½ hours of discussion.

Before it adjourned, however, the commission voted to have the county zoning department look into amending the current ordinance. The amendment would provide for a temporary moratorium on massive land clearing on non-residential zoned land by requiring a permit until a new ordinance is in place.

Board member George Rusaw suggested the move, saying the

main problem with the existing ordinance is that it fails to require a permit.

The Planning Commission is working on scheduling a public hearing on the proposed amendment for either Jan. 4 or Jan. 11, but board member Marion Knudsen said that's not soon enough.

"If we don't sit and do something, there's not going to be anything left to do it for," Knudsen said. "We've got to put the fear of God into some of these people" who clear-cut property of trees.

Chairman Rob Tessmer said Friday he realizes that amending the current ordinance could take time, but it's the best thing to do for now.

"The (commercial) landowners are obviously nervous as to what's

See CONFUSION, Page 2

The Tampa Tribune, Saturday, December 16, 1989

## Confusion prompts meeting's end

### ■ From Page 1

going on," he said. "But we need to have a temporary solution to the problem so they don't start clear-cutting all up and down (U.S. highways) 19 and 41."

Thursday's workshop originally was set for discussion on two versions of the ordinance — one prepared by an appointed committee and one put together by the zoning department staff.

Shortly after he began his presentation, zoning department environmental specialist George

Miskimen said the two versions handed out to the audience were mislabeled.

The staff version was marked as the committee version and vice versa, he said.

Moments later, though, Miskimen told Tessmer the two ordinances actually were both staff versions. After a short break, copies of the committee version were distributed to the audience and the board.

When the discussion resumed, Miskimen and Tessmer were unable to refer to the same pages because while Tessmer said he wanted to

work from the committee version, Miskimen repeatedly referred to the staff's offering.

Both versions are essentially the same. The biggest difference is that the staff ordinance exempts residential lots from enforcement — something the tree committee didn't want.

Both versions give exemptions to agricultural and forestry operations, electrical utility facilities and licensed plant or tree nurseries.

They also protect tree-lined or canopied streets, like Orange Avenue in Floral City.



Dec 1989

# Landscape awards presented

At the Floral Garden Club's last meeting, Landscape Improvement Awards were presented to residents and businesses in the immediate area.

During past president Beverly Clark's term of office, the club discussed ways to improve the overall appearance of the Floral City area. They believe that the first step should be recognition of individuals in the community who had demonstrated an interest by improving their own properties.

A Landscape Improvement Awards committee was appointed with Norma Bradley as chairman and members Leona Dietrick, Ruth Kenny, Marie Morris, Ted Meyers and Kathy Mueller. To initiate the program, the area was limited to the downtown area of Floral City, Orange Avenue, Duval Island, Singing Forest and Devil's Neck areas.

Those who were known to have improved their areas during the past year or two, were selected for awards. Four businesses and 26 residents received certificates: downtown's Betty's Beauty Salon, Bank of Government, Frieda Wernham, Rpt., First Florida bank, Linda Bayliff, Rpt., at Spaulding's Pro-

Mary Zaccardi

Floral City



duce and Florist; Orange Avenue's Shirley Beasmore, Earl and Verla Eckstein-Kampfer, Richard and Vada Ewing, William and Janet Webber, Gregory and Sandra Cross, Clarence and Terri LaCasse, and DeLene and Charla Basser, Duval Island's, on the canal side, Gene and Carlene Coleman, Mary Ericson, Cheri and Betty Glawer and Lee and Ruth Vernevek; Duval Island's, on the lake side, Leona and Beverly Sherwood, Ralph and Dorothy Baynes, Walter and Ruth Beebe, Paul and Jan Saylor, Bank and Winnie Winnie, Bernice and Evelyn Canbie Jr., Ralph and Mildred Braden and Harris and Helen Bateman; Singing Forest's Pat Howard, Carl and Myra Eckstein, Douglas and Mildred Reed and Simon and Kay Gerstner; Devil's Neck's Morris and Kitty Cole-

man, Charles and Louann Morgan and Mildred Evans.

The committee recognizes the fact that many others in the community have maintained their yards at high standards over the years and that yards of new homes are being well maintained. The Floral Garden would like to take this opportunity to commend all residents and businesses who are maintaining their landscapes.

12/1/89  
on display  
at local library

Two other displays are at Floral City Library during the month of December. One is by Barbara Littlefield and is the monthly floral arrangement courtesy of the Floral City Garden Club. Using lock, luffa, sea grape leaves, and bright accessories unique to the season, Ms. Littlefield has created a festive holiday arrangement.

## Floral City appreciates road work

TO THE EDITOR:  
Dear Gerald Clark  
Public Works Director  
Citrus County

The members of the Floral Garden Club of Floral City wish to extend our note of appreciation to your department for placing the crushed stone in the parking area of the Floral City Community Center and Library area.

The stone greatly improves the overall appearance of the area, allows the rain to soak in without run-off and provides a safe foundation for parking.

We also appreciate the attention you have taken to preserve our historic 100-year old live oaks along Orange Avenue.

Our club has pledged to work

with the community to improve its appearance while preserving its historic aspects. Therefore, we sincerely appreciate the work your department has accomplished in our community.

Dorothy Clark  
Marcia Beasley  
Co-Chairmen Civic Development  
Floral Garden Club

## 1987 Join Floral City in community cleanup

Re: Letter by Jean Kelly, Floral City on Saturday, Oct. 21 and Letter by Barbara Harvey, Floral City, on Sunday, Oct. 22.

You have both addressed the need for clean-up of the roadways of Citrus County and Floral City so that residents can take pride in their appearance.

Many people in the Floral City area feel as you do. Therefore, on Monday, Nov. 13 at 9 a.m. a joint community effort will begin on just such a project.

At that time members of the Floral Garden Club, Floral Women's Club, Civic Association and "friends" will meet to Adopt-A-Road and help local merchants clean up our historic Floral City.

We challenge all of Floral City to come out and pick up, clean up and show your "pride." "Miss Manners lady" she once was!

For more information call Dot Clark, 344-2339.

Dot Clark  
Marcia Beasley  
Co-chairmen, Civic Development  
Floral Garden Club

Dec. 1989

# Garden club sets holiday luncheon

The Floral Garden Club will hold its annual Christmas salad luncheon in the Singing Forest Recreation Hall on Dec. 8 at 12:30 p.m. A short business meeting will precede the program on "Christmas Decorations" presented by Marie Jones and Marie Morris.

Mrs. Howard V. Woods, Director of District V, Federated Garden Clubs of Florida, will be an honored guest. Other invited guests are the "friends" who are helping with the Club's Adopt-A-Highway program. Members will hold their traditional plant exchange.

Members are asked also to bring a dish to contribute to the luncheon and their own table service.

For the information of guests and new members, to reach Singing Forest Recreation Hall from Old Floral City Road, turn east on Evergreen Loop into the Park. At the intersection there is a brown building. The Recreation Hall is located at with parking on the right.







Our 1989 Christmas party held at Seizing Forest. Marie Jones tells how she created and made the table decoration for our party.





### Girls visit camp

The Floral City Garden Club recently sponsored two girls from the Junior Girl Scout Troop 335 to a summer camp. Jolene Weaver and Christina Duke enjoyed a week at Camp Wekiva in Florida. The girls attended the Garden Club's first meeting and told the members about the great time that they had. They joined in on most of the camp activities and they especially enjoyed doing the arts and crafts. Each girl went home with three or four articles of the items they made. The Garden Club tries to send at least two girls to camp each year.

Nov 28, 1987



FLORAL CITY SCHOOL

# V.I.B. Award

(Very Important Bullfrog)

The Floral City Garden Club

is awarded this certificate of recognition for outstanding contribution  
to the children of Floral City Elementary School

This 11th day of December 19 87

Shelia Miller

Advisory Council President

*Nick Brown*  
Principal

**Excellence**