

DISTRICT V

FLORIDA FEDERATION OF GARDEN CLUBS, INC.

Application for District V Awards

Date of Application April 29, 1980 Award to be presented in 19 80  
at Fall Meeting

Name of Award PUBLIC PLANTING AWARD No. E

Applicant's Name: (Club, or Club and Circle, or Club and Individual)

Floral Garden Club (Mrs. Marie Jones Awards Ch.)

Address P. O. BOX 745 Floral City, Fla. 32636

Title and Description of Project or Achievement: Landscaping and  
planting at entrance of new County Park in Floral City, Fla. by Floral  
Garden Club.

Signature: Club or Circle President Marie L. Morris

Address P.O. Box 504 Floral City, Fla

By JUNE 15, 1980: Return duplicate copy, completely filled out, to

District V Awards Chairman: Mrs. A. L. Horning

P.O. Box 977

Homosassa Springs, Fla. 32647

Fasten original copy in Book of Evidence and send, postmarked on or before SEPTEMBER 1, 19 80, (or ~~may be handed personally at the September Presidents' Organization meeting~~) to

District V Director: Mrs. James Rightmire

275 S.W. 73rd St. Road

Ocala, Fla. 32671

10/19/78

NAME: FLORAL GARDEN CLUB  
ADDRESS: FLORAL CITY, FLORIDA 32636  
DISTRICT: NUMBER 5  
NUMBER E 5 - A  
AWARD: CLASS E - PUBLIC PLANTING  
MEMBERS: 40

TABLE OF CONTENTS

1. SUMMARY
2. ACCOMPLISHMENTS
3. MEMBERSHIP INVOLVEMENT
4. PUBLICITY
5. BEFORE AND AFTER PHOTOGRAPHS
6. SUPPORTING EVIDENCE
7. CREDIT FOR MATERIALS

## SUMMARY

### HISTORY OF ACTIVITY

- 1977: PLANNING GROUP FORMED TO PLAN FOR FUTURE USE OF CITRUS COUNTY AREAS. ELEANOR BONIFIELD A FLORAL GARDEN CLUB MEMBER WAS ON THE PARKS AND OPEN SPACES GROUP.
- 1978: APPROVAL FOR PURCHASE OF 40 ACRES OF LAND 3 MILES SOUTH OF FLORAL CITY, FLORIDA, WHICH HAD BEEN A COUNTY DUMP AND PASTURE LAND, WAS GRANTED BY THE COUNTY COMMISSIONERS.
- 1979: THE PURCHASE OF THE LAND WAS COMPLETED AND MONEY WAS APPROPRIATED FOR NEEDED FILL, GENERAL CLEAN UP, AND THE ELIMINATION OF HAZARDS.
- 1980: THE FLORAL GARDEN CLUB WAS ASKED TO DRAW PLANS FOR LANDSCAPING THE ENTRANCE TO THE PARK. MEMBERS, ELEANOR BONIFIELD AND FLORENCE KATROBA SUBMITTED DRAWINGS. DUE TO HAZARDOUS CONDITIONS THE PARK ENTRANCE WAS MOVED TO A NEW LOCATION, SO NEW DRAWINGS WERE SUBMITTED AND APPROVED. AFTER SEVERAL DELAYS, DUE TO WATER POLLUTION AND PUMP PROBLEMS, THE WORD WAS GO FOR MAY 17, 1980 DEDICATION. IT WAS NOW MAY 2, 1980.

## ACCOMPLISHMENTS

ON MAY 17, 1980 THE PARK OPENED WITH LILIES, GERANIUMS, MARIGOLDS, PETUNIAS, HYDRANGEAS, SALVIA AND RADICANS BLOOMING AMID THE CONTRAST OF FOLIAGE. THIS WAS ACCOMPLISHED BY THE CO-OPERATION OF THE PARK DISTRICT GREEN THUMB DIVISION, WHO FURNISHED THE MANUAL LABOR, THE GARDEN CLUB MEMBERS WHO FURNISHED PLANT MATERIAL AND ELEANOR BONIFIELD ALONG WITH FLORENCE KATROBA WHO SUPERVISED THE PLANT PLACEMENT ACCORDING TO THE APPROVED PLANS.

MEMBERS INVOLVED

GARDEN CLUB: ELEANOR BONIFIELD AND FLORENCE KATROBA, PLANNING AND SUPERVISION.

EMMA SPECKMAN, EDNA JOHNSON, AND LYDIA STEVES WHO DONATED PLANTS AND SHRUBS.

GARDEN CLUB MEMBERSHIP WHO APPROVED THE PURCHASE OF PLANT MATERIALS NEEDED.

PARTICIPATION OF MORE GARDEN CLUB MEMBERS WAS IMPEDED BY THE PROBLEMS ENCOUNTERED IN STARTING DATE OF ACTUAL PLANTING WHICH CONFLICTED WITH PRIOR COMMITMENTS.

YOUTH GROUP: KEY TRAINING CENTER-(Gifted Education Center) YOUNG ADULTS WHO SOLD US PLANTS FROM THEIR GREENHOUSE.

COMMISSION: APPROVAL OF PARK DISTRICT GREEN THUMB DIVISION TO USE MACHINERY AND MAN POWER TO PREPARE PLANTING BEDS.

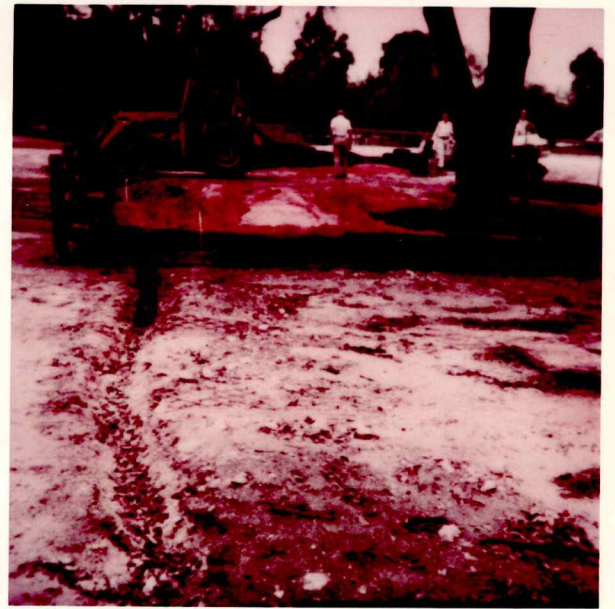
COUNTY: EXTENSION OFFICER WHO DID SOIL TESTING AND CONSERVATION RECOMMENDATIONS.

# Time Out



**PARK OPENING** -- The Floral Park in Floral City will officially open this weekend with a large community celebration. A number of events have been planned at the park opening beginning at 10 a.m. on Saturday, May 17.

Pictured, Mrs. Florence Kotraba and Mrs. Eleanor Bonifield of the Floral City Garden Club arrange the landscaping at the front of the park. The members of the Garden Club have donated the plants for the park.





HISTORY OF BEGINNING OF  
FLORAL PARK

In 1977 a Comprehensive Planning group was formed of local citizens to plan various areas of Citrus County for future use. Input was supplied by the members of each group after inquiry of persons from the areas.

Marge Barker and Eleanor Bonifield were on the Park and Open Spaces group in this venture. Working with the liaison officer for the district and other members of the County Commission (Jerry Steed as Commissioner at the time) purchase of the land (40 acres) which was used as a dump site and a large portion of pasture land, it was 2 years later before any action was taken to make the needed fill, general clean-up and elimination of several hazards. A change of Commissioners came along and Jean Grant was elected. Floral Garden Club had been asked to submit a plan for landscaping the entrance to the park. Florence Kotraba and Eleanor Bonifield submitted plans and the entrance was re-constructed in a different manner than the first. So, back to the drawing board. Finally the Recreation Department headed by John Barnes and with the interest of Commissioner Grant, the Park was on its way. Names were submitted by all clubs in the community and Floral Park was finally chosen. Mr. Scruggs of DOT made the sign of weathered wood and stained the routed letters. Due to various reasons opening date was postponed three times. At last the beds were prepared by using old railroad ties built up 2 deep along all sides filled with clay, fill dirt and peat and tested by Ag agent Art Alston (copy enclosed) we were ready to plant. The Health Department did not pass on the water and then trouble with the pump, so planting was delayed. Finally everything was GO and we were short of Garden Club assistance, due to so many postponements. With the aid of Green Thumb workers the entrance plus was in condition to open with Lilies blooming, Geraniums, Marigold and Petunias and the Hydrangeas with all of the contrast of foliage and the Salvia and a few of the Radicans blooming, it was worth all the effort put forth prior to opening date.

The Canna bed should make a great show of color later and plant material will be added when the blooming season for others is over.

Additional plants donated by members of Floral Garden Club were planted on May 13th with the assistance of Mitch Scruggs and Arnold Trouskey of the Green Thumb group. The plants given by Edna Johnson were .... 2 large Viburnum and 1 variegated Pittosporum.

Lydia Steeves donated 36 Ajuga plants.

Purchase of 5 Shore Junipers to enhance rock placements were made on May 14th by Eleanor Bonifield and planted by both she and Florence Kotraba.

Aloe and Kalnchoe were placed around the large rock in the corner and the crushed stone added to finish that area for the opening.

Two clumps of Pampas Grass were also placed near the fence past the Viburnum and Pittosporum (grass not shown on plan) to eventually hide light pole assembly.

Spineless Cactii (large variety) was placed at the rail fence by the #1 bed to discourage children from crawling beneath at that spot.

Geraniums, marigold and Caladium were placed for color in various areas for the opening day, May 17th, 1980.

Watering each day has been done by employee of Green Thumb, and by Florence Kotraba and Eleanor Bonifield of the Floral Garden Club.

FLORAL PARK ENTRANCE

PLANTS DONATED TO DATE ----- MAY 9, 1980

Florence Kotraba

5 Ligustrum(canned)  
2 pink Azalia (canned)    1 Green Pittosporum (canned)    2 Confederate Jasmine(canned )  
4 Loquat                    "    1 Guava (canned)                    2 Parkinsonia (canned)  
2 Native trees?            "    1 Yucca                                "  
Rooted Dwarf Lantana        3 Cabbage Palms(dug by Green Thumb men)  
2 Pyracanthus                1 lot Ajuga

Emma Speckman

1 lot Daylilies  
3 Stapelia                    Pink Daisies 12                    1 pink Bridal Wreath                    6 Aelegnus  
1 lot Ajuga

Eleanor Bonifield

1 lot Daylilies  
1 " Liriope  
1 " Cannas                    1 Ardesia                    1 lot African Iris                    1 Canary Island Palm  
1 Spineless Yucca            1 lot Ajuga                    Shrimp Plant                    Kalanchoe  
Bed Begonia                    Pampas Grass                    Papyrus                    Wandering Jew(pur.,GR.,Var.)

Floral Garden Club

Marigold 9                    Petunias 100                    Salvia 6                    2 Shore Juniper                    Ajuga 12

Plants from Key Training Center

12 Dwarf Azalia                    20 large type Azalias                    4 Radicans                    4 Ligustrum  
8 Nandina

Edna Johnson

1 ( to be dug)                    1 large Pittosporum  
( Duval Island )                    2 "                    Viburnum

Plants were placed and planted by Florence Kotraba, Eleanor Bonifield and Green Thumbs.

Mulch furnished by DOT was placed by E. Bonifield. More to be added at a later date(pine Chips).  
More Azalias(lge.type and Dwarf)will be planted as soon as available.  
2 spreader type Evergreens will be placed in the area of the sign.  
Large rocks(decortive)will be placed as available w/ proper plantings to enhance.

report made to date above by

Chairman, Civic Beautifi-    Eleanor Bonifield  
cation,

*Eleanor Bonifield*

PLANT MATERIAL LIST

AELEAGNUS	PYROCANTHUS
AFRICAN IRIS	PITTOSPORUM
AJUGA	PARKINSONIA
ARDESIA	PAMPAS GRASS
AZALEAS	PAPYRUS
BEGONIAS	PETUNIAS
BRIDAL WREATH	RADICAN
CABBAGE PALM	STAPELIA
CONFEDERATE JASMINE	SHRIMP PLANT
CANNAS	SALVIA
CANARY ISLAND PALM	SHORE JUNIPER
DAY LILLIES	VIBURNUM
DAISES	WANDERING JEW-Purple, Green, Varigated
GUAVA	YUCCA- Spine and Spineless
KALANCHOE	
LIGUSTRUM	
LOQUAT	
LIRIOPE	
MARIGOLDS	
NANDINA	



CREDITS FOR MATERIAL

FLORENCE KATROBA:	LIGUSTRUM PINK AZALIA LOQUAT DWARF LANTANA PYRACANTHUS PITTOSPORUM	GUAVA YUCCA CABBAGE PALMS AJUGA CONFEDERATE JASMINE PARKINSONIA
EMMA SPECKMAN:	DAYLILIES STAPELIA AJUGA	PINK DAISIES PINK BRIDAL WREATH AELEAGNUS
ELEANOR BONIFIELD:	DAYLILIES LIRIOPE CANNAS SPINELESS YUCCA BEGONIAS ARDESIA AJUGA	PAMPUS GRASS AFRICAN IRIS SHRIMP PLANT PAPYRUS CANARY ISLAND PALM KALANCHOE WANDERING JEW
EDNA JOHNSON:	PITTOSPORUM	VIBURNUM
GARDEN CLUB:	MARIGOLDS SALVIA AJUGA	PETUNIAS SHORE JUNIPER
KEY TRAINING CENTER:	DWARF AZALIAS LARGE TYPE AZALIAS LIGUSTRUM	NANDINA RADICANS
DOT:	MULCH	
PARK DISTRICT:	FERTILIZER FILL DIRT	TOP SOIL PINE CHIPS

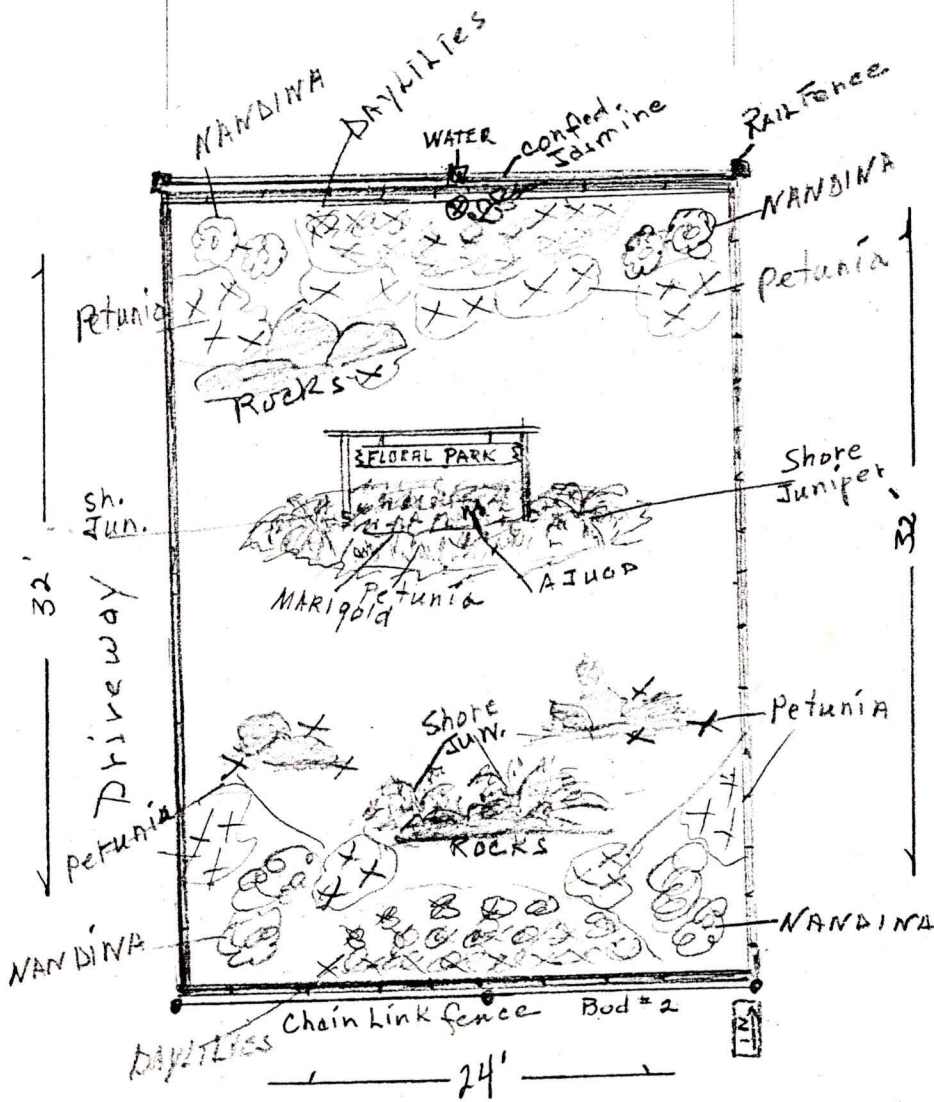


PARKING AREA

Formosa  
Agalea  
Petunia  
RADICANS

Petunia  
RADICANS  
Petunia  
Formosa  
Agalea

Bed #3



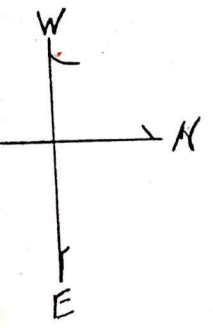
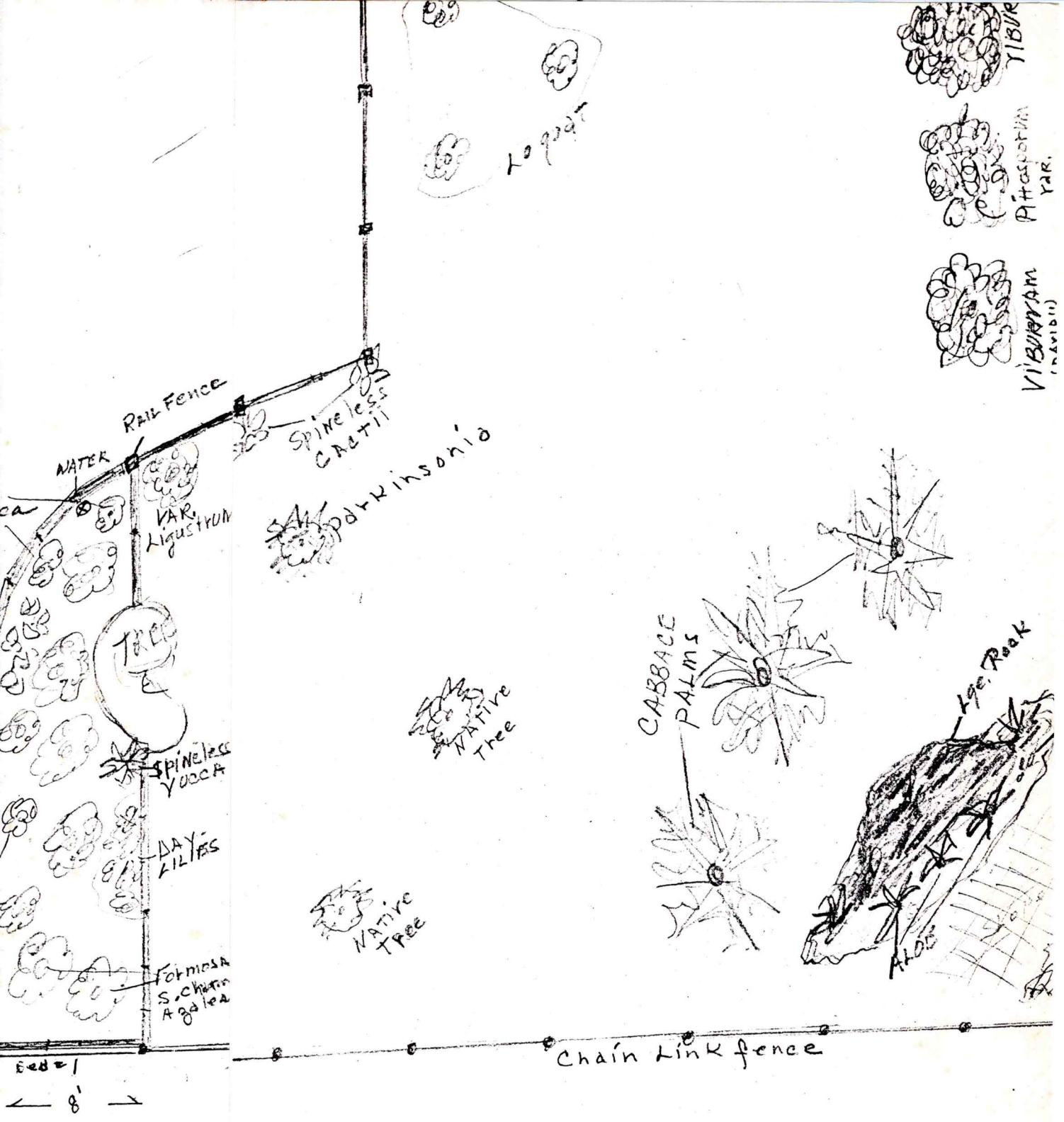
Sw  
Agal

CALADUM

Dubis  
Ag

Exit - ENTRANCE Road to MAIN Hiwa





C  
H  
A  
I  
N  
L  
I  
N  
K  
F  
E  
N  
C  
E

ROCK  
STONE

PAPYRUS

PARK  
ENTRANCE

MAIN  
ROAD