



Deep South Garden Clubs, Inc.
Certificate of Achievement

Presented to

Floral City Garden Club

Award #21ii- Historic Trails

Second Place

2017-2018

E. Anna McCracken

Director, Deep South Garden Clubs, Inc.

Nancy Harris

Chairman, Deep South Garden Clubs, Inc. Awards

DSGC Awards Application 2017-2019



Mail entries to DSGC Awards Chairman (unless otherwise noted in DSGC Awards Rules. **DSGC Website: www.dsregion.org**)
Nancy Harris, 1190 Blake Court, Murfreesboro, TN 37130-9535,
nancyharris1190@gmail.com, 615-890-7929 (h), 615-289-2917 (c)

Award#: 21 **Award Name:** Historic Trails Award **Date:** 1/3/2018 **Name of State:** Florida **State Awards Chairman:** Jennifer Condo

Chair Phone: 386-873-2195 **Email:** jattq3@yahoo.com

[Enter name exactly as it should appear on any award received]

Name of Garden Club/Council: Floral City Garden Club **Number of members in club/council:** 40

Location of Garden Club/Council (city): Floral City **Contact Person:** Susan Metcalfe **Phone:** 352-637-3828

Email: wmetcalf@tampabay.rr.com

NOTE: Application form is limited to three printed pages, front of pages only. (No report covers or binders allowed. No plastic sheets allowed).

Please complete each topic, if applicable. Use numbering as below when completing form.

1. New project: Yes NoX Beginning date:2016 Completion date:2017
2. Brief summary and objectives of project:
3. Involvement of club members, other organizations, etc.:
4. Project expenses and means of funding:
5. Continuing involvement, follow-up, maintenance:
6. Attach or insert photos, digital photos, and/or landscape plan (does not need to be professionally drawn).

2. PROJECT SUMMARY AND OBJECTIVES. The Floral City Garden Club designed and installed a butterfly/bird habitat garden in Floral City adjacent to the Withlacoochee State Trail, part of the Florida State Park System. This 46-mile long walking/biking/horse trail follows the roadbed of an abandoned railroad through eastern Citrus County and continuing south into Hernando and Pasco Counties, with Floral City being located at its midpoint. Original mileposts marking distances from Richmond VA are still in place. The garden was installed with the cooperation of the bicycle shop owner that owns the property. The garden is highly visible to walkers and riders on the trail and is directly accessible from the trail. It is in a spot that trail users often use as a rest stop. Most of the plant material in the garden is native and all plants are listed in the Florida-Friendly Landscaping Guide. The space had previously been used as a rather formal rose garden that had been poorly maintained. The project goal was to create a pleasant space for both wildlife and trail users to enjoy.

3. INVOLVEMENT OF CLUB MEMBERS AND OTHER ORGANIZATIONS. In 2016 club members formed a committee to renew the old garden space with a new theme. We met with the bike shop owner to determine the allowable extent of the new garden, water availability, how to incorporate bike racks, benches and other decorative hardscape into the new design and to assure that the new plantings would be irrigated. The club consulted with the Citrus Chapter of the Native Plant Society on the availability of pollen and nectar producing and host plants for butterflies. They selected plants from the Florida-Friendly Plant Selection Guide (published by the water management districts) to round out the plant materials. A club work day was held to remove the existing plant material and hardscape items, plus clean and paint the reusable hardscape items. The committee coordinated with the shop owner and a mural painter to upgrade the trompe l'oeil background on two building walls that define the edge of the garden. Keep Citrus County Beautiful (KCCB) provided funding for some of the plant material. The club purchased the remaining plant material, mulch, fertilizer, hoses and sprinklers. During a second work day, club members and Boy Scouts from the local troop planted the garden. During the second year, 2017, KCCB provided additional funding for more plants. Club members provided transplants from their gardens both years. During the 2017 season, nine different club members worked on the garden by planning, purchasing, planting, weeding and watering the garden. They spent a total of 50 hours on the project. One community volunteer spent an additional 10 hours on the project.

The plant list for 2016 included: goldenrod, salvia, butterfly milkweed, coreopsis, plumbago, porterweed, black-eyed susan, passionvine, coral honeysuckle, sunshine mimosa, firebush, firecracker bush and canna. Additions in 2017 included, coontie, penta, butterscotch jasmine, bottle brush, hibiscus, ornamental pepper and butterfly bush. Hardscape elements include : old bicycles, trellises, a metal bee sculpture, edging, a bird bath, bike racks, a bench, a path which mimics the trail itself, and the painted background.

4. PROJECT EXPENSES AND MEANS OF FUNDING. The 2017 cash expenses for this garden totaled \$252.75. The club purchased \$60.86 of this value. KCCB purchased plants in the amount of \$173.85. We received donations with a value of \$18.03 for fertilizer and hose nozzles. Donated plants are not included in these values.

2nd
98

5. CONTINUING INVOLVEMENT, FOLLOWUP, MAINTENANCE. One club member is assigned as the chair of the trail-side butterfly garden committee. If watering or minor maintenance (weeding and trimming) is needed, that member completes the project on their own. Otherwise the chair calls a work day and other members assist in maintenance.
6. SUPPLEMENTAL MATERIALS.

Withlacoochee State Trail (foreground) with trail-side butterfly garden against the building in Floral City Florida.



Past President Lona Bassett planting in garden Spring 2017



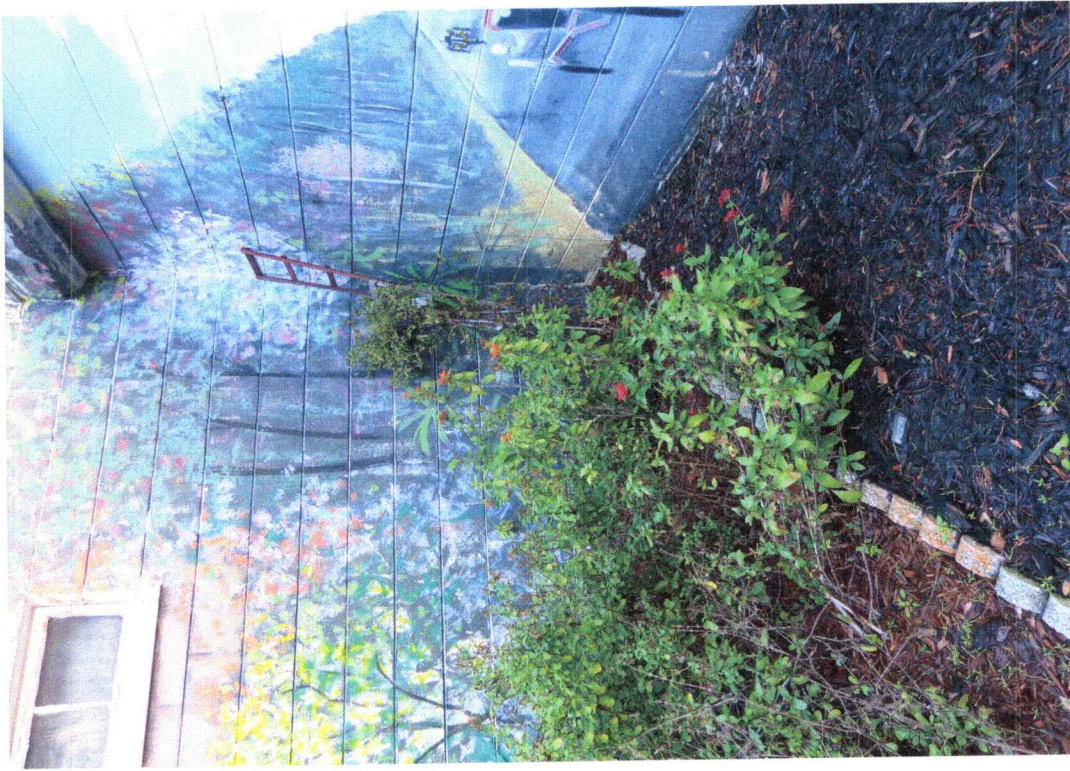
Adding mulch to the butterfly garden in spring 2017.



Birdbath visitor in the shadows on a wintry afternoon.



Sorry, but after a dozen different tries – these photos will not copy in the proper orientation. One shows the butterscotch jasmine along with coral honeysuckle, plumbago, pentas and some salvias in the corner of the garden.



While the other includes butterfly milkweed, vinca, coontie, sago and lirope. The bench and bike racks fit the setting.

